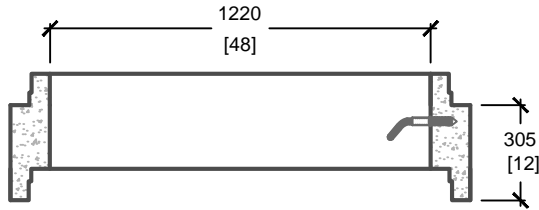


NOTE:
 COMES WITH STANDARD
 686mm [27"] dia. FRAME & COVER
 OPENING BUT IS AVAILABLE WITH
 VARIOUS OPENINGS.

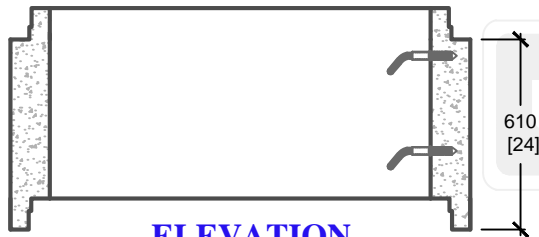
FLAT TOP DETAIL
CODE: S9-FT

**PRODUCT
 CODES**

S-9(12)

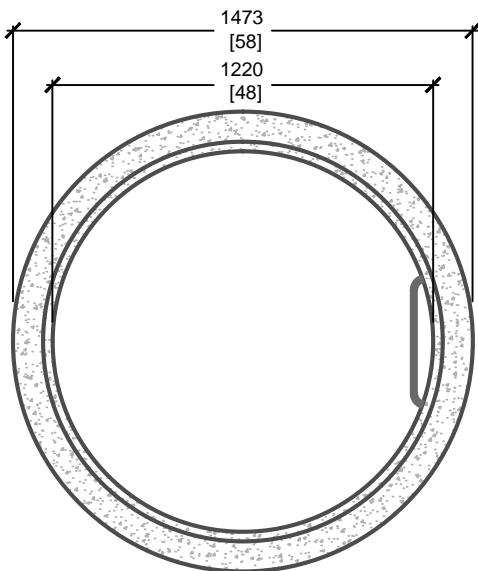
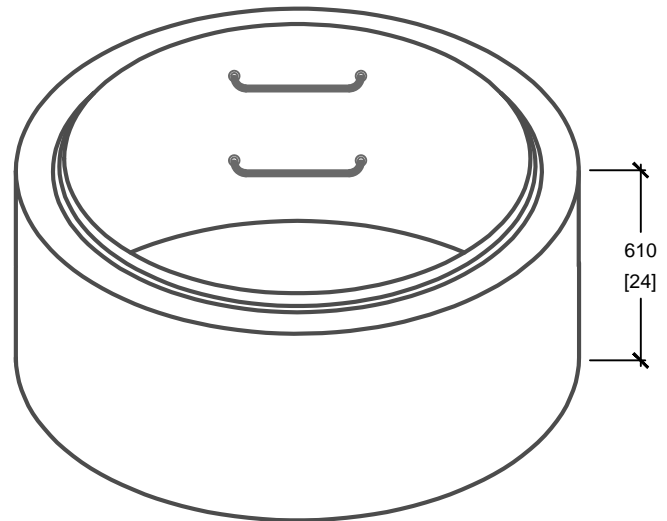
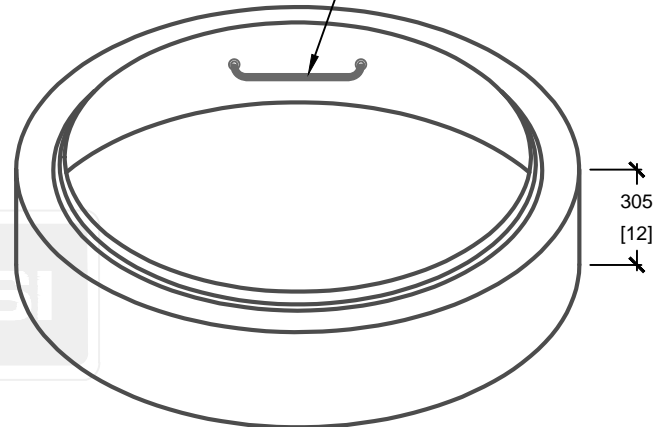


S-9(24)



ELEVATION

**ALUMINUM STEP
 OPSD #405.02**



PLAN VIEW

ISOMETRIC VIEW

mm
 [Inches]
 ALL DIMENSIONS DEFAULT TO MILLIMETRES



UTILITY STRUCTURES INC.

61 BONGARD AVE | OTTAWA, ON | K2E 6V2
 T: 613.225.6398 F: 613.225.1681 TF: 800.267.6466

www.utilitystructures.com

CONSTRUCTION DETAILS:

• ALSO AVAILABLE IN THE FOLLOWING HEIGHTS:
 S-9(36) & S-9(48).

- CSA 23.4-05
- 35 MPa (5000psi) AT 28 DAYS
- STRIPPING STRENGTH: MIN. 20 MPa(2900psi)
- 5-8% AIR ENTRAINED
- EXPOSURE CLASS: C-1
- REINFORCING: STEEL TO CSA CAN A23.1

PRODUCT CODE:

S-9

1220mm SPACER & FLAT TOP

DIMENSIONS:

1220mm DIA. [I.D.]

TOTAL WEIGHT:

VARIES

REVISION DATE:

SEPTEMBER 13, 2017

REV. # 3