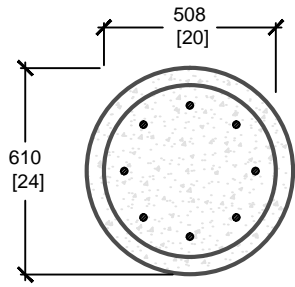
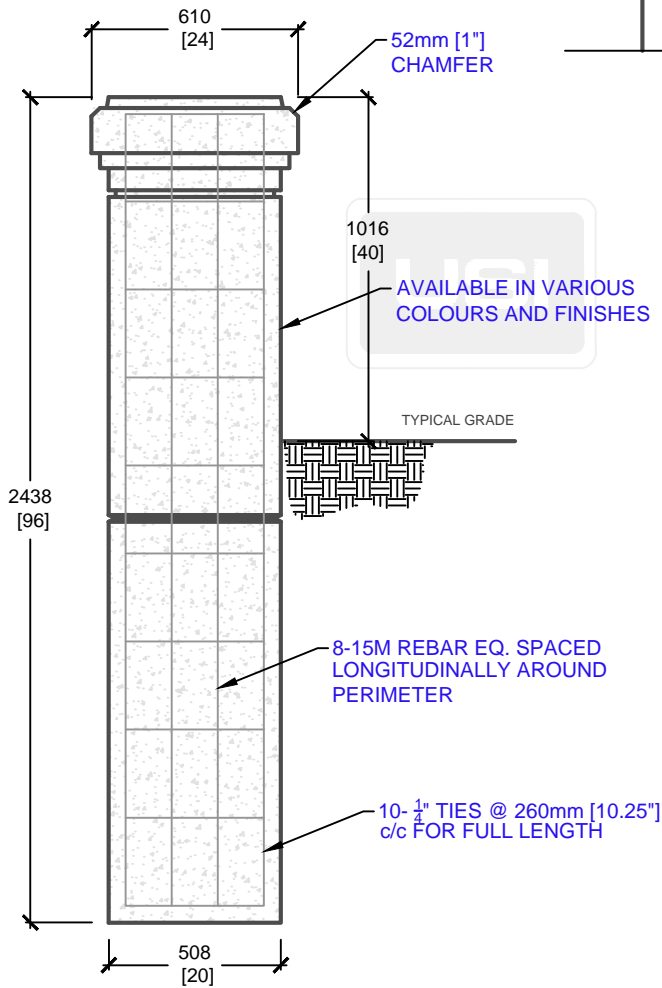
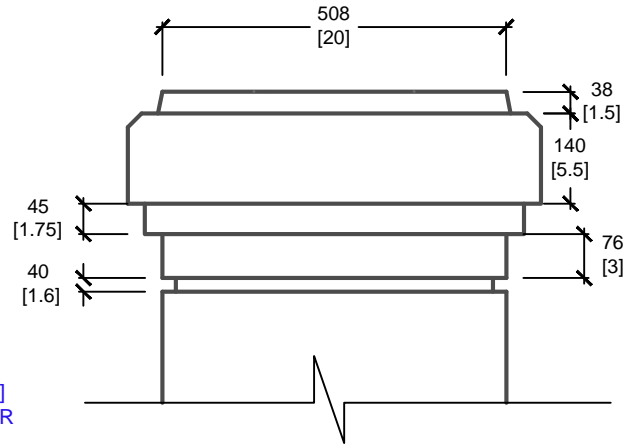


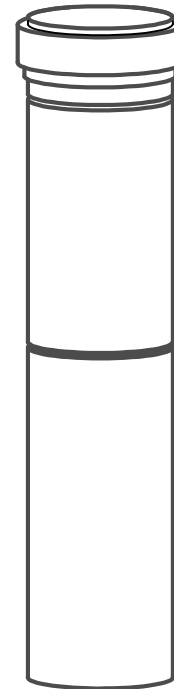
NOTE:
ALSO AVAILABLE IN
VARIOUS COLOURS AND FINISHES



PLAN VIEW



SIDE ELEVATION



ISOMETRIC VIEW

mm
[Inches]
ALL DIMENSIONS DEFAULT TO MILLIMETRES



UTILITY STRUCTURES INC.

61 BONGARD AVE | OTTAWA, ON | K2E 6V2
T: 613.225.6398 F: 613.225.1681 TF: 800.267.6466

www.utilitystructures.com

CONSTRUCTION DETAILS:

- STEEL REINFORCED
- 8-15 LONGITUDINAL REBAR
- 10-1/4" TIES @ 260mm [10.25"] C/C FULL LENGTH

- CSA 23.4-05
- 35 MPa (5000psi) AT 28 DAYS
- STRIPPING STRENGTH: MIN. 20 MPa(2900psi)
- 5-8% AIR ENTRAINED
- EXPOSURE CLASS: C-1
- REINFORCING: STEEL TO CSA CAN A23.1

PRODUCT CODE:

E-94(20)

20" DIA. PROTECTIVE BOLLARD

DIMENSIONS:

2.44m(H) x 508mm DIA.

TOTAL WEIGHT:

2500 kg / 5500 lbs

REVISION DATE:

SEPTEMBER 12, 2017

REV. # 2