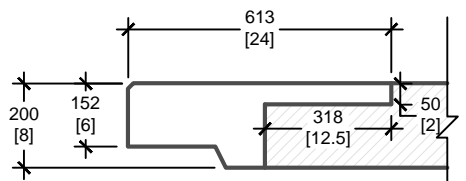
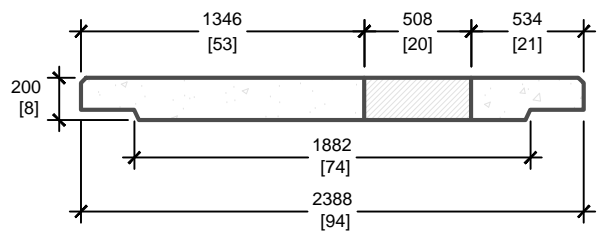


LOAD REQUIREMENTS	
DISTRIBUTED LATERAL LOAD	25 kN/m <sup>2</sup>
TOP SLAB DISTRIBUTED LOAD	60 kN/m <sup>2</sup>
TOP SLAB POINT LOAD	70 kN

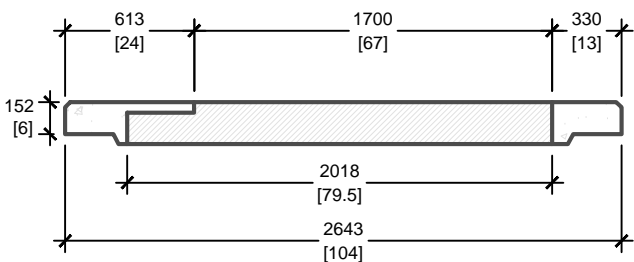
**KNOCKOUT IS NOT STRUCTURAL AND THEREFORE CANNOT TAKE ANY LOAD**



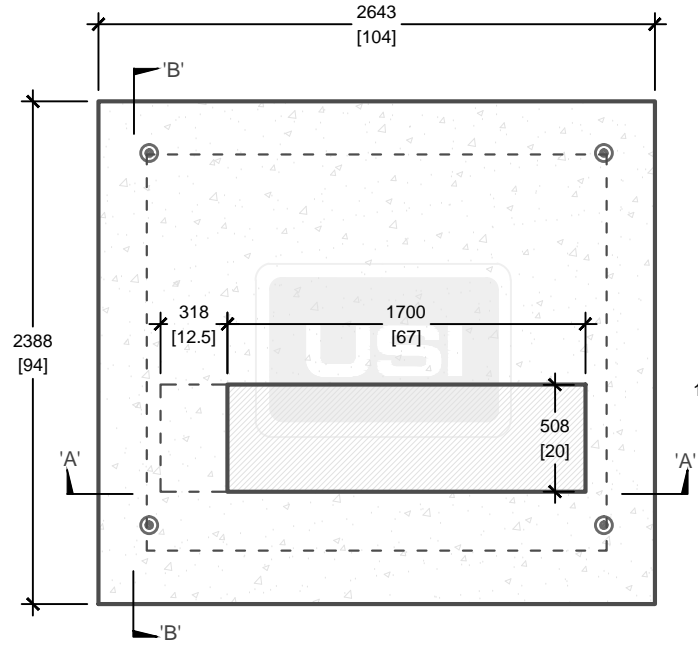
**KNOCKOUT VIEW**



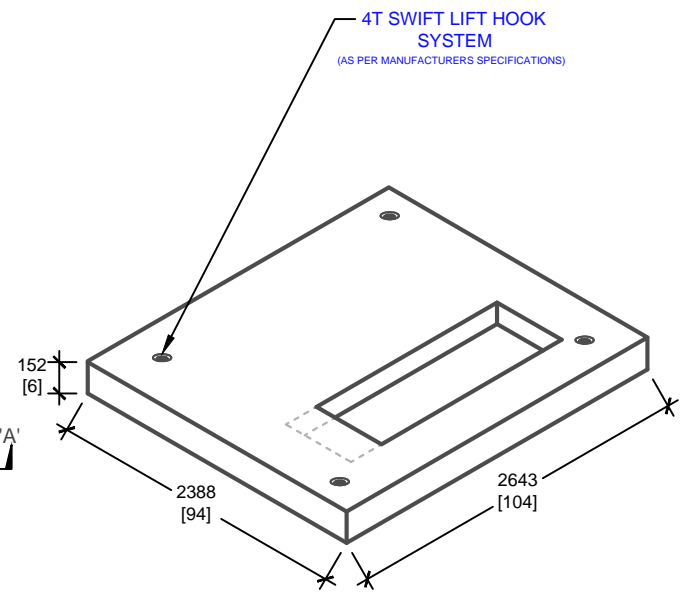
**CROSS SECTION 'B'**



**CROSS SECTION 'A'**



**PLAN VIEW**



**ISOMETRIC VIEW**

mm  
[Inches]  
ALL DIMENSIONS DEFAULT TO MILLIMETRES

- CONSTRUCTION DETAILS:**
- REFERENCE **HYDRO OTTAWA UCS0041**
  - FOR USE WITH **E-812SG** HYDRO OTTAWA SWITCHGEAR MANHOLE
  - SWITCHGEAR MODEL 422, 29KV S&C ELECTRIC
- 
- **CSA 23.4**
- 35 MPa (5000psi) AT 28 DAYS
  - STRIPPING STRENGTH: MIN. 20 MPa(2900psi)
  - 5-8% AIR ENTRAINED
  - EXPOSURE CLASS: C-1
  - REINFORCING: STEEL TO CSA CAN A23.1

- PRODUCT DETAILS:**
- **MULTI-PURPOSE PAD OPENING:**
    - 508mm[20"] x 1700mm[67"]
    - 508mm[20"] x 2018mm[79.5"]
  - **CUSTOM OPTIONS AVAILABLE:**
    - CUSTOM OPENINGS

<b>PRODUCT CODE:</b>	<b>E-812TP</b>
	SWITCHGEAR PAD FOR E-812SG MH
<b>OUTSIDE DIMENSIONS:</b>	<b>0.2m(H) x 2388mm x 2643mm</b>
<b>TOTAL WEIGHT:</b>	<b>2,500 kg / 5,500 lbs</b>
<b>REVISION DATE:</b>	<b>SEPTEMBER 18, 2017</b>
	REV. # 11



**UTILITY STRUCTURES INC.**  
61 BONGARD AVE | OTTAWA, ON | K2E 6V2  
T: 613.225.6398 F: 613.225.1681 TF: 800.267.6466  
[www.utilitystructures.com](http://www.utilitystructures.com)