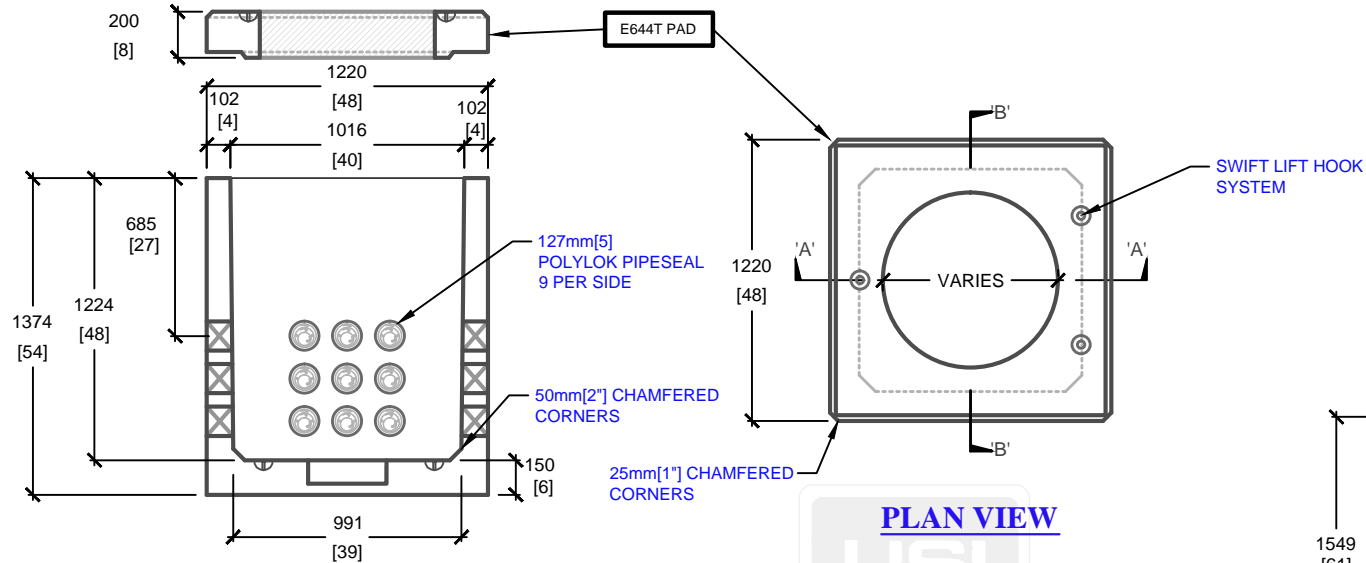
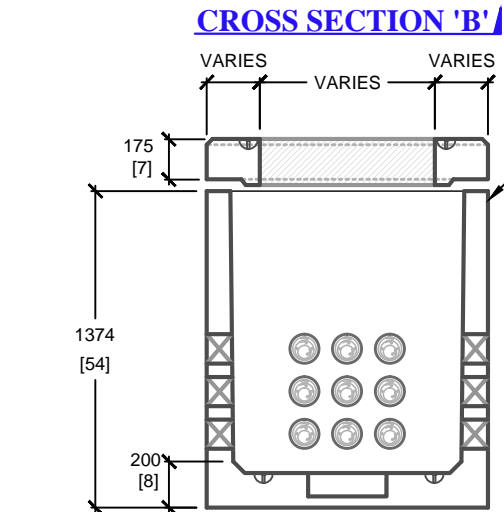


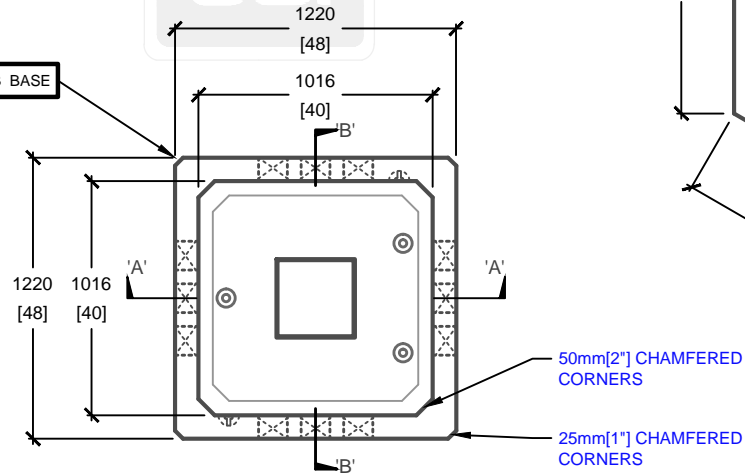
PAD OPENING DETAILS	
PAD TYPE	PAD OPENING SIZE
E644T(27)	686mm[27"]
E644T(30)	762mm[30"]



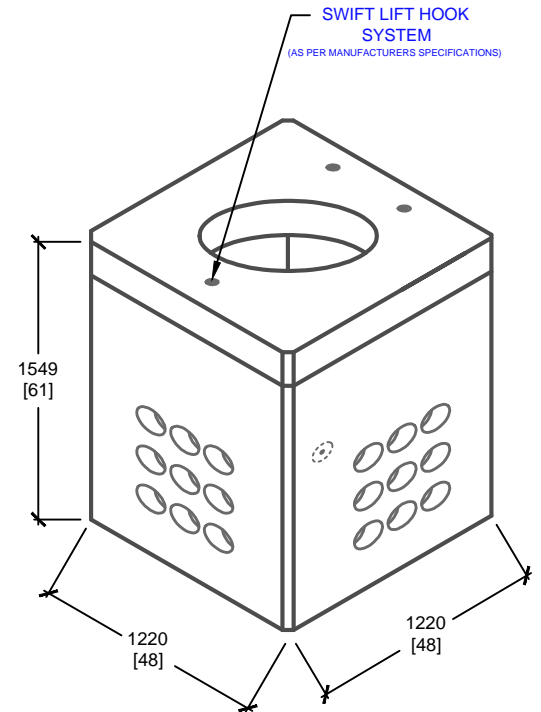
PLAN VIEW



CROSS SECTION 'A'



PLAN VIEW



ISOMETRIC VIEW

mm
[Inches]
ALL DIMENSIONS DEFAULT TO MILLIMETRES



UTILITY STRUCTURES INC.

61 BONGARD AVE | OTTAWA, ON | K2E 6V2
T: 613.225.6398 F: 613.225.1681 TF: 800.267.6466

www.utilitystructures.com

CONSTRUCTION DETAILS:

- DESIGNED TO CL-625-ONT TRUCK LIVE LOADING AS PER **CSA S6-06**
- E-644B & E-644T ASSEMBLED
- **CSA 23.4**
 - 35 MPa (5000psi) AT 28 DAYS
 - STRIPPING STRENGTH: MIN. 20 MPa(2900psi)
 - 5-8% AIR ENTRAINED
 - EXPOSURE CLASS: C-1
- REINFORCING: STEEL TO CSA CAN A23.1

PRODUCT DETAILS:

- (4) 127mm[5"] POLYLOK PIPESEAL WINDOWS (9 POLYLOKS PER WINDOW)
- CLOSED BOTTOM MANHOLE
- **WEIGHT:**
 - E-644B BASE: 1,720kg / 3,785 lbs
 - E-644T PAD: 470kg / 1,035 lbs
- **CUSTOM OPTIONS AVAILABLE:**
 - CUSTOM WINDOWS, OPENINGS, CABLE RACKS, PULLING EYES & MANHOLE HEIGHT

PRODUCT CODE:

E-644MH

4' x 4' ELECTRICAL MANHOLE

OUTSIDE DIMENSIONS:

1.55m(H) X 1220mm x 1220mm

TOTAL WEIGHT:

2,190 kg / 4,820 lbs

REVISION DATE:

November 14, 2019

REV. # 5