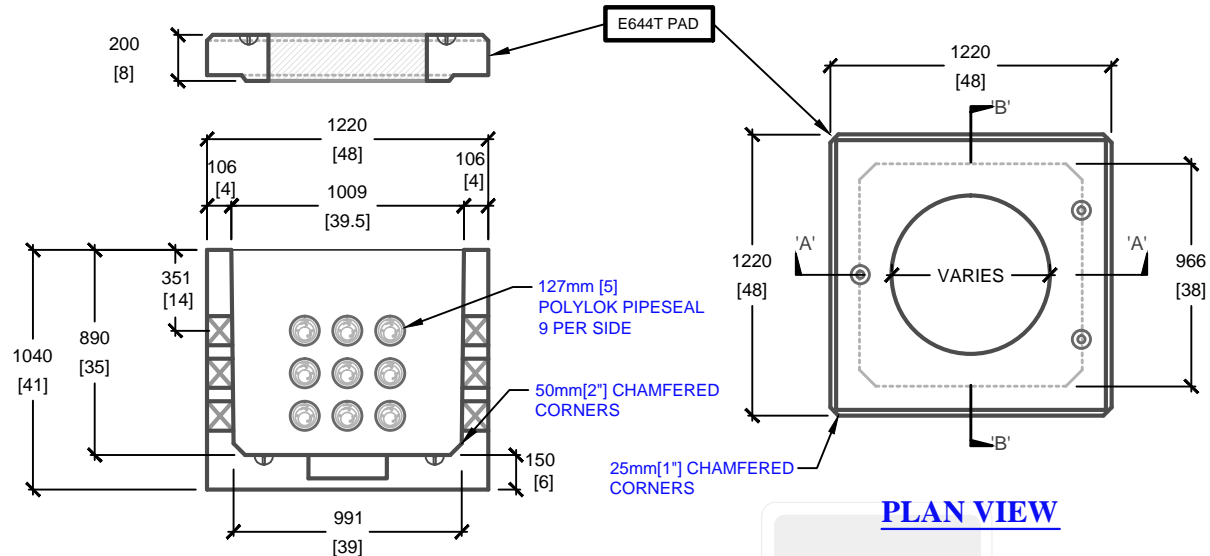
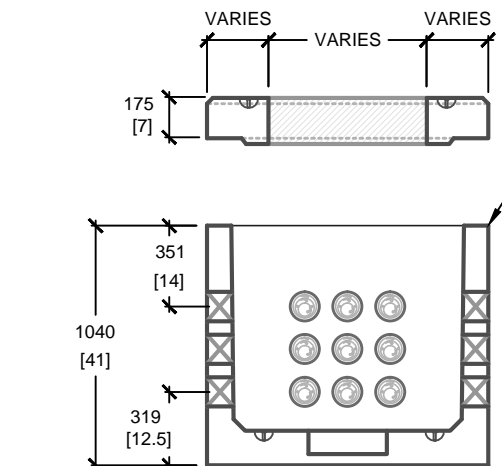


PAD OPENING DETAILS	
PAD TYPE	PAD OPENING SIZE
E644T(27)	686mm[27"]
E644T(30)	762mm[30"]



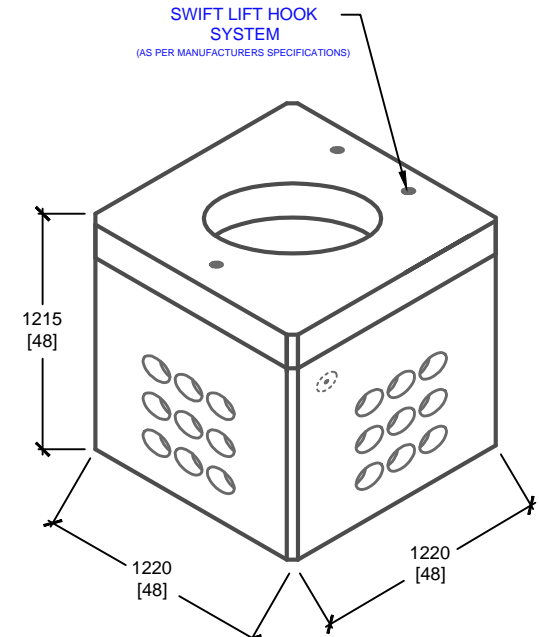
CROSS SECTION 'B'

PLAN VIEW



CROSS SECTION 'A'

PLAN VIEW



ISOMETRIC VIEW

mm [Inches]
ALL DIMENSIONS DEFAULT TO MILLIMETRES



UTILITY STRUCTURES INC.
61 BONGARD AVE | OTTAWA, ON | K2E 6V2
T: 613.225.6398 F: 613.225.1681 TF: 800.267.6466
www.utilitystructures.com

CONSTRUCTION DETAILS:

- DESIGNED TO CL-625-ONT TRUCK LIVE LOADING AS PER CSA S6-06
- E-644B-M & E-644T ASSEMBLED
- CSA 23.4
 - 35 MPa (5000psi) AT 28 DAYS
 - STRIPPING STRENGTH: MIN. 20 MPa(2900psi)
 - 5-8% AIR ENTRAINED
 - EXPOSURE CLASS: C-1
- REINFORCING: STEEL TO CSA CAN A23.1

PRODUCT DETAILS:

- (4) 127mm[5"] POLYLOK PIPESEAL WINDOWS (9 POLYLOKS PER WINDOW)
- CLOSED BOTTOM MANHOLE
- PAD OPENING: VARIES
- 330mm[13"] x 330mm[13"] SUMP BOX
- WEIGHT:
 - E-644B-M BASE: 1,430kg / 3,150 lbs
 - E-644T PAD: 480kg / 1,055 lbs
- CUSTOM OPTIONS AVAILABLE:
 - CUSTOM WINDOWS, OPENINGS, CABLE RACKS, PULLING EYES & MANHOLE HEIGHT

PRODUCT CODE:
E-644MH-M
4' x 4' ELECTRICAL MANHOLE

OUTSIDE DIMENSIONS:
1.215m(H) X 1220mm x 1220mm

TOTAL WEIGHT:
1,910 kg / 4,200 lbs

REVISION DATE: NOVEMBER 14, 2019 **REV. # 2**