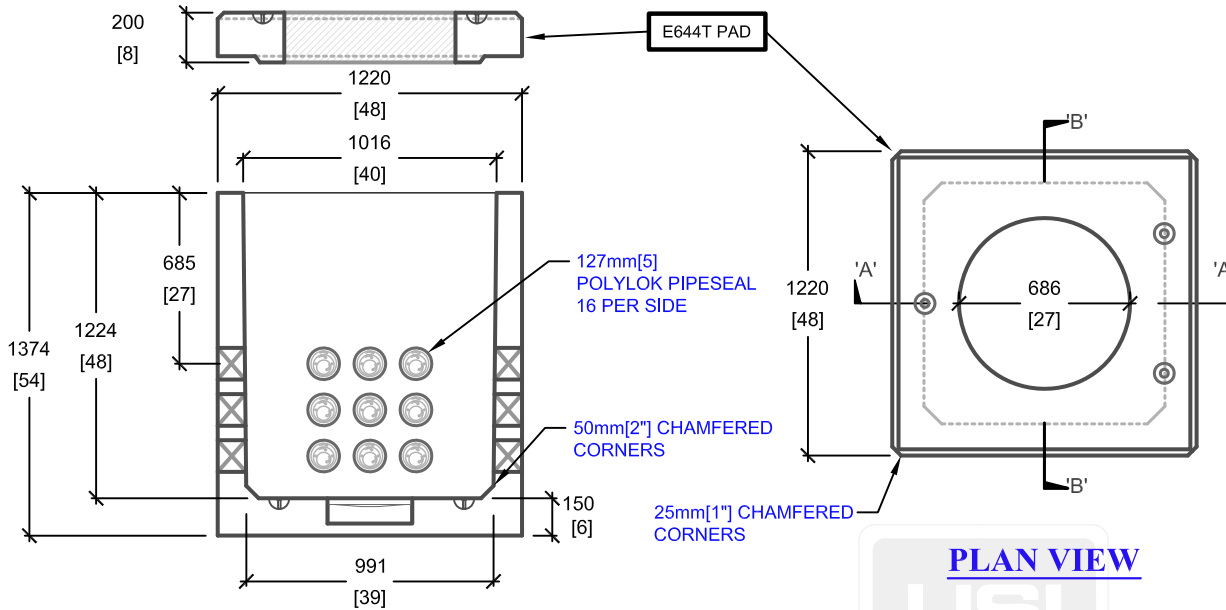
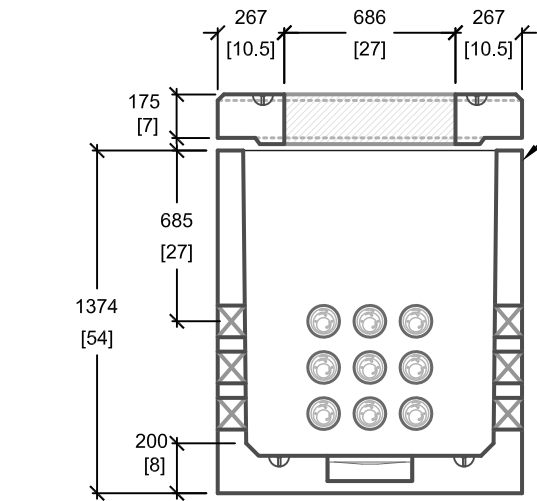


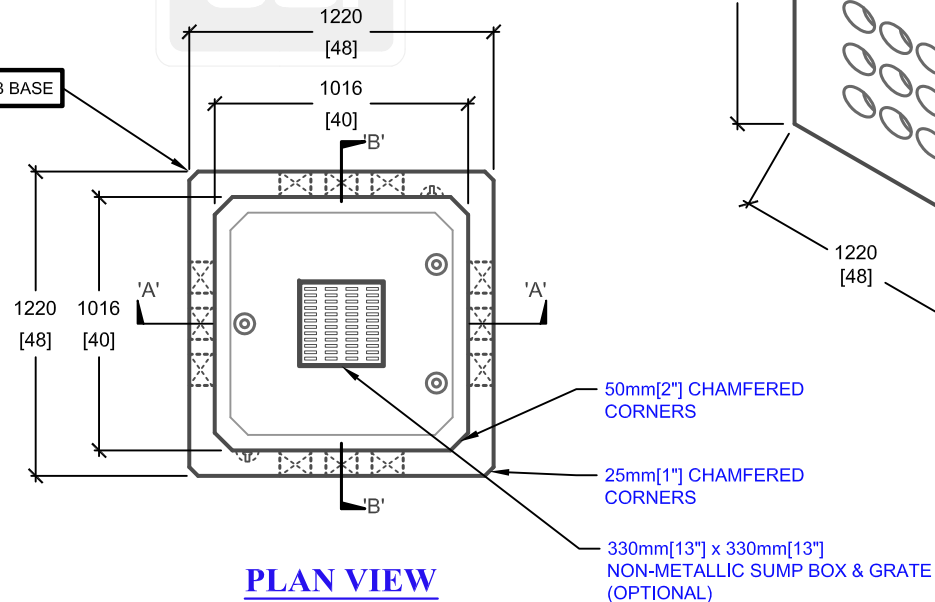
4' x 4' O.D. COMMUNICATION MANHOLE



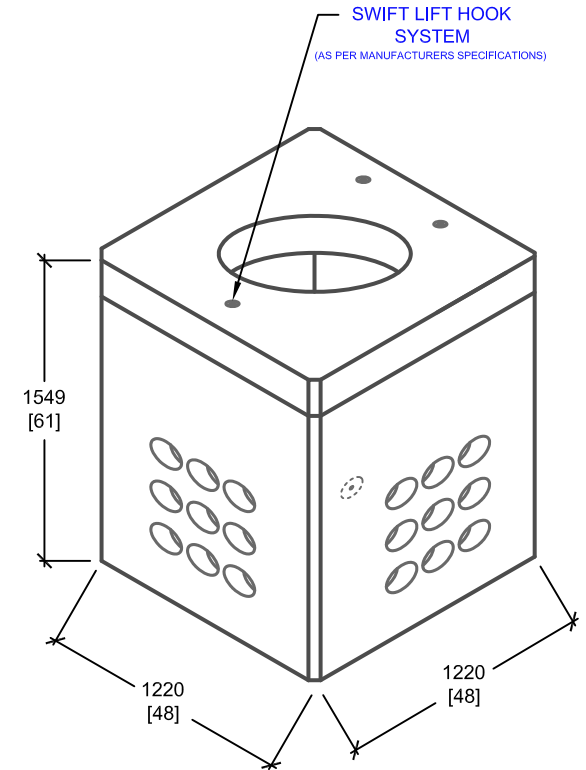
CROSS SECTION 'B'



CROSS SECTION 'A'



PLAN VIEW



mm
[Inches]
ALL DIMENSIONS DEFAULT TO MILLIMETRES



UTILITY STRUCTURES INC.

61 BONGARD AVE | OTTAWA, ON | K2E 6V2
T: 613.225.6398 F: 613.225.1681 TF: 800.267.6466

www.utilitystructures.com

CONSTRUCTION DETAILS:

- DESIGNED TO CL-625-ONT TRUCK LIVE LOADING AS PER [CSA S6-06](#)
- E-644B & E-644T ASSEMBLED

• **CSA 23.4**

- 35 MPa (5000psi) AT 28 DAYS
- STRIPPING STRENGTH: MIN. 20 MPa(2900psi)
- 5-8% AIR ENTRAINED
- EXPOSURE CLASS: C-1
- REINFORCING: STEEL TO CSA CAN A23.1

PRODUCT DETAILS:

- (4) 127mm[5"] POLYLOK PIPESEAL WINDOWS (9 POLYLOKS PER WINDOW)
- CLOSED BOTTOM MANHOLE
- PAD OPENING: 686mm[27"] DIAMETER
- 330mm[13"] x 330mm[13"] OPTIONAL NON-METALLIC SUMP BOX & GRATE
- **WEIGHT:**
E-644B BASE: 1,720kg / 3,785 lbs
E-644T PAD: 480kg / 1,055 lbs
- **CUSTOM OPTIONS AVAILABLE:**
- CUSTOM WINDOWS, OPENINGS, CABLE RACKS, PULLING EYES & MANHOLE HEIGHT

PRODUCT CODE:

E-644MH

4' x 4' COMMUNICATION MANHOLE

OUTSIDE DIMENSIONS:

1.55m(H) X 1220mm x 1220mm

TOTAL WEIGHT:

2,200 kg / 4,840 lbs

REVISION DATE:

JULY 20, 2018

REV. # 2