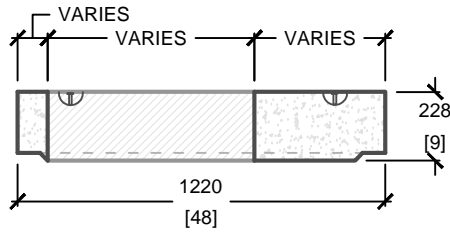
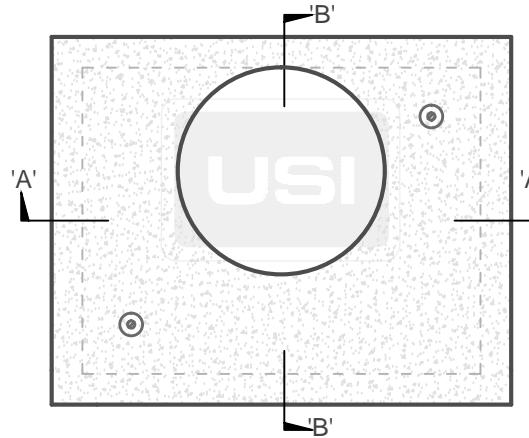


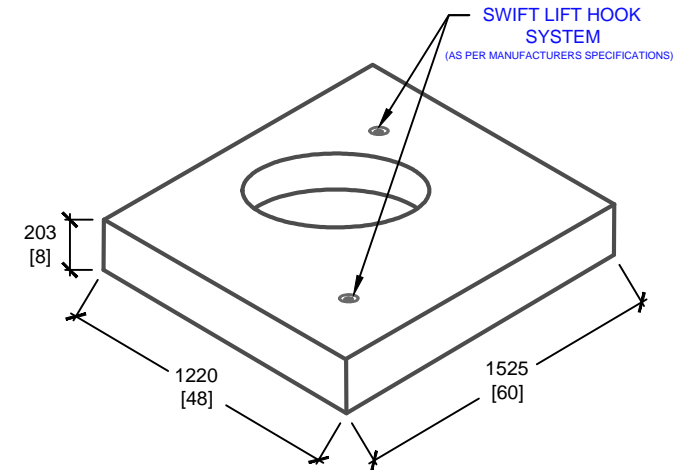
PAD OPENING DETAILS	
PAD TYPE	PAD OPENING SIZE
E63(27)	686mm[27"]
E63(30)	762mm[30"]



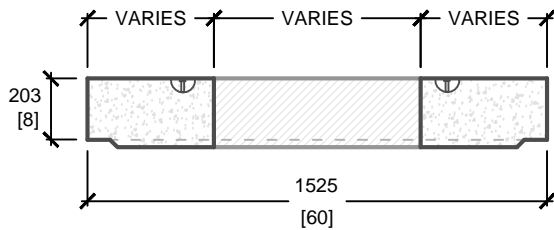
CROSS SECTION 'B'



PLAN VIEW



ISOMETRIC VIEW



CROSS SECTION 'A'

mm
[Inches]
ALL DIMENSIONS DEFAULT TO MILLIMETRES



UTILITY STRUCTURES INC.

61 BONGARD AVE | OTTAWA, ON | K2E 6V2
T: 613.225.6398 F: 613.225.1681 TF: 800.267.6466

www.utilitystructures.com

CONSTRUCTION DETAILS:

- **LOADING AS PER CSA S6-06**
- **USE WITH BASE E-62**

• **CSA 23.4**

- 35 MPa (5000psi) AT 28 DAYS
- **STRIPPING STRENGTH: MIN. 20 MPa(2900psi)**
- 5-8% AIR ENTRAINED
- EXPOSURE CLASS: C-1
- **REINFORCING: STEEL TO CSA CAN A23.1**

PRODUCT DETAILS:

- **PAD OPENING: AVAILABLE IN [27"] AN [30"] OPENING DIAMETER**

CUSTOM OPTIONS AVAILABLE:

- **CUSTOM ACCESS OPENING**

PRODUCT CODE:

E-63

ELECTRICAL MANHOLE PAD

OUTSIDE DIMENSIONS:

.20m(H) x 1220mm x 1525mm [O.D.]

TOTAL WEIGHT:

900 kg / 1980 lbs

REVISION DATE:

NOVEMBER 18, 2019

REV. # 6