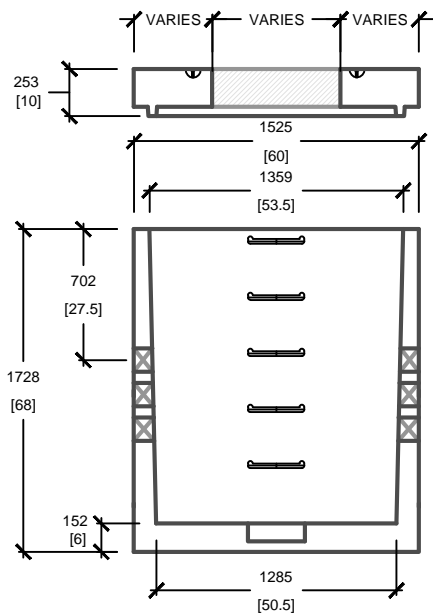
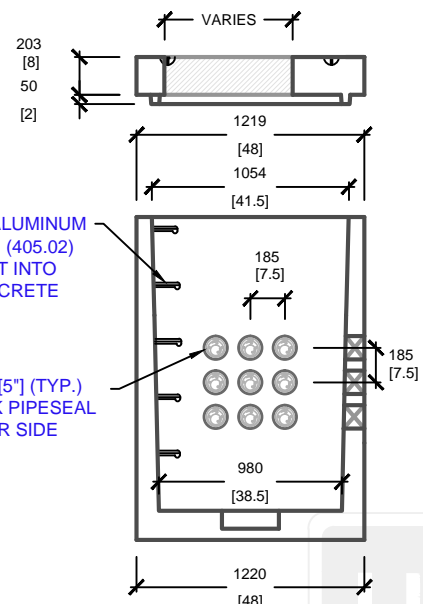


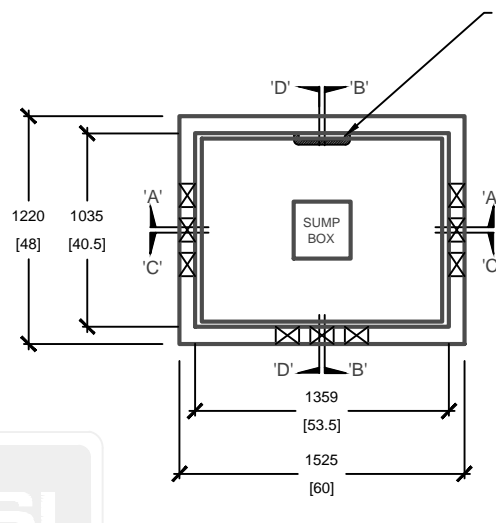
PAD OPENING DETAILS	
PAD TYPE	PAD OPENING SIZE
E644T(27)	686mm[27"]
E644T(30)	762mm[30"]



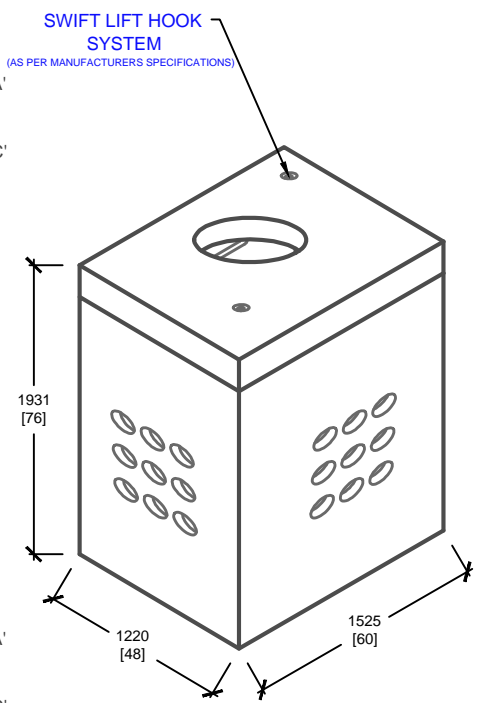
CROSS SECTION 'A'



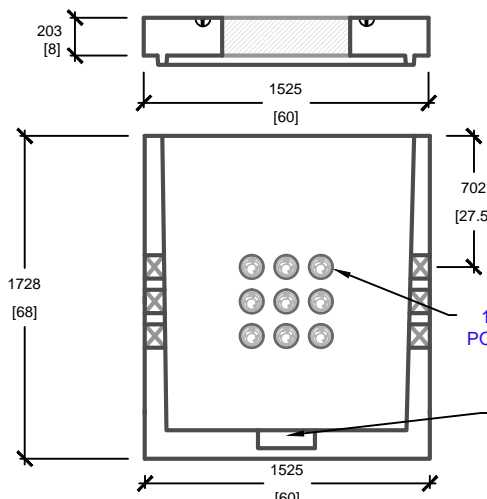
CROSS SECTION 'B'



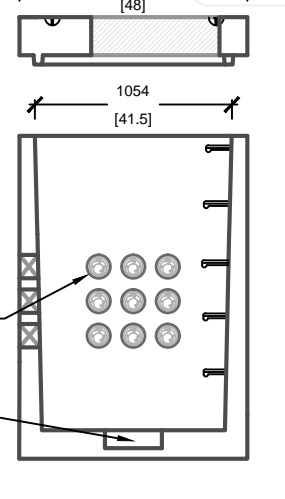
E-62 BASE



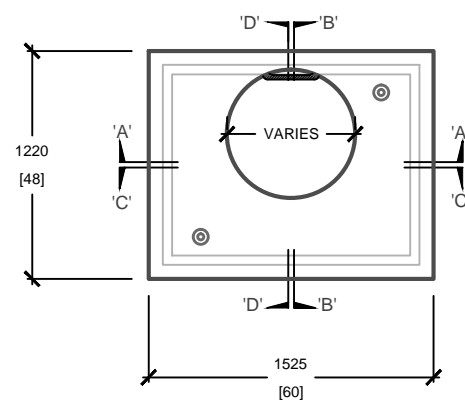
ISOMETRIC VIEW



CROSS SECTION 'C'



CROSS SECTION 'D'



E-63 PAD

SOLID ALUMINUM STEPS (405.02) CAST INTO CONCRETE

127mm [5"] (TYP.) POLYLOK PIPESEAL 9 PER SIDE

127mm [5"] (TYP.) POLYLOK PIPESEAL 9 PER SIDE

305mmx305mm [12]x[12] SUMP BOX

SOLID ALUMINUM STEPS (405.02) CAST INTO CONCRETE

SWIFT LIFT HOOK SYSTEM (AS PER MANUFACTURERS SPECIFICATIONS)

mm [Inches]
ALL DIMENSIONS DEFAULT TO MILLIMETRES



UTILITY STRUCTURES INC.
61 BONGARD AVE | OTTAWA, ON | K2E 6V2
T: 613.225.6398 F: 613.225.1681 TF: 800.267.6466
www.utilitystructures.com

- CONSTRUCTION DETAILS:**
- LOADING AS PER [CSA S6-06](#)
 - E-62 BASE AND E-63 PAD ASSEMBLED
- **CSA 23.4**
- 35 MPa (5000psi) AT 28 DAYS
 - STRIPPING STRENGTH: MIN. 20 MPa(2900psi)
 - 5-8% AIR ENTRAINED
 - EXPOSURE CLASS: C-1
 - REINFORCING: STEEL TO CSA CAN A23.1

- PRODUCT DETAILS:**
- MANHOLE OPENING = AVAILABLE IN [27"] AND [30"] PAD OPENING.
 - MANHOLE HEIGHT: 1.93m
 - (3) POLYLOK WINDOWS ((9) 127mm[5"] POLYLOKS @ 185mm[7.5"] C.O.C. PER WINDOW)
 - 1 WALL WITHOUT WINDOW TO ACCOMMODATE LADDER RUNGS

PRODUCT CODE:	
E-62 ^C/_W E-63	
4' x 5' ELECTRICAL MANHOLE	
INSIDE DIMENSIONS:	
1.93m(H) X 1220mm x 1525mm	
TOTAL WEIGHT:	
3,050 kg / 6,710 lbs	
REVISION DATE:	NOVEMBER, 2019
	REV. # 6