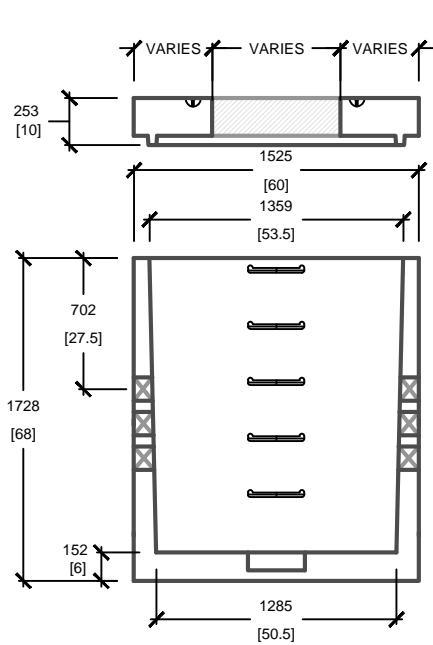
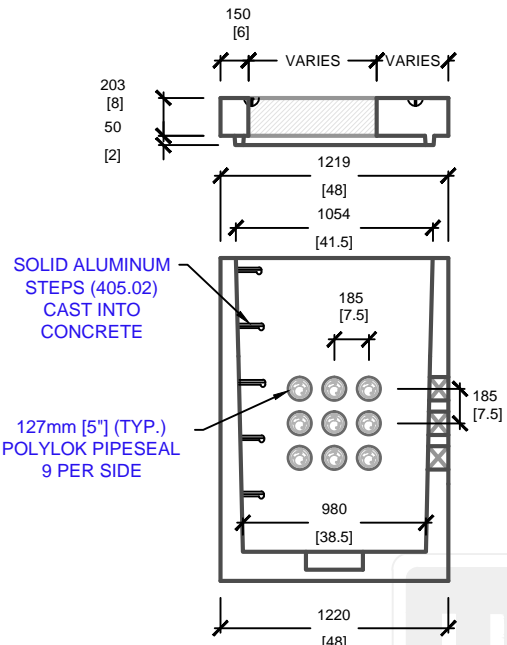


# 4' x 5' O.D. COMMUNICATION MANHOLE

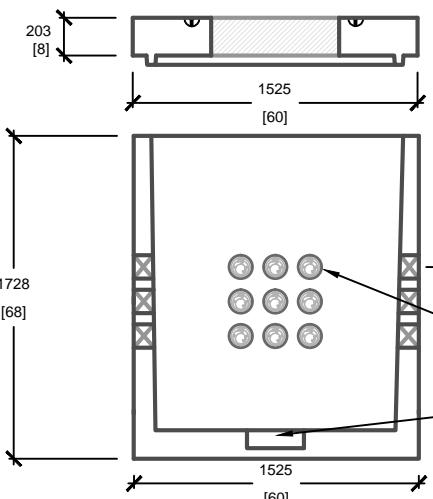
PAD OPENING DETAILS	
PAD TYPE	PAD OPENING SIZE
E63(27)	686mm[27"]
E63(30)	762mm[30"]



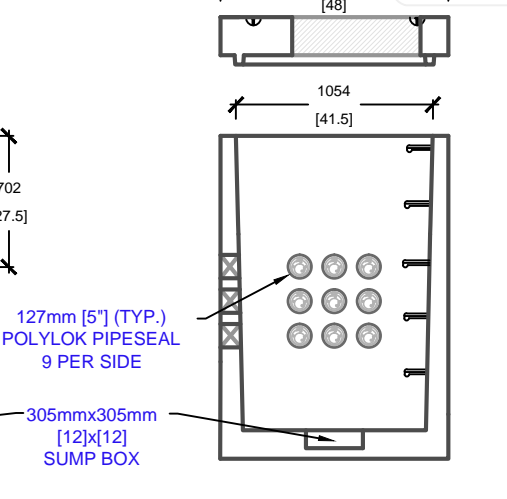
**CROSS SECTION 'A'**



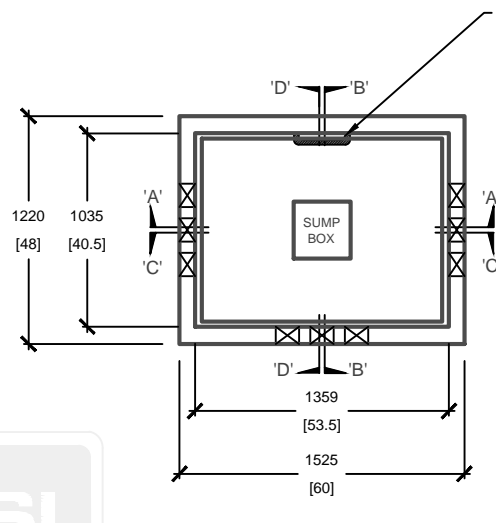
**CROSS SECTION 'B'**



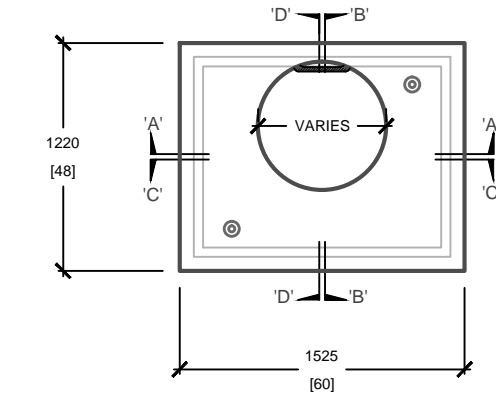
**CROSS SECTION 'C'**



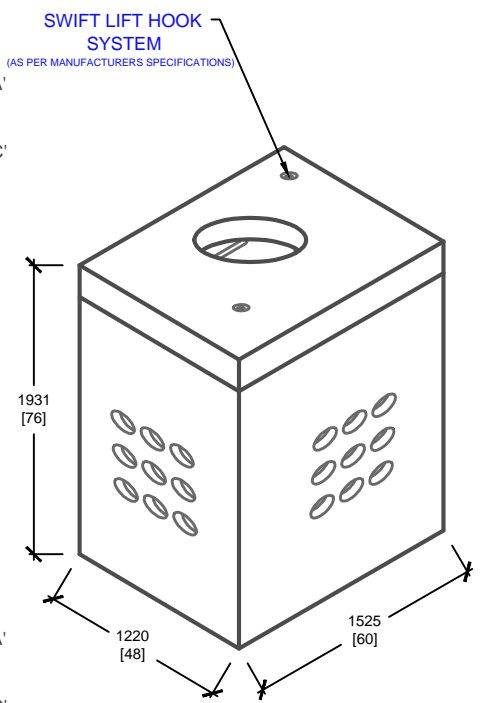
**CROSS SECTION 'D'**



**E-62 BASE**



**E-63 PAD**



**ISOMETRIC VIEW**

**CONSTRUCTION DETAILS:**

- LOADING AS PER [CSA S6-06](#)
- E-62 BASE AND E-63 PAD ASSEMBLED

- CSA 23.4**
- 35 MPa (5000psi) AT 28 DAYS
- STRIPPING STRENGTH: MIN. 20 MPa(2900psi)
- 5-8% AIR ENTRAINED
- EXPOSURE CLASS: C-1
- REINFORCING: STEEL TO CSA CAN A23.1

**PRODUCT DETAILS:**

- MANHOLE OPENING = AVAILABLE IN [27"] AND [32"] DIAMETER
- MANHOLE HEIGHT: 1.93m
- (3) POLYLOK WINDOWS ((9) 127mm[5"] POLYLOKS @ 185mm[7.5"] C.O.C. PER WINDOW)
- 1 WALL WITHOUT WINDOW TO ACCOMMODATE LADDER RUNGS

**PRODUCT CODE:**

## E-62 <sup>C</sup>/<sub>W</sub> E-63

4' x 5' COMMUNICATION MANHOLE

**INSIDE DIMENSIONS:**

### 1.93m(H) X 1220mm x 1525mm

**TOTAL WEIGHT:**

### 3,050 kg / 6,710 lbs

**REVISION DATE:** NOVEMBER 18, 2019 **REV. # 6**



**UTILITY STRUCTURES INC.**  
 61 BONGARD AVE | OTTAWA, ON | K2E 6V2  
 T: 613.225.6398 F: 613.225.1681 TF: 800.267.6466  
[www.utilitystructures.com](http://www.utilitystructures.com)

mm [Inches]  
 ALL DIMENSIONS DEFAULT TO MILLIMETRES