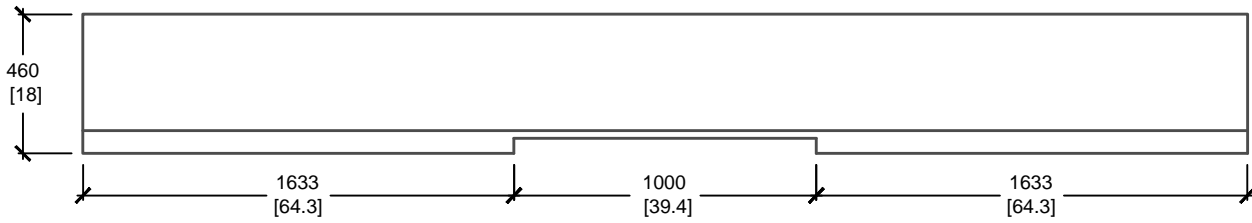
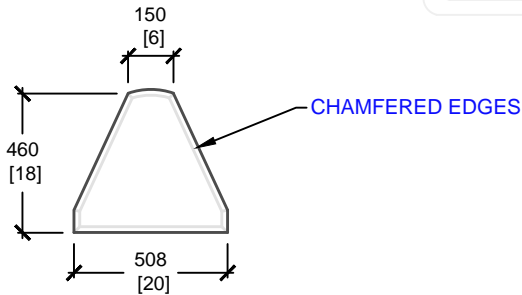
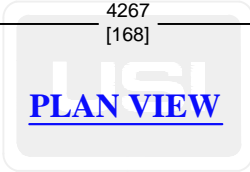
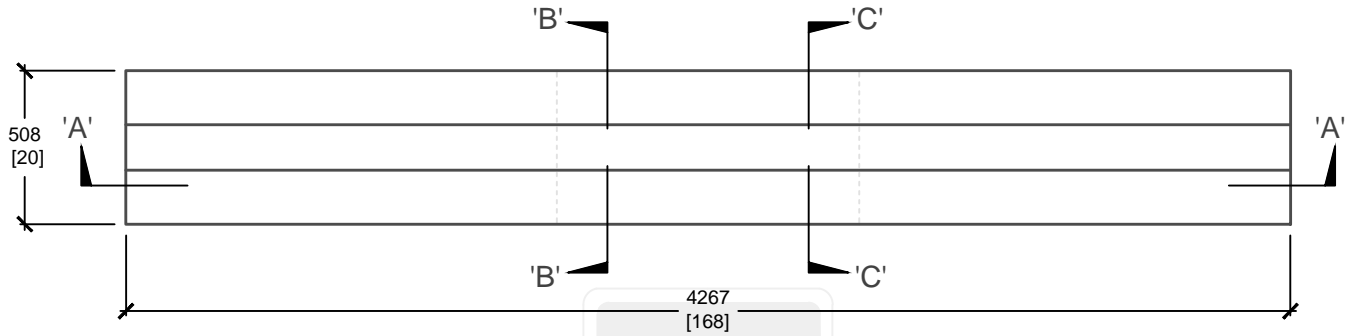


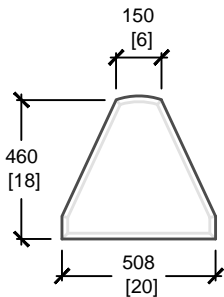
\* AVAILABLE IN ANY LENGTH (MAXIMUM 4.267m) \*



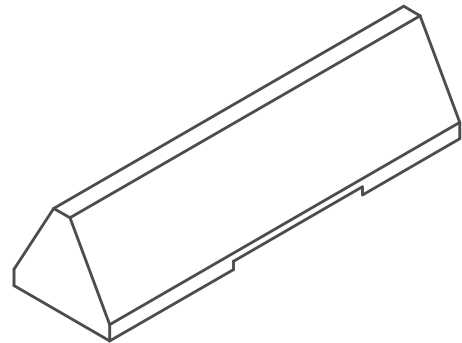
**CROSS SECTION 'A'**



**CROSS SECTION 'B'**



**CROSS SECTION 'C'**



**ISOMETRIC VIEW**

mm [Inches]  
ALL DIMENSIONS DEFAULT TO MILLIMETRES



**UTILITY STRUCTURES INC.**

61 BONGARD AVE | OTTAWA, ON | K2E 6V2  
T: 613.225.6398 F: 613.225.1681 TF: 800.267.6466

[www.utilitystructures.com](http://www.utilitystructures.com)

**CONSTRUCTION DETAILS:**

- AVAILABLE IN VARIOUS LENGTHS, COLOURS, AND FINISHES
- HOOK AND EYE CONNECTION AVAILABLE

- CSA 23.4-05
- 35 MPa (5000psi) AT 28 DAYS
- STRIPPING STRENGTH: MIN. 20 MPa(2900psi)
- 5-8% AIR ENTRAINED
- EXPOSURE CLASS: C-1
- REINFORCING: STEEL TO CSA CAN A23.1

**PRODUCT CODE:**

**E-40**  
MINI BARRIER

**DIMENSIONS:**

**460mm(H) x 4267mm(L)**

**TOTAL WEIGHT:**

**1,600 kg / 3,520 lbs**

**REVISION DATE:**

**JANUARY 4, 2018**

**REV. # 4**