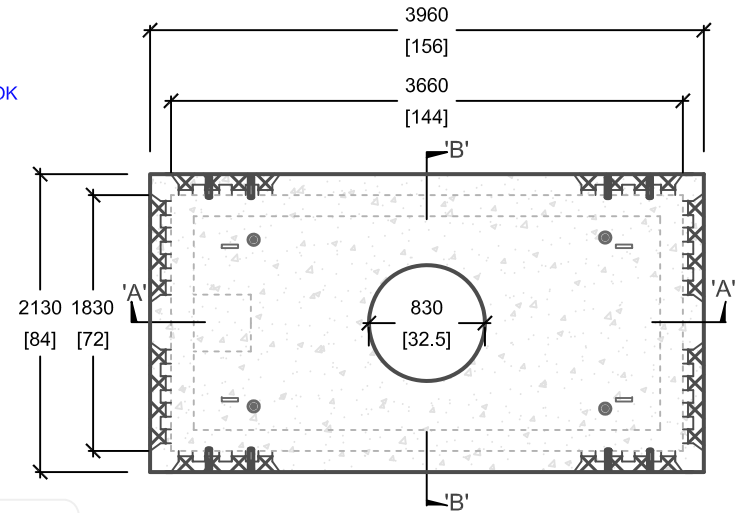
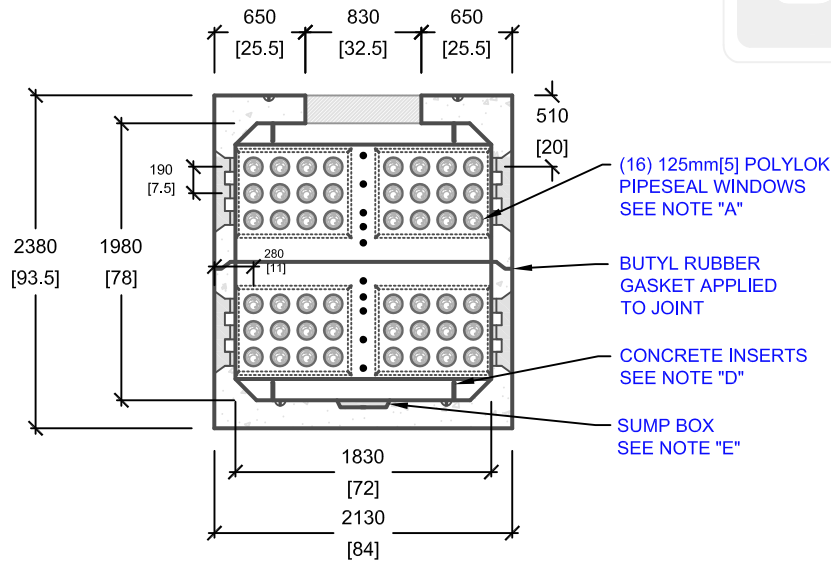


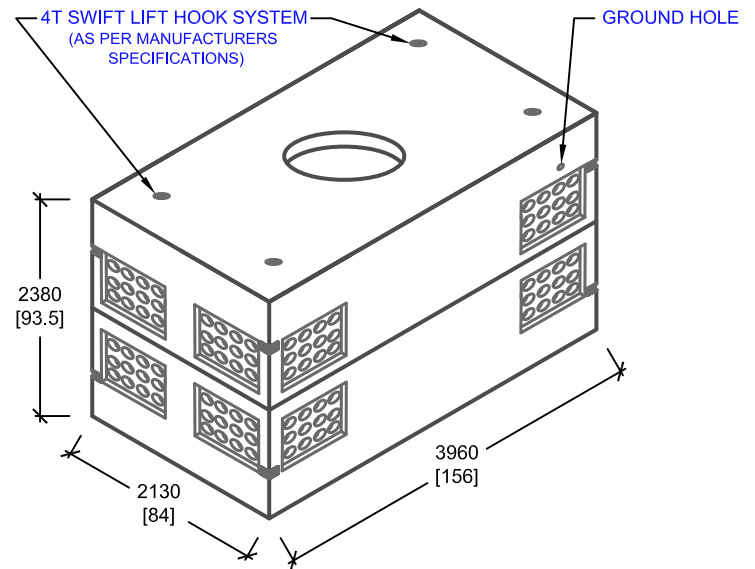
**CROSS SECTION 'A'**



**PLAN VIEW**



**CROSS SECTION 'B'**



**ISOMETRIC VIEW**

mm  
[Inches]  
ALL DIMENSIONS DEFAULT TO MILLIMETRES



**UTILITY STRUCTURES INC.**

61 BONGARD AVE | OTTAWA, ON | K2E 6V2  
T: 613.225.6398 F: 613.225.1681 TF: 800.267.6466

[www.utilitystructures.com](http://www.utilitystructures.com)

**CONSTRUCTION DETAILS:**

- REFERENCE **HYDRO OTTAWA UCS0014 - REV# 12**
- DESIGNED TO CL-625-ONT TRUCK LIVE LOADING AS PER CSA S6-06

• **CSA 23.4-05**

- 50 MPa (7252psi) AT 28 DAYS
- STRIPPING STRENGTH: MIN. 20 MPa(2900psi)
- 5-8% AIR ENTRAINMENT
- EXPOSURE CLASS: C-1
- REINFORCING: STEEL TO CSA CAN A23.1

**PRODUCT DETAILS:**

- A. (16) 125mm[5"] POLYLOK PIPESEAL WINDOWS
- B. (8) GALVANIZED PULLING IRONS
- C. (8) 32mm[1.25"] LEL-DH INSERTS SPACED AT 300mm[12"] CENTRE ON CENTRE
- D. (80) 13mm[.5"] CONCRETE INSERTS
- E. (1) 400mm[16"]x400mm[16"] SUMP BOX

**WEIGHT:**

- TOP: 7,000 kg / 15,400 lbs
- BOTTOM: 7,200 kg / 15,840 lbs

**PRODUCT CODE:**

**E-36**

6' X 12' ELECTRICAL MANHOLE

**INSIDE DIMENSIONS:**

**2.38m(H) X 1830mm x 3660mm**

**TOTAL WEIGHT:**

**14,200 kg / 31,240 lbs**

**REVISION DATE:**

**OCTOBER 25, 2017**

REV. # 12