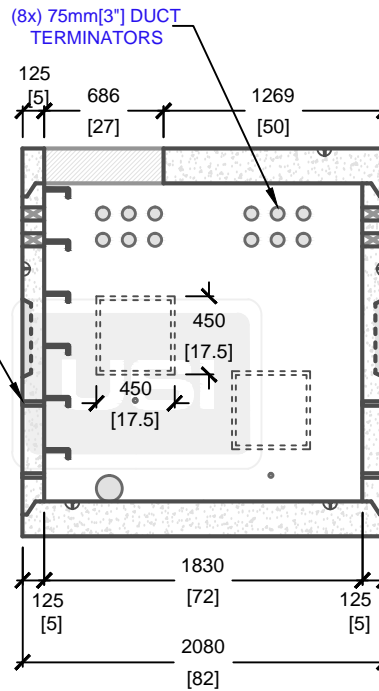
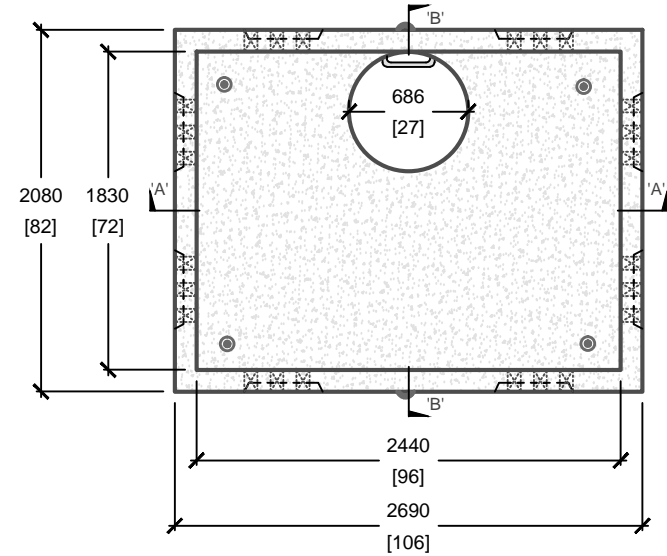


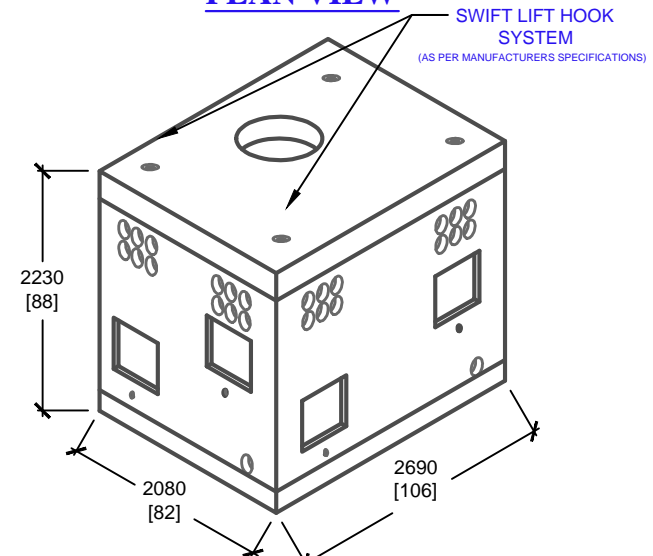
**CROSS SECTION 'A'**



**CROSS SECTION 'B'**



**PLAN VIEW**



**ISOMETRIC VIEW**

mm  
[Inches]  
ALL DIMENSIONS DEFAULT TO MILLIMETRES



**UTILITY STRUCTURES INC.**

61 BONGARD AVE | OTTAWA, ON | K2E 6V2  
T: 613.225.6398 F: 613.225.1681 TF: 800.267.6466

[www.utilitystructures.com](http://www.utilitystructures.com)

**CONSTRUCTION DETAILS:**

- AS PER **OPSD 2111.05**
- DESIGNED TO CL-625-ONT TRUCK LIVE LOADING AS PER **CSA S6-06**

• **CSA 23.4-05**

- 35 MPa (5000psi) AT 28 DAYS
- STRIPPING STRENGTH: MIN. 20 MPa(2900psi)
- 5-8% AIR ENTRAINED
- EXPOSURE CLASS: F-1
- REINFORCING: STEEL TO CSA CAN A23.1

**PRODUCT DETAILS:**

- (8) 450mm[18"]x450mm[18"] KNOCKOUT WINDOWS
- (8) WINDOWS WITH (6) 75mm[3"] DUCT TERMINATORS PER WINDOW
- (4) 150mm[6"] KNOCKOUT DRAIN HOLES
- (8) 25mm[1"] GROUND HOLES (FOR PULLING EYES)

**WEIGHT:**

- TOP SLAB: 2,600 kg / 6,300 lbs
- SPACER: 5,200 kg / 9,900 lbs
- BASE SLAB: 2,800 kg / 6,700 lbs

**PRODUCT CODE:**

**E-25**

OPSD MANHOLE

**INSIDE DIMENSIONS:**

**2.23m(H) X 1830mm x 2440mm**

**TOTAL WEIGHT:**

**10,600 kg / 22,880 lbs**

**REVISION DATE:**

**NOVEMBER 18, 2017**

**REV. # 10**