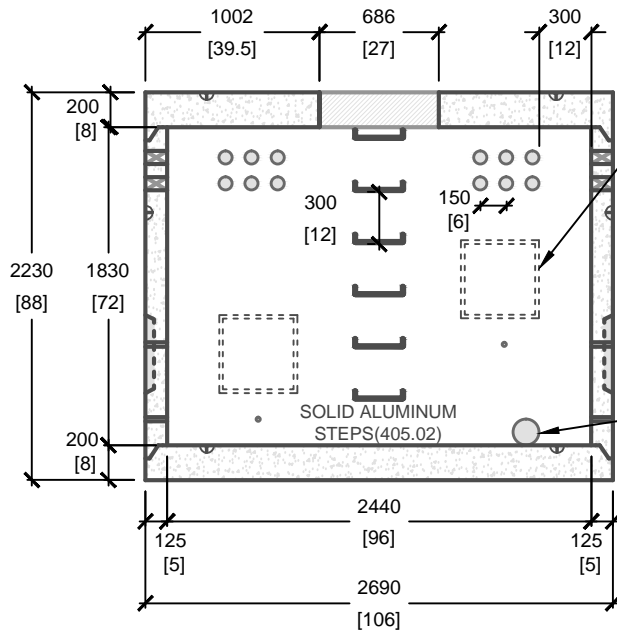
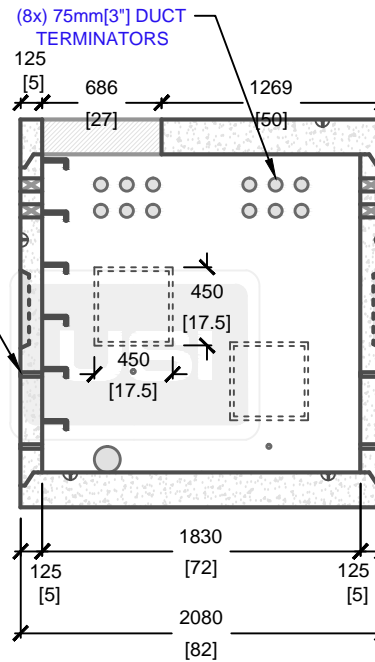


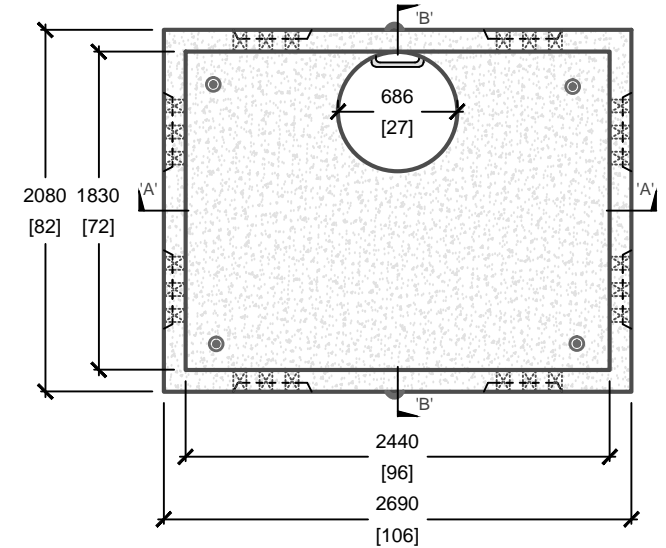
7' x 9' O.D. COMMUNICATION MANHOLE



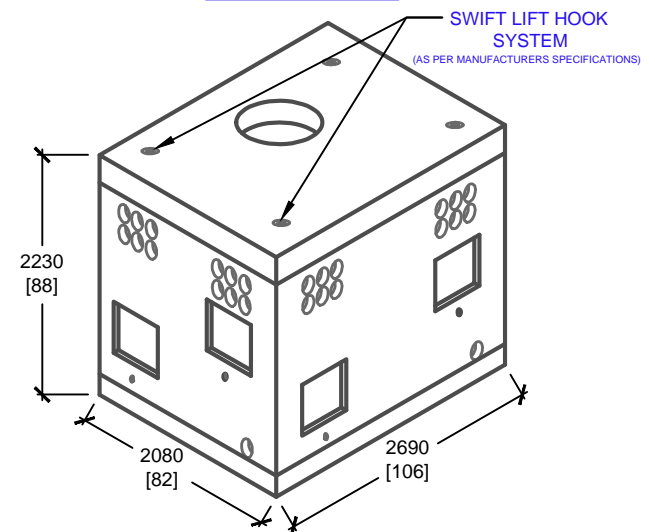
CROSS SECTION 'A'



CROSS SECTION 'B'



PLAN VIEW



ISOMETRIC VIEW

mm
[Inches]
ALL DIMENSIONS DEFAULT TO MILLIMETRES



UTILITY STRUCTURES INC.
61 BONGARD AVE | OTTAWA, ON | K2E 6V2
T: 613.225.6398 F: 613.225.1681 TF: 800.267.6466
www.utilitystructures.com

- CONSTRUCTION DETAILS:**
- AS PER **OPSD 2111.05**
 - DESIGNED TO CL-625-ONT TRUCK LIVE LOADING AS PER **CSA S6-06**
- **CSA 23.4-05**
- 35 MPa (5000psi) AT 28 DAYS
 - STRIPPING STRENGTH: MIN. 20 MPa(2900psi)
 - 5-8% AIR ENTRAINED
 - EXPOSURE CLASS: C-1
 - REINFORCING: STEEL TO CSA CAN A23.1

- PRODUCT DETAILS:**
- (8) 450mm[18"]x450mm[18"] KNOCKOUT WINDOWS
 - (8) WINDOWS WITH (6) 75mm[3"] DUCT TERMINATORS PER WINDOW
 - (4) 150mm[6"] KNOCKOUT DRAIN HOLES
 - (8) 25mm[1"] GROUND HOLES (FOR PULLING EYES)
- WEIGHT:**
- TOP SLAB: 2,600 kg / 6,300 lbs
 - SPACER: 5,200 kg / 9,900 lbs
 - BASE SLAB: 2,800 kg / 6,700 lbs

PRODUCT CODE:	
E-25	
COMMUNICATION MANHOLE	
INSIDE DIMENSIONS:	
2.23m(H) X 1830mm x 2440mm	
TOTAL WEIGHT:	
10,600 kg / 22,880 lbs	
REVISION DATE:	NOVEMBER 18, 2019
REV. #	10