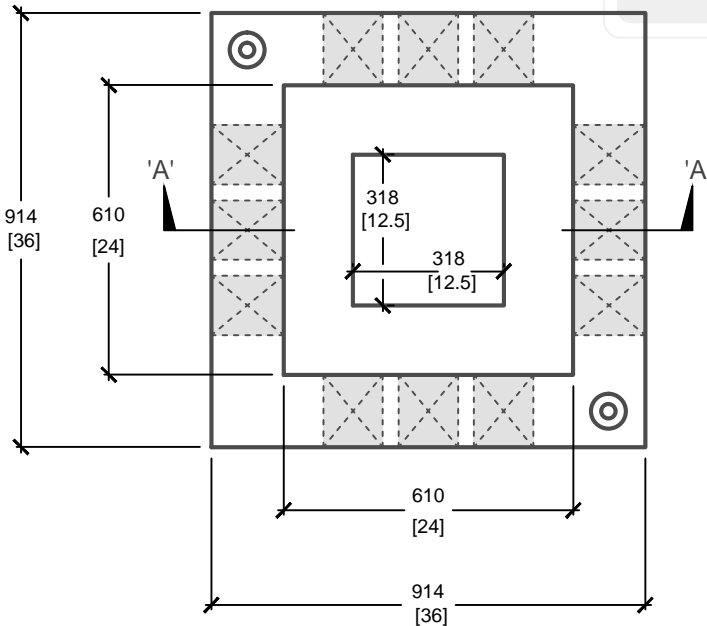


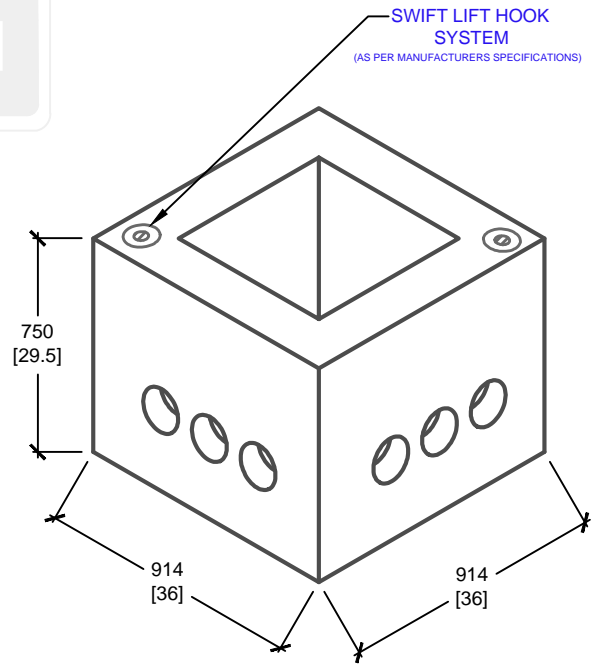
(3) 125mm[5"] POLYLOK PIPESEALS  
(3 PER SIDE)

318mm[12.5"] x 318mm[12.5"]  
HOLE IN BOTTOM  
\* OPTION: AVAILABLE WITH CLOSED BOTTOM

**CROSS SECTION 'A'**



**PLAN VIEW**



**ISOMETRIC VIEW**

mm  
[Inches]  
ALL DIMENSIONS DEFAULT TO MILLIMETRES



**UTILITY STRUCTURES INC.**

61 BONGARD AVE | OTTAWA, ON | K2E 6V2  
T: 613.225.6398 F: 613.225.1681 TF: 800.267.6466

[www.utilitystructures.com](http://www.utilitystructures.com)

**CONSTRUCTION DETAILS:**

- SIMILAR TO **OPSD 2112.04**
- DESIGNED TO CL-625-ONT TRUCK LIVE LOADING AS PER CSA S6-06
- (3) POLYLOK PIPESEALS PER WALL

- CSA 23.4-05
- 35 MPa (5000psi) AT 28 DAYS
- STRIPPING STRENGTH: MIN. 20 MPa(2900psi)
- 5-8% AIR ENTRAINED
- EXPOSURE CLASS: C-1
- REINFORCING: STEEL TO CSA CAN A23.1

**PRODUCT CODE:**

**E-22 (3)**

ELECTRICAL HANDHOLE

**INSIDE DIMENSIONS:**

**0.75m(H) x 610mm x 610mm**

**TOTAL WEIGHT:**

**915 kg / 2,000 lbs**

**REVISION DATE:**

**SEPTEMBER 08, 2017**

**REV. #3**