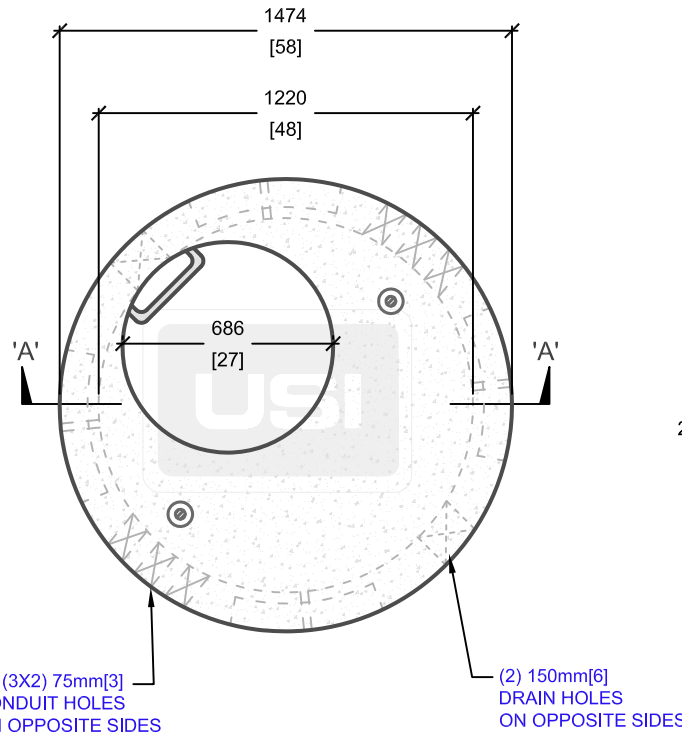
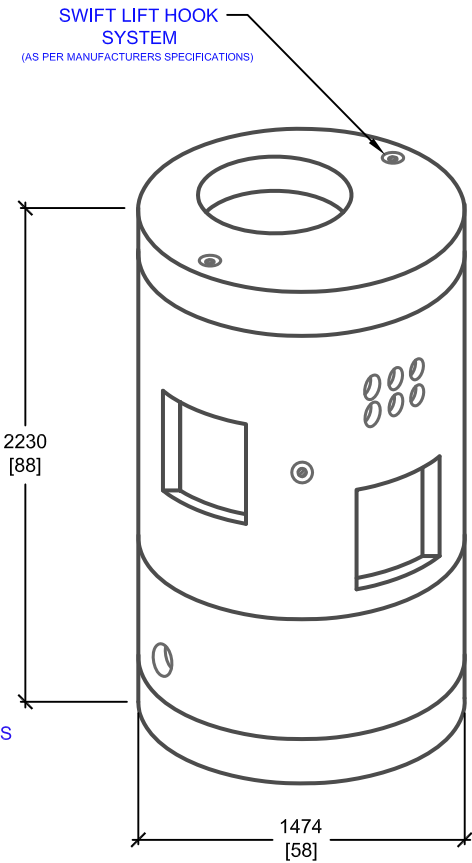


**CROSS SECTION 'A'**



**PLAN VIEW**



**ISOMETRIC VIEW**

mm  
[Inches]  
ALL DIMENSIONS DEFAULT TO MILLIMETRES



**UTILITY STRUCTURES INC.**

61 BONGARD AVE | OTTAWA, ON | K2E 6V2  
T: 613.225.6398 F: 613.225.1681 TF: 800.267.6466

[www.utilitystructures.com](http://www.utilitystructures.com)

**CONSTRUCTION DETAILS:**

- AS PER **OPSD 2111.03**
- DESIGNED TO CL-625-ONT TRUCK LIVE LOADING AS PER **CSA S6-06**

• **CSA 23.4**

- 35 MPa (5000psi) AT 28 DAYS
- STRIPPING STRENGTH: MIN. 20 MPa(2900psi)
- 5-8% AIR ENTRAINED
- EXPOSURE CLASS: C-1
- REINFORCING: STEEL TO CSA CAN A23.1

**PRODUCT DETAILS:**

- (4) 450mm[18"] x 450mm[18"] KNOCKOUTS
- (2) 75mm[3"] CONDUIT HOLE WINDOWS (3X2)
- (2) 150mm[6"] DRAIN HOLES ON OPPOSITE SIDES
- (4) 25mm[1"] HOLES

**WEIGHTS:**

- FLAT TOP: 850 kg / 1,870 lbs
- 1.2m HIGH SPACER: 1,560 kg / 3,432 lbs
- 0.6m HIGH SPACER: 790 kg / 1,738 lbs
- BOTTOM: 650 kg / 1,430 lbs

**OPTIONS AVAILABLE:**

- PULLING EYES
- CUSTOM OPENINGS

**PRODUCT CODE:**

**E-20**

ELECTRICAL MANHOLE

**INSIDE DIMENSIONS:**

**2.2m(H) x 1220mm DIA.**

**TOTAL WEIGHT:**

**3,850 kg / 8,470 lbs**

**REVISION DATE:**

**JANUARY 19, 2018**

REV. # 6