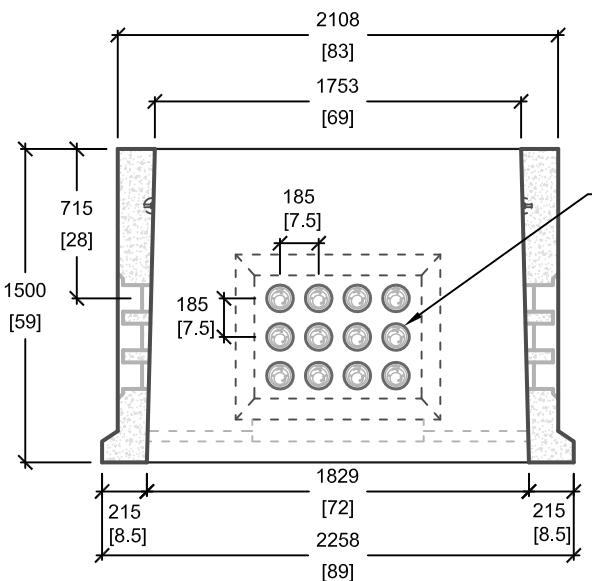
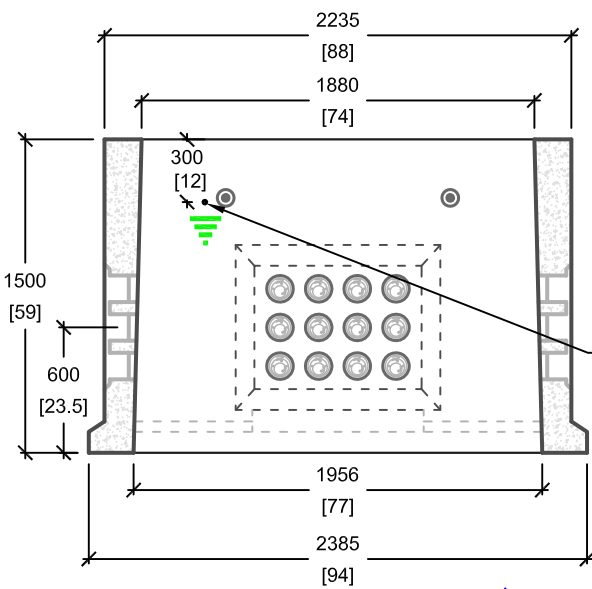


LOAD REQUIREMENTS	
DISTRIBUTED LATERAL LOAD	25 kN/m ²
TOP SLAB DISTRIBUTED LOAD	60 kN/m ²
TOP SLAB POINT LOAD	70 kN

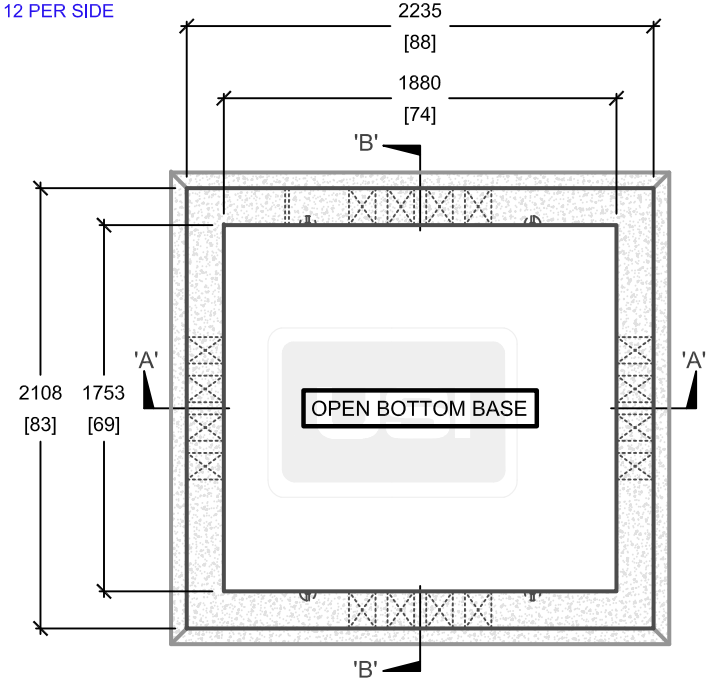


CROSS SECTION 'B'

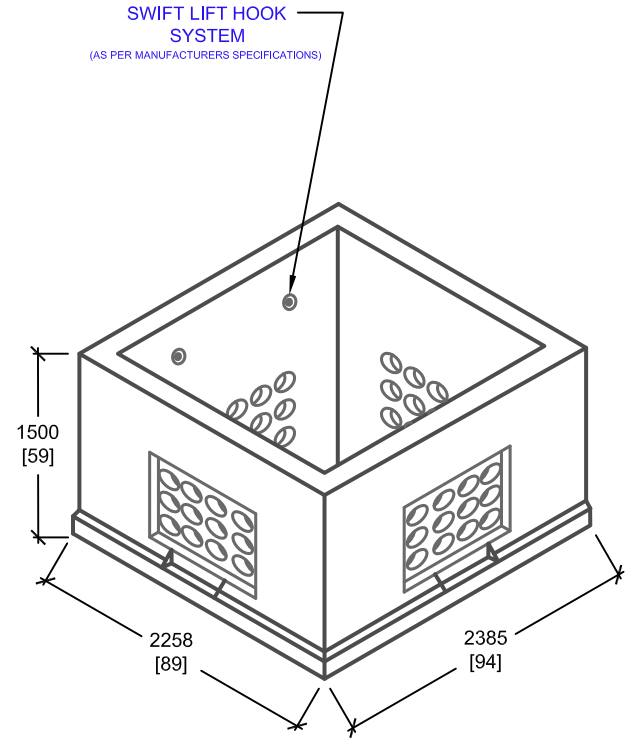


CROSS SECTION 'A'

Ø127mm [5] (TYP.)
POLYLOK PIPESEAL
12 PER SIDE



PLAN VIEW



ISOMETRIC VIEW

SWIFT LIFT HOOK
SYSTEM
(AS PER MANUFACTURERS SPECIFICATIONS)

mm
[Inches]
ALL DIMENSIONS DEFAULT TO MILLIMETRES

- NOTES:**
- SOIL BEARING CAPACITY TO BE MIN. 240kPa (SLS) OR USE A CONCRETE BASE PAD; VERIFY ON SITE.
 - SEISMIC ANCHORAGE FROM EQUIPMENT TO PAD AND PAD TO BASE TO BE PROVIDED BY OTHERS.
 - BACK FILL WITH NON-FROST SUSCEPTIBLE FILL TO PREVENT UPLIFT OF TOP SLAB.



UTILITY STRUCTURES INC.
61 BONGARD AVE | OTTAWA, ON | K2E 6V2
T: 613.225.6398 F: 613.225.1681 TF: 800.267.6466
www.utilitystructures.com

- CONSTRUCTION DETAILS:**
- REFERENCE **HYDRO OTTAWA UCS0026**
 - **CSA 23.4-05**
 - 35 MPa (5000psi) AT 28 DAYS
 - STRIPPING STRENGTH: MIN. 20 MPa(2900psi)
 - 5-8% AIR ENTRAINED
 - EXPOSURE CLASS: C-1
 - REINFORCING: STEEL TO CSA CAN A23.1

- PRODUCT DETAILS:**
- (4) 127mm[5"] POLYLOK PIPESEAL WINDOWS (12 POLYLOKS PER WINDOW)
 - SWITCHGEAR TRANSFORMER BASE
 - CLOSED BOTTOM VERSION AVAILABLE (DWG# E-13B)
 - USE WITH E-13PS, E-13PMH, E-13TB, E-13HON OR E-13 (404) SWITCHGEAR PAD
 - CUSTOM OPTIONS AVAILABLE:
 - CUSTOM WINDOWS & OPENINGS

PRODUCT CODE:

E-13

SWITCHGEAR TRANSFORMER BASE

OUTSIDE DIMENSIONS:
1.5m(H) x 2108mm x 2235mm

TOTAL WEIGHT:
5,200 kg / 11,440 lbs

REVISION DATE: SEPTEMBER 15, 2017 **REV. # 6**