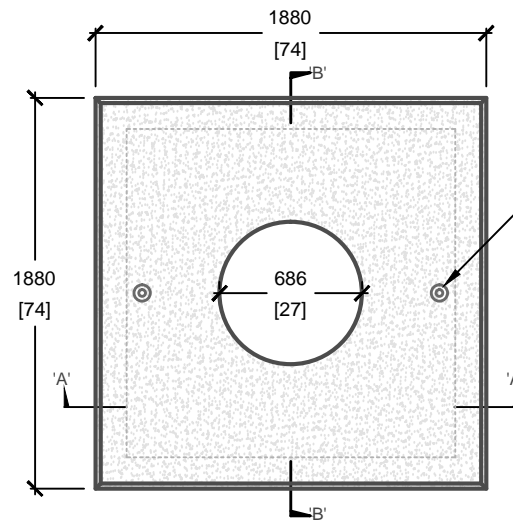
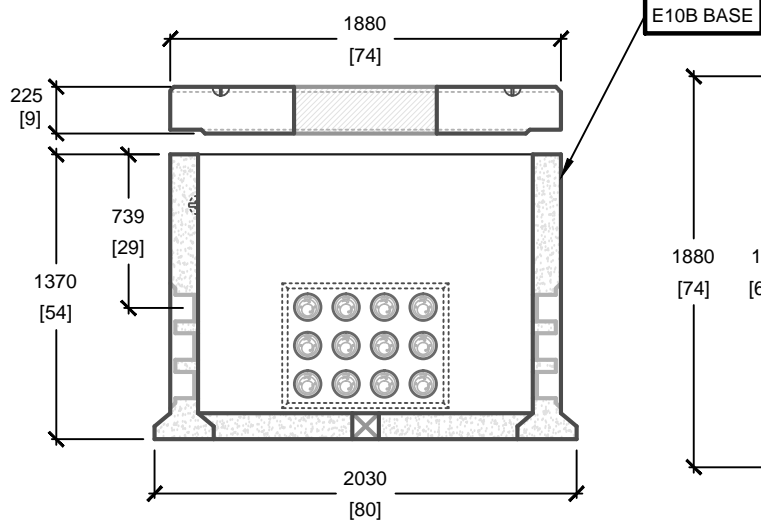
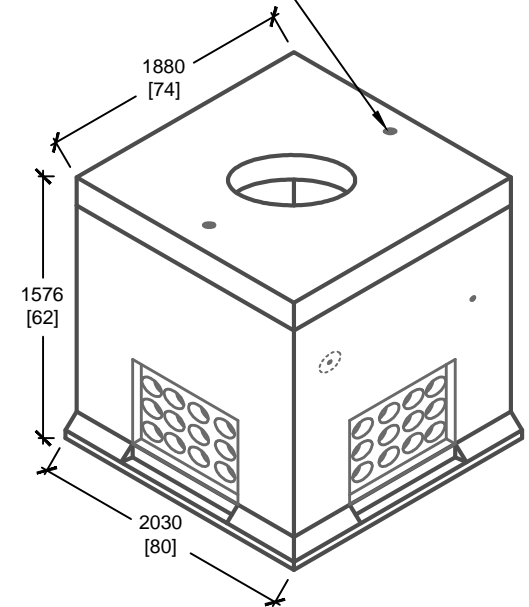


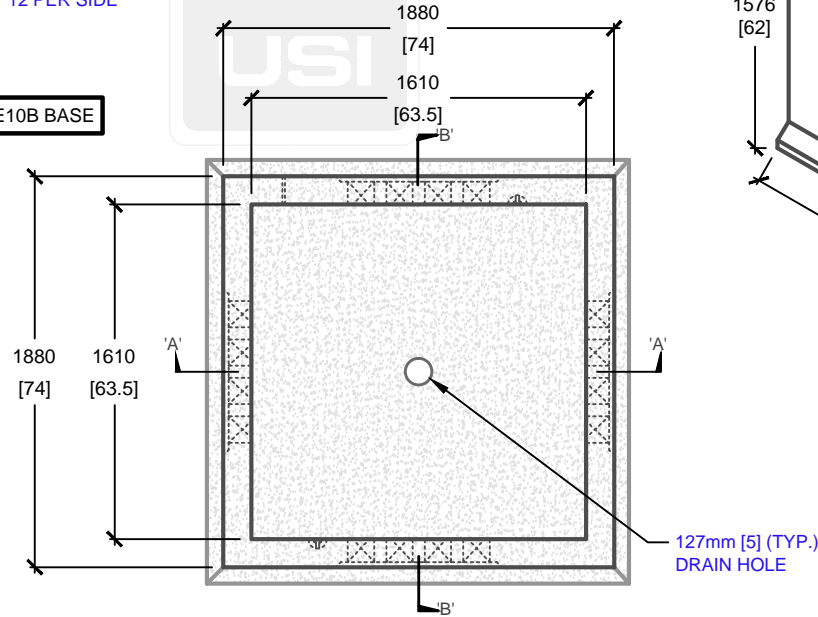
**CROSS SECTION 'B'**



SWIFT LIFT HOOK SYSTEM  
(AS PER MANUFACTURERS SPECIFICATIONS)



**CROSS SECTION 'A'**



mm  
[Inches]  
ALL DIMENSIONS DEFAULT TO MILLIMETRES



**UTILITY STRUCTURES INC.**

61 BONGARD AVE | OTTAWA, ON | K2E 6V2  
T: 613.225.6398 F: 613.225.1681 TF: 800.267.6466

[www.utilitystructures.com](http://www.utilitystructures.com)

**CONSTRUCTION DETAILS:**

- DESIGNED TO CL-625-ONT TRUCK LIVE LOADING AS PER **CSA S6-06**
- **E-10B BASE AND E-12 PAD ASSEMBLED**

• **CSA 23.4-05**

- 35 MPa (5000psi) AT 28 DAYS
- STRIPPING STRENGTH: MIN. 20 MPa(2900psi)
- 5-8% AIR ENTRAINMENT
- EXPOSURE CLASS: C-1
- REINFORCING: STEEL TO CSA CAN A23.1

**PRODUCT DETAILS:**

- E-10B BASE**
- (4) 127mm[5"] POLYLOK PIPESEAL WINDOWS (12 POLYLOKS PER WINDOW)
- CLOSED BOTTOM MANHOLE BASE
- E-12 PAD**
- (1) 686mm[27"] DIAMETER OPENING

**WEIGHT:**

- E-10B BASE: 3,950 kg / 8,690 lbs
- E-12 PAD: 1,700 kg / 3,740 lbs

• **CUSTOM OPTIONS AVAILABLE:**

- CUSTOM WINDOWS, OPENINGS, CABLE RACKS, PULLING EYES & MANHOLE HEIGHT

**PRODUCT CODE:**

**E-10B<sup>C</sup>/<sub>W</sub> E-12**  
6' X 6' ELECTRICAL MANHOLE BASE & PAD

**OUTSIDE DIMENSIONS:**

**1.58m(H) x 1880mm x 1880mm**

**TOTAL WEIGHT:**

**5,650 kg / 12,430 lbs**

**REVISION DATE:**

**SEPTEMBER 19, 2017**

**REV. # 2**