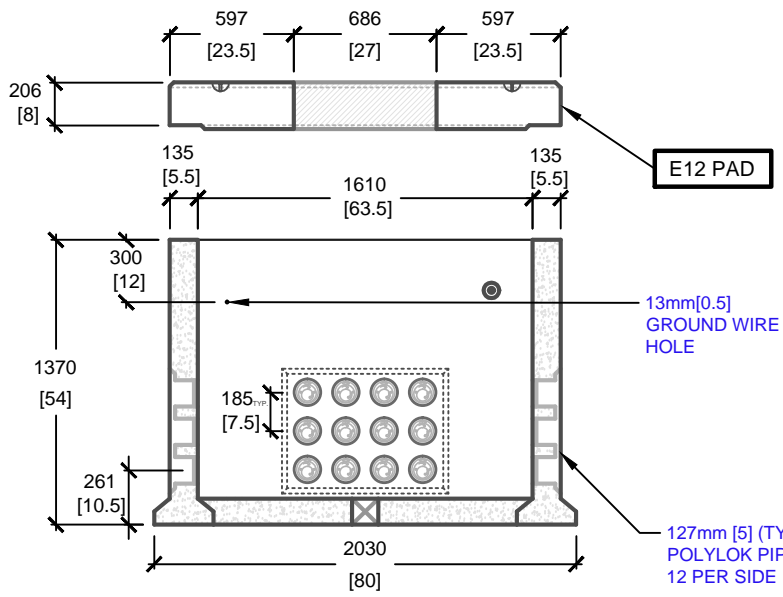
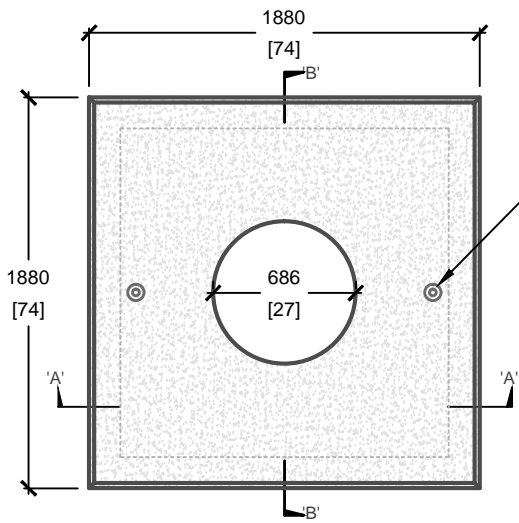


6' x 6' O.D. COMMUNICATION MANHOLE

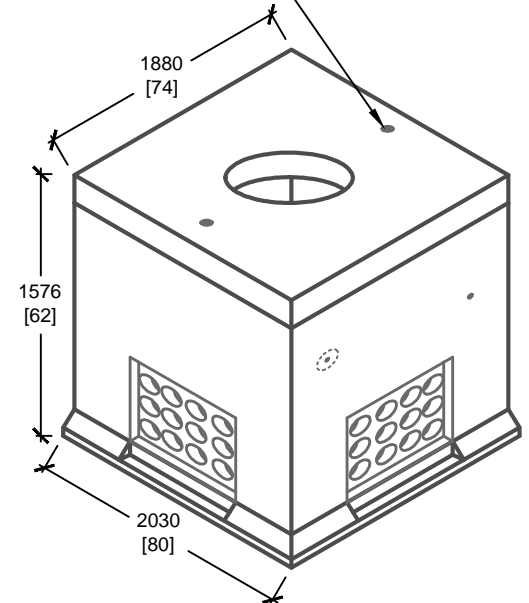


CROSS SECTION 'B'

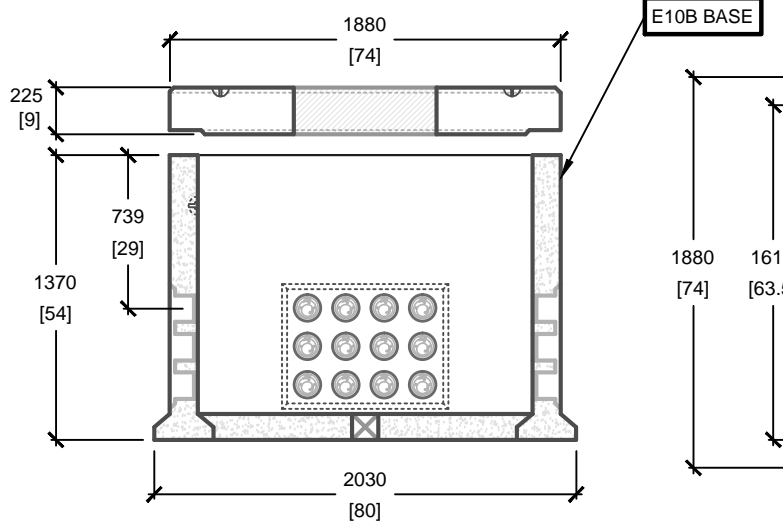


PLAN VIEW

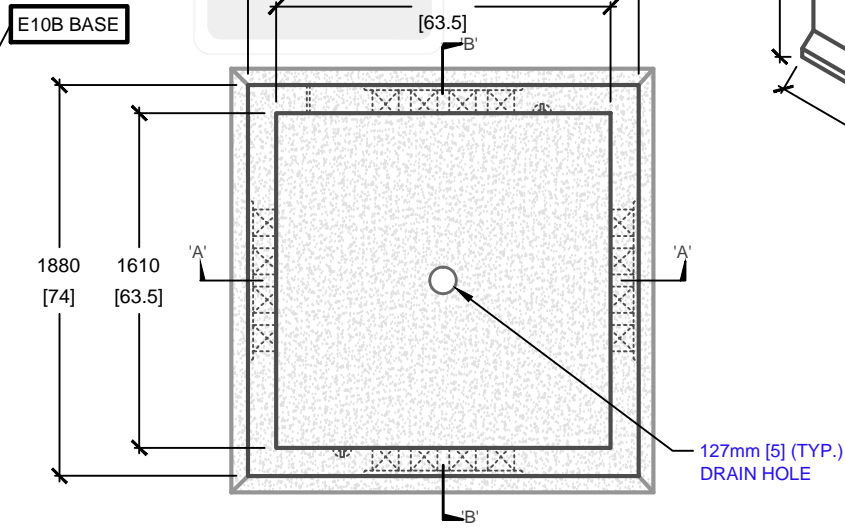
SWIFT LIFT HOOK SYSTEM
(AS PER MANUFACTURERS SPECIFICATIONS)



ISOMETRIC VIEW



CROSS SECTION 'A'



PLAN VIEW

127mm [5] (TYP.) DRAIN HOLE

mm [Inches]
ALL DIMENSIONS DEFAULT TO MILLIMETRES



UTILITY STRUCTURES INC.

61 BONGARD AVE | OTTAWA, ON | K2E 6V2
T: 613.225.6398 F: 613.225.1681 TF: 800.267.6466

www.utilitystructures.com

CONSTRUCTION DETAILS:

- DESIGNED TO CL-625-ONT TRUCK LIVE LOADING AS PER [CSA S6-06](#)
- E-10B BASE AND E-12 PAD ASSEMBLED

• **CSA 23.4-05**

- 35 MPa (5000psi) AT 28 DAYS
- STRIPPING STRENGTH: MIN. 20 MPa(2900psi)
- 5-8% AIR ENTRAINED
- EXPOSURE CLASS: C-1
- REINFORCING: STEEL TO CSA CAN A23.1

PRODUCT DETAILS:

E-10B BASE

- (4) 127mm[5"] POLYLOK PIPESEAL WINDOWS (12 POLYLOKS PER WINDOW)
- CLOSED BOTTOM MANHOLE BASE E-12 PAD
- (1) 686mm[27"] DIAMETER OPENING

WEIGHT:

E-10B BASE: 3,950 kg / 8,690 lbs
E-12 PAD: 1,700 kg / 3,740 lbs

• **CUSTOM OPTIONS AVAILABLE:**

- CUSTOM WINDOWS, OPENINGS, CABLE RACKS, PULLING EYES & MANHOLE HEIGHT

PRODUCT CODE:

E-10B^C/E-12
COMMUNICATION MANHOLE

INSIDE DIMENSIONS:

1.58m(H) x 1610mm x 1610mm [I.D.]

TOTAL WEIGHT:

5,650 kg / 12,430 lbs

REVISION DATE:

SEPTEMBER 21, 2017

REV. # 2