

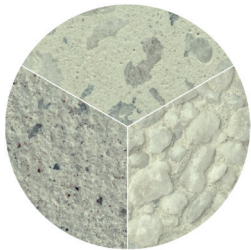
FINISHES

4 EXPOSED VW VENETIAN WHITE



THE EXPOSED FINISH

This surface finish is a two-stage process. Initially the pole form is coated with a “surface retarder”, which delays the hardening of the thin outer layer of the concrete. After the pole is cured, the pole surface is pressure washed with water to expose the aggregate. This finish is a rough finish, with large portions of the aggregate showing. No sealers are typically applied to this pole.



ABOUT OUR COLOURS & FINISHES

The decorative pole finish is not a veneer or a painted finish. The entire concrete matrix is a combination of specialty decorative colored aggregates, pigments, and cement. The entire pole is spun cast with this concrete mix. The combination of various concrete mix designs and surface finishes provides the client with over 36 standard finishes (custom colours available upon request) to choose from.

Select codes: **4** - **VW**

POSITION REFERENCE OF FINISH AND COLOUR CODE IN TYPICAL CATALOGUE NUMBER

EXAMPLE OF TYPICAL CATALOG NUMBER

