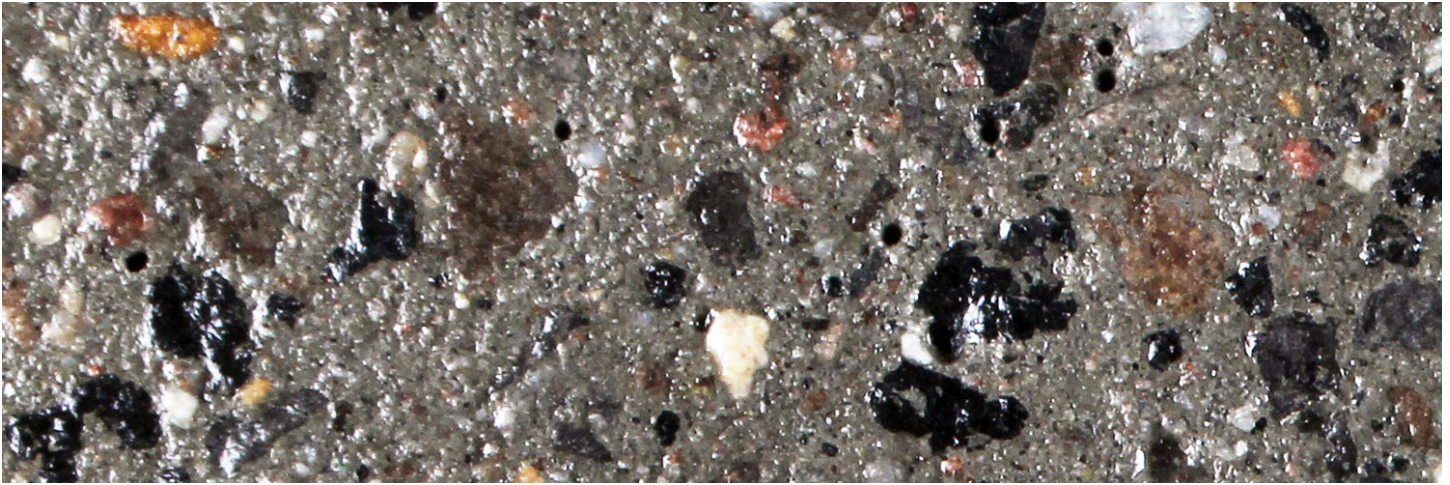


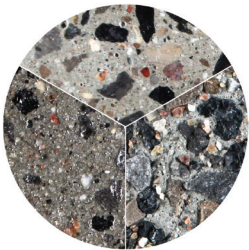
# FINISHES

## 3 ETCHED SP SALT & PEPPER



### THE ETCHED FINISH

This surface finish, as the name suggests, is a semi-rough finish. The etching of the pole surface is accomplished by sand blasting the face of the pole. The sand blasting removes the outer layer of mortar, exposing the decorative aggregates beneath. As with the polished finish, a clear acrylic sealer is applied to enhance the look.



### ABOUT OUR COLOURS & FINISHES

The decorative pole finish is not a veneer or a painted finish. The entire concrete matrix is a combination of specialty decorative colored aggregates, pigments, and cement. The entire pole is spun cast with this concrete mix. The combination of various concrete mix designs and surface finishes provides the client with over 36 standard finishes (custom colours available upon request) to choose from.

Select codes: **3** - **SP**

### POSITION REFERENCE OF FINISH AND COLOUR CODE IN TYPICAL CATALOGUE NUMBER

EXAMPLE OF TYPICAL CATALOG NUMBER

