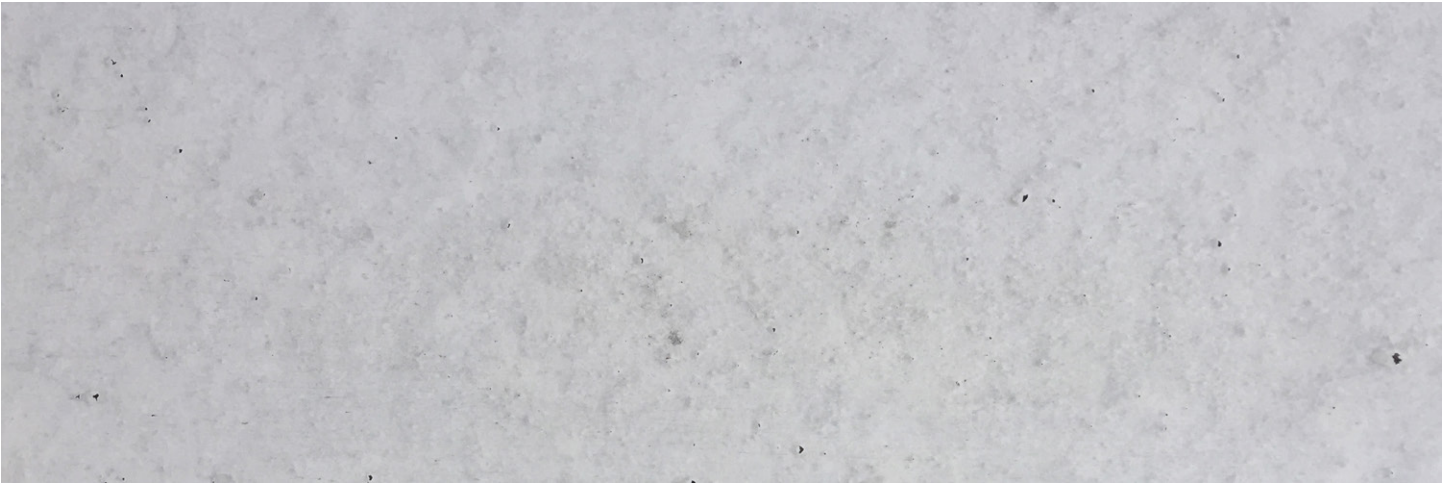


# FINISHES

## 1 MOLD PG PLAIN GREY



### THE MOLD FINISH

Our Plain Grey colour and Mold finish is our standard default colour & finish. This is typically used for non-decorative concrete poles. Natural aggregates and concrete make this a simple and economical choice. Typically used for our Utility Distribution, Sports Lighting, and Hampton streetlighting poles.

**NOTE:** The (1) Mold finish is only available in Plain Grey and is not available in our colour options.

Select codes: 1 - PG

### POSITION REFERENCE OF FINISH AND COLOUR CODE IN TYPICAL CATALOGUE NUMBER

EXAMPLE OF TYPICAL CATALOG NUMBER

