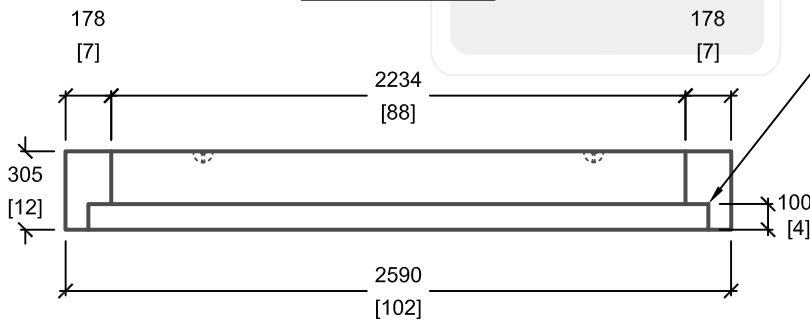
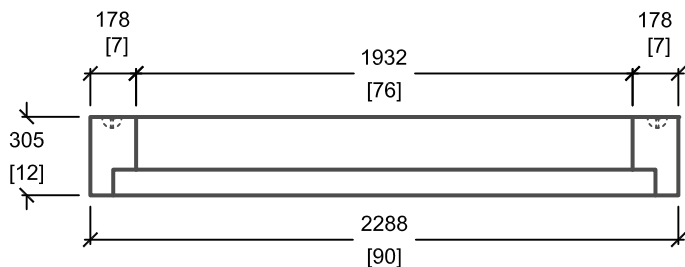


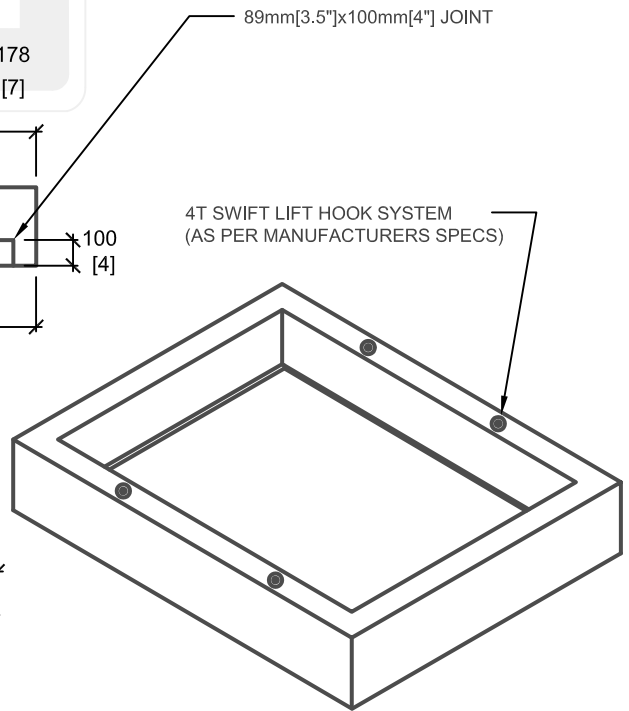
PLAN VIEW



CROSS SECTION 'A'



CROSS SECTION 'B'



ISOMETRIC VIEW

mm
[Inches]
ALL DIMENSIONS DEFAULT TO MILLIMETRES



UTILITY STRUCTURES INC.

61 BONGARD AVE | OTTAWA, ON | K2E 6V2
T: 613.225.6398 F: 613.225.1681 TF: 800.267.6466

www.utilitystructures.com

CONSTRUCTION DETAILS:

- AS PER **HYDRO OTTAWA UCS0040**
- FOR USE WITH E-812SG HYDRO OTTAWA SWITCHGEAR MANHOLE
- 89mm[3.5"]x100mm[4"] JOINT TO LOCK INTO E-812SG MANHOLE
- SWITCHGEAR MODEL 422, 29KV S&C ELECTRIC

- CSA 23.4-05
- 35 MPa (5000psi) AT 28 DAYS
- STRIPPING STRENGTH: MIN. 20 MPa(2900psi)
- 5-8% AIR ENTRAINED
- EXPOSURE CLASS: C-1
- REINFORCING: STEEL TO CSA CAN A23.1

PRODUCT CODE:

S-812

SWITCHGEAR SPACER FOR E-812SG MH

DIMENSIONS:

0.3m(H) X 2288mm x 2590mm

ESTIMATED WEIGHT:

1,200 kg / 2,640 lbs

REVISION DATE:

JUNE 17, 2015

REV. #13