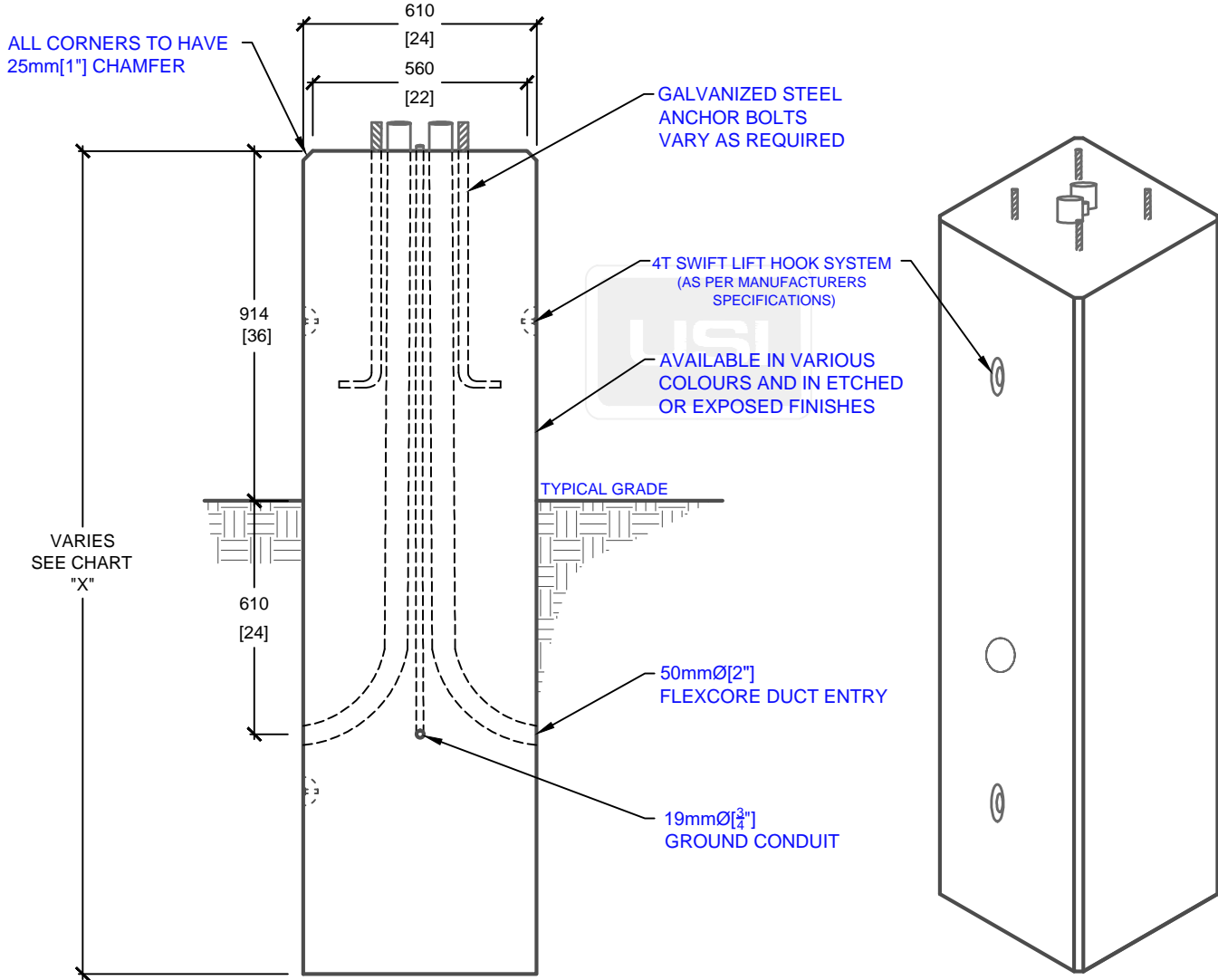


| PRODUCT CODE | POLE HEIGHT (ft.) | BASE BURIAL DEPTH (ft.) | OVERALL LENGTH "X" (ft.) | WEIGHT (kg/lbs.) |
|--------------|----------------------|----------------------------|-----------------------------|---------------------|
| P-53-24 (8) | 10-15 | 5 | 8 | 2,180kg / 4,796lbs |
| P-53-24 (9) | 16-25 | 6 | 9 | 2,450kg / 5,390lbs |
| P-53-24 (10) | 26-35 | 7 | 10 | 2,725kg / 5,995lbs |

BOLT CIRCLE DIAMETER AS REQUIRED

PLAN VIEW



SIDE ELEVATION

ISOMETRIC VIEW

mm
[Inches]
ALL DIMENSIONS DEFAULT TO MILLIMETRES



UTILITY STRUCTURES INC.

61 BONGARD AVE | OTTAWA, ON | K2E 6V2
T: 613.225.6398 F: 613.225.1681 TF: 800.267.6466

www.utilitystructures.com

CONSTRUCTION DETAILS:

- ACCOMMODATES VARIOUS POLE HEIGHTS
- AVAILABLE IN VARIOUS COLOURS & FINISHES
- ADJUSTABLE BOLT CIRCLE DIAMETER
- BOLT CIRCLE DIAMETER: 150mm[6"] TO 406mm[16"]

- CSA 23.4-05
- 45 MPa (6525psi) AT 28 DAYS
- STRIPPING STRENGTH: MIN. 20 MPa(2900psi)
- 5-8% AIR ENTRAINED
- EXPOSURE CLASS: C-1
- REINFORCING: STEEL TO CSA CAN A23.1

PRODUCT CODE:

P-53-24 (H)

24" SQUARE PARKING LOT POLE BASE

DIMENSIONS:

VARIES(H) X 610mm X 610mm

TOTAL WEIGHT:

VARIES

REVISION DATE:

JULY 31, 2018

REV. # 2