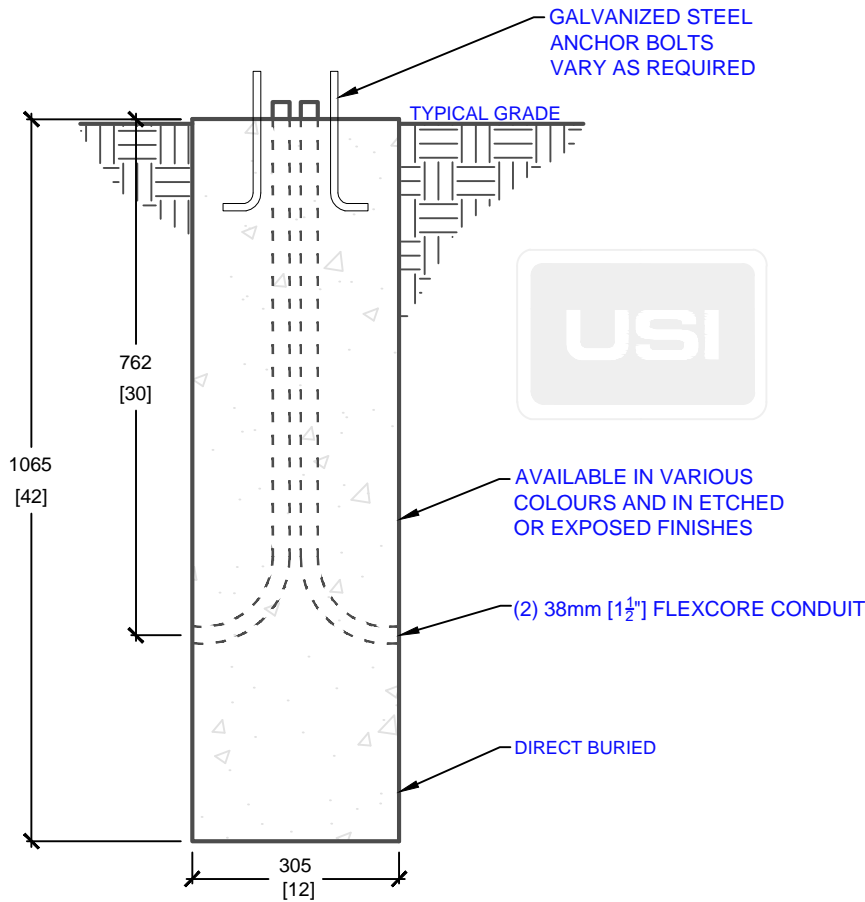


BOLT CIRCLE DIAMETER AS REQUIRED

**PLAN VIEW**



GALVANIZED STEEL ANCHOR BOLTS VARY AS REQUIRED

TYPICAL GRADE

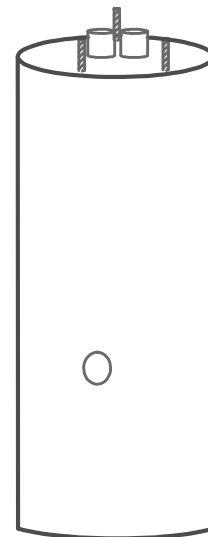


AVAILABLE IN VARIOUS COLOURS AND IN ETCHED OR EXPOSED FINISHES

(2) 38mm [1 1/2"] FLEXCORE CONDUIT

DIRECT BURIED

**SIDE ELEVATION**



**ISOMETRIC**

mm [Inches]  
ALL DIMENSIONS DEFAULT TO MILLIMETRES



**UTILITY STRUCTURES INC.**

61 BONGARD AVE | OTTAWA, ON | K2E 6V2  
T: 613.225.6398 F: 613.225.1681 TF: 800.267.6466

[www.utilitystructures.com](http://www.utilitystructures.com)

**CONSTRUCTION DETAILS:**

- ACCOMMODATES VARIOUS BOLLARD HEIGHTS
- AVAILABLE IN VARIOUS COLOURS & FINISHES
- ADJUSTABLE BOLT CIRCLE DIAMETER
- BOLT CIRCLE DIAMETER: 125mm[5"] TO 254mm[10"]

- CSA 23.4-05
- 35 MPa (5000psi) AT 28 DAYS
- STRIPPING STRENGTH: MIN. 20 MPa(2900psi)
- 5-8% AIR ENTRAINED
- EXPOSURE CLASS: C-1
- REINFORCING: STEEL TO CSA CAN A23.1

**PRODUCT CODE:**

**P-50-12**

12" DIA. ROUND BOLLARD BASE

**DIMENSIONS:**

**1.06m(H) X 305mm Dia.**

**TOTAL WEIGHT:**

**91 kg / 200 lbs**

**REVISION DATE:**

**JULY 31, 2018**

**REV. # 2**