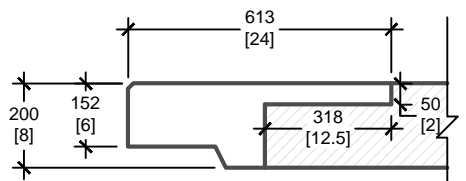
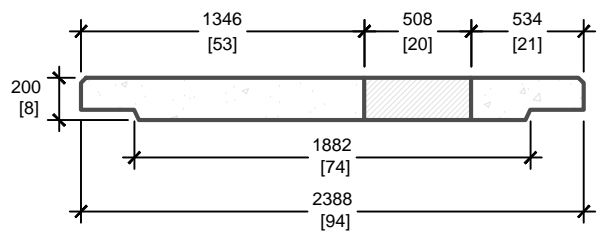


LOAD REQUIREMENTS	
DISTRIBUTED LATERAL LOAD	25 kN/m ²
TOP SLAB DISTRIBUTED LOAD	60 kN/m ²
TOP SLAB POINT LOAD	70 kN

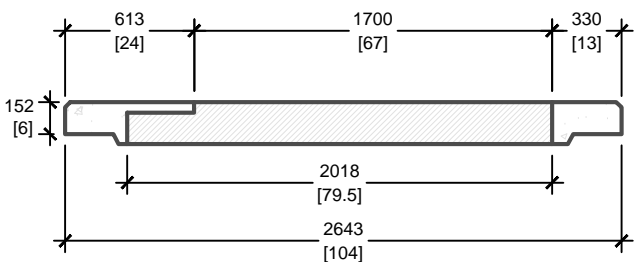
KNOCKOUT IS NOT STRUCTURAL AND THEREFORE CANNOT TAKE ANY LOAD



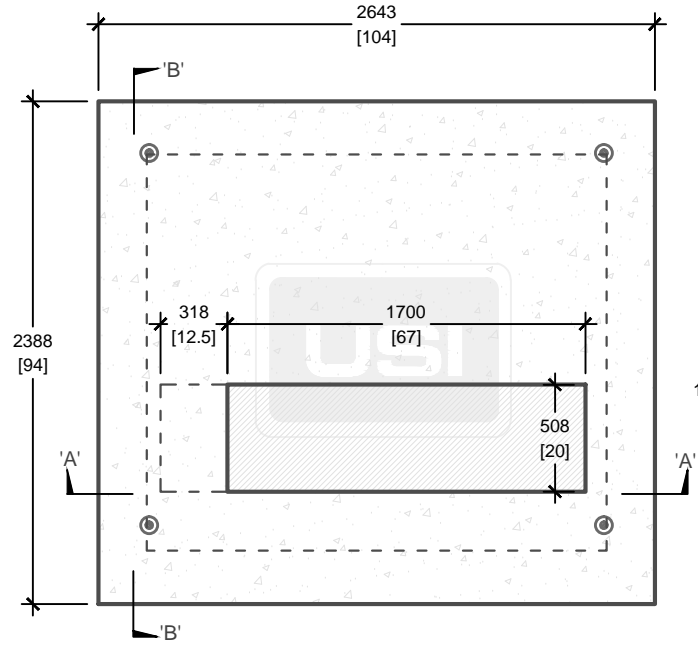
KNOCKOUT VIEW



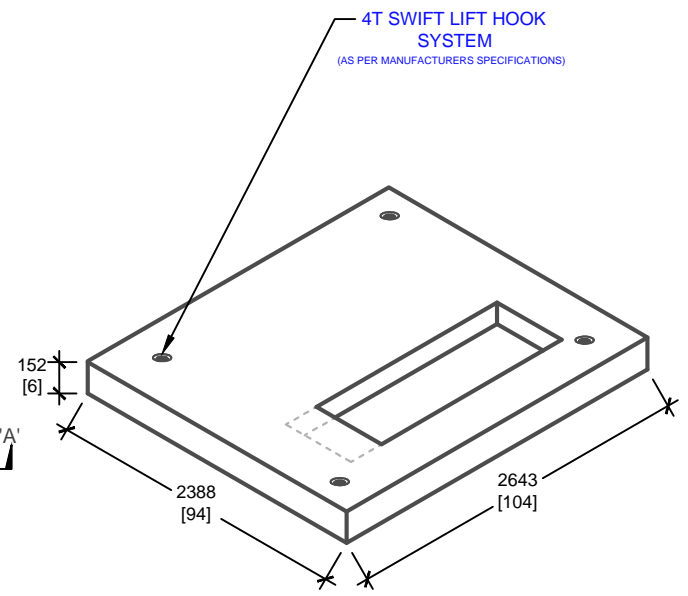
CROSS SECTION 'B'



CROSS SECTION 'A'



PLAN VIEW



ISOMETRIC VIEW

mm
[Inches]
ALL DIMENSIONS DEFAULT TO MILLIMETRES



UTILITY STRUCTURES INC.
61 BONGARD AVE | OTTAWA, ON | K2E 6V2
T: 613.225.6398 F: 613.225.1681 TF: 800.267.6466
www.utilitystructures.com

- CONSTRUCTION DETAILS:**
- REFERENCE **HYDRO OTTAWA UCS0041**
 - FOR USE WITH **E-812SG** HYDRO OTTAWA SWITCHGEAR MANHOLE
 - SWITCHGEAR MODEL 422, 29KV S&C ELECTRIC
- CSA 23.4**
- 35 MPa (5000psi) AT 28 DAYS
 - STRIPPING STRENGTH: MIN. 20 MPa(2900psi)
 - 5-8% AIR ENTRAINED
 - EXPOSURE CLASS: C-1
 - REINFORCING: STEEL TO CSA CAN A23.1

- PRODUCT DETAILS:**
- **MULTI-PURPOSE PAD OPENING:**
 - 508mm[20"] x 1700mm[67"]
 - 508mm[20"] x 2018mm[79.5"]
 - **CUSTOM OPTIONS AVAILABLE:**
 - CUSTOM OPENINGS

PRODUCT CODE:	E-812TP
	SWITCHGEAR PAD FOR E-812SG MH
OUTSIDE DIMENSIONS:	0.2m(H) x 2388mm x 2643mm
TOTAL WEIGHT:	2,500 kg / 5,500 lbs
REVISION DATE:	SEPTEMBER 18, 2017
	REV. # 11