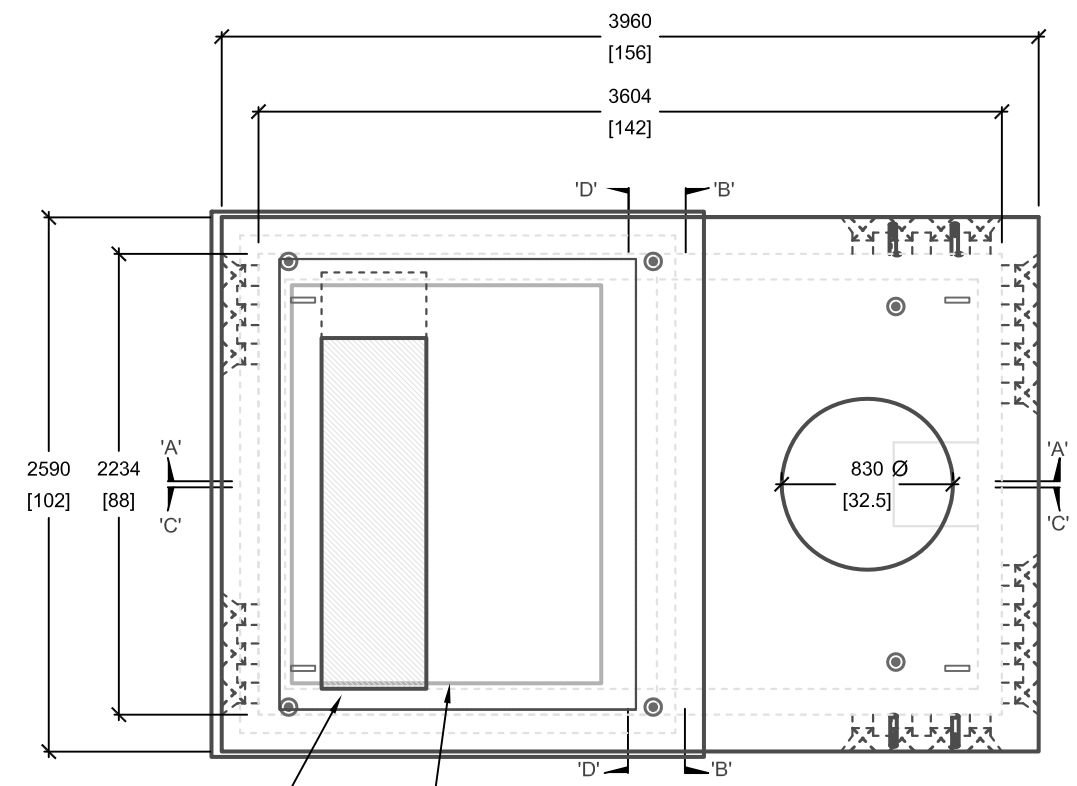
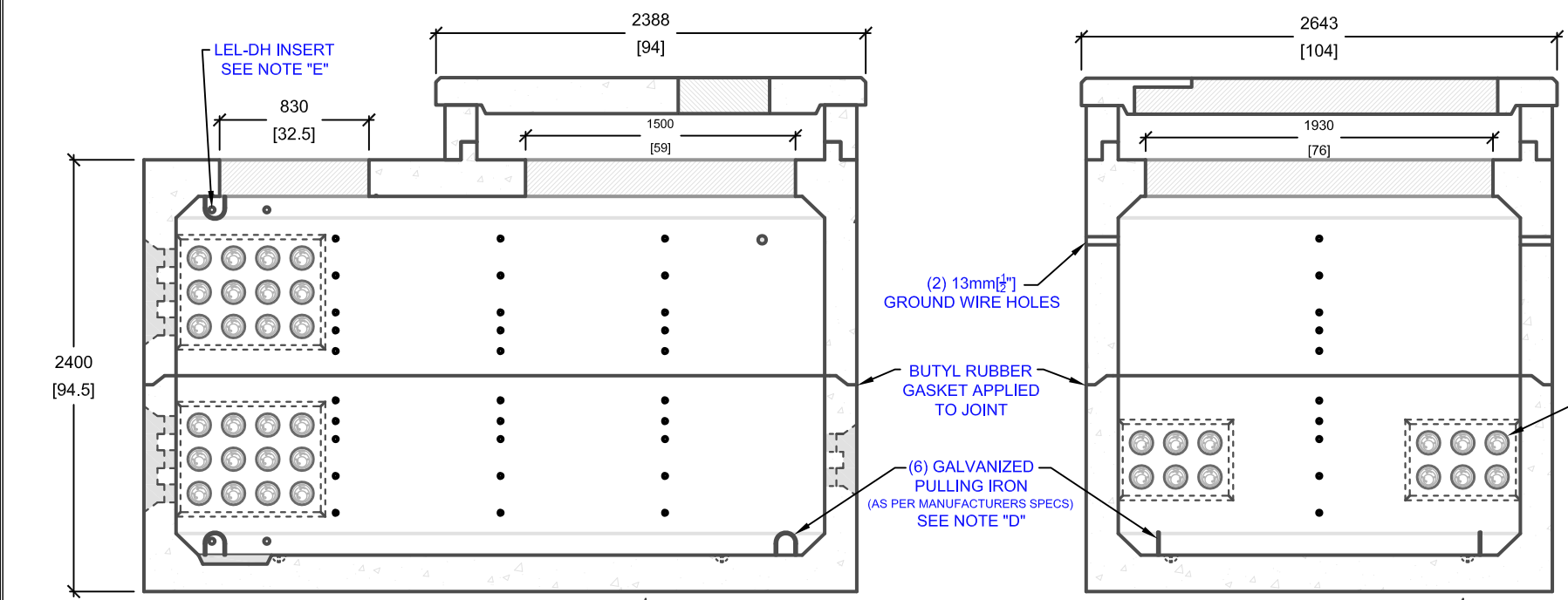


CROSS SECTION 'A'

CROSS SECTION 'B'

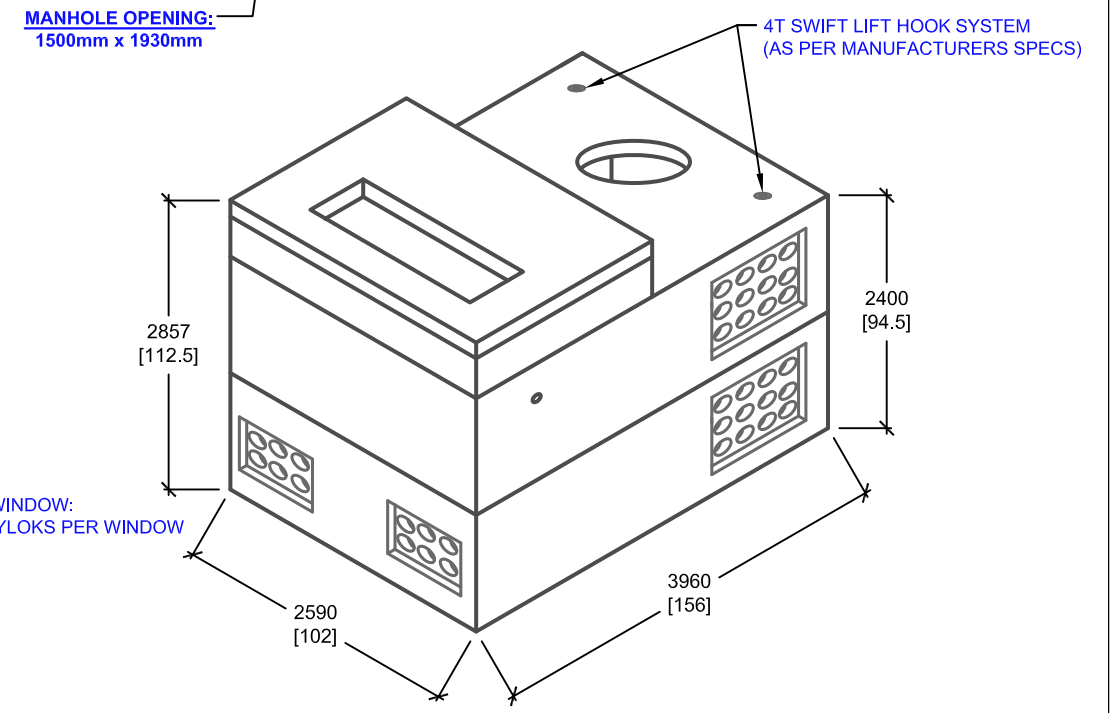


PLAN VIEW



CROSS SECTION 'C'

CROSS SECTION 'D'



UTILITY STRUCTURES INC.
 61 BONGARD AVE | OTTAWA, ON | K2E 6V2
 T: 613.225.6398 F: 613.225.1681 TF: 800.267.6466
www.utilitystructures.com

CONSTRUCTION DETAILS:

- AS PER **HYDRO OTTAWA UCS0039**
- DESIGNED TO CL-625-ONT TRUCK LIVE LOADING AS PER CSA S6-06
- CSA 23.4-05
- 35 MPa (5000psi) AT 28 DAYS
- STRIPPING STRENGTH: MIN. 20 MPa(2900psi)
- 5-8% AIR ENTRAINED
- EXPOSURE CLASS: C-1
- REINFORCING: STEEL TO CSA CAN A23.1

NOTES:

- (8) 127mm[5"] POLYLOK PIPESEAL WINDOWS (12 POLYLOKS PER WINDOW)
- (2) 127mm[5"] POLYLOK PIPESEAL WINDOWS (6 POLYLOKS PER WINDOW)
- (1) 400mm[16"] x 400mm[16"] SUMP BOX
- (6) GALVANIZED PULLING IRONS
- (4) 32mm[1 1/4"] LEL-DH INSERTS SPACED AT 300mm[12"] CENTRE ON CENTRE
- (80) 13mm[1/2"] CONCRETE INSERTS

PRODUCT DETAILS:

- 1500mm[59"] x 1930mm[76"] CABLE OPENING IN TOP OF MANHOLE
- INSIDE DIMENSIONS: 1.98m[78"](H) x 2234mm[88"] x 3604mm[142"]
- OUTSIDE DIMENSIONS: 2.4m[94.5"](H) x 2590mm[102"] x 3960mm[156"]
- ESTIMATED WEIGHTS:
 - MANHOLE TOP: 8,700 kg / 19,140 lbs
 - MANHOLE BASE: 10,000 kg / 22,000 lbs
 - S-812 SPACER: 1,200 kg / 2,640 lbs
 - E-812TP PAD: 2,500 kg / 5,500 lbs

INSTALLATION NOTES:

- SPACER DETAILS: SEE DRAWING S-812
- PAD DETAILS: SEE DRAWING E-812TP
- TRANSFORMER TO BE INSTALLED AS PER MANUFACTURERS SPECIFICATIONS
- MAXIMUM WEIGHT OF TRANSFORMER TO BE: 1365kg / 3000 lbs.
- SWITCHGEAR MODEL 422, 29KV S&C ELECTRIC
- HEIGHT OF TRANSFORMER TO BE LESS THAN HALF OF THE WIDTH.
- MINIMUM SOIL BEARING CAPACITY TO BE 100kpa (TO BE CONFIRMED ON SITE / BACKFILLING TO BE APPROVED BY A GEOTECHNICAL ENGINEER).
- SEISMIC CLASS OF SOIL TO BE 'D' OR BETTER.

PRODUCT CODE:
E-812SG
 8' x 12' ELECTRICAL SWITCHING MANHOLE

INSIDE DIMENSIONS:
2.4m(H) X 2234mm x 3604mm

ESTIMATED TOTAL WEIGHT:
22,400 kg / 49,280 lbs

REVISION DATE: AUGUST 7, 2015 **REV. # 21**