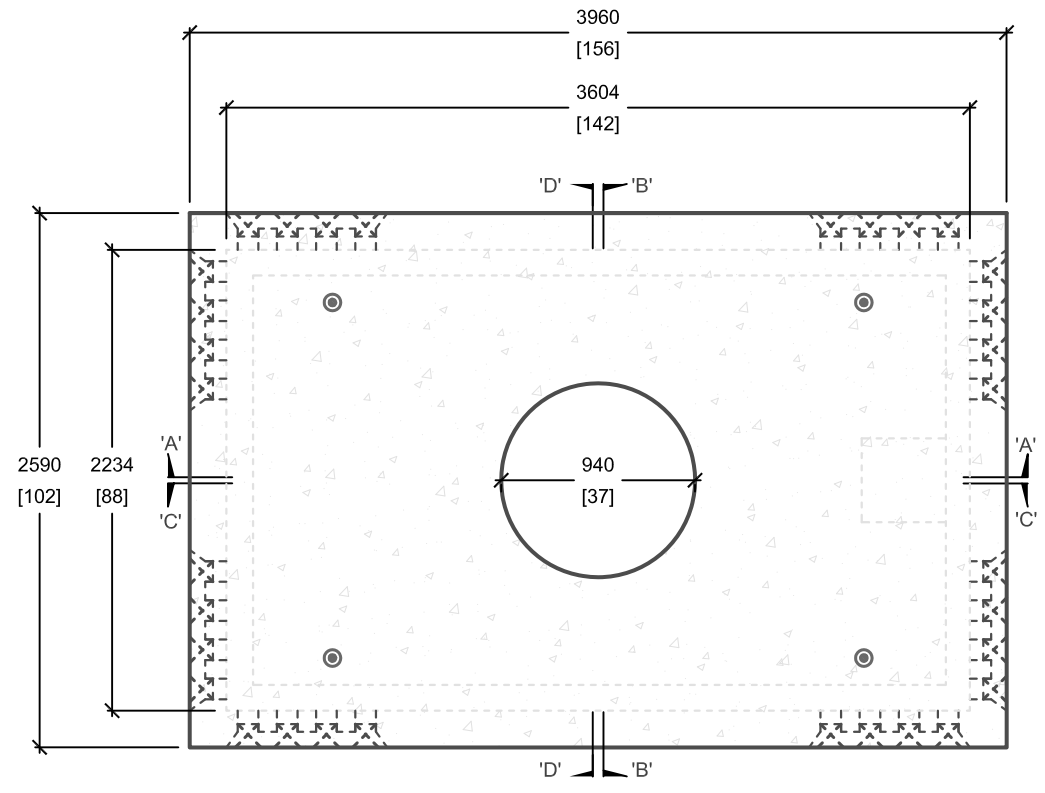
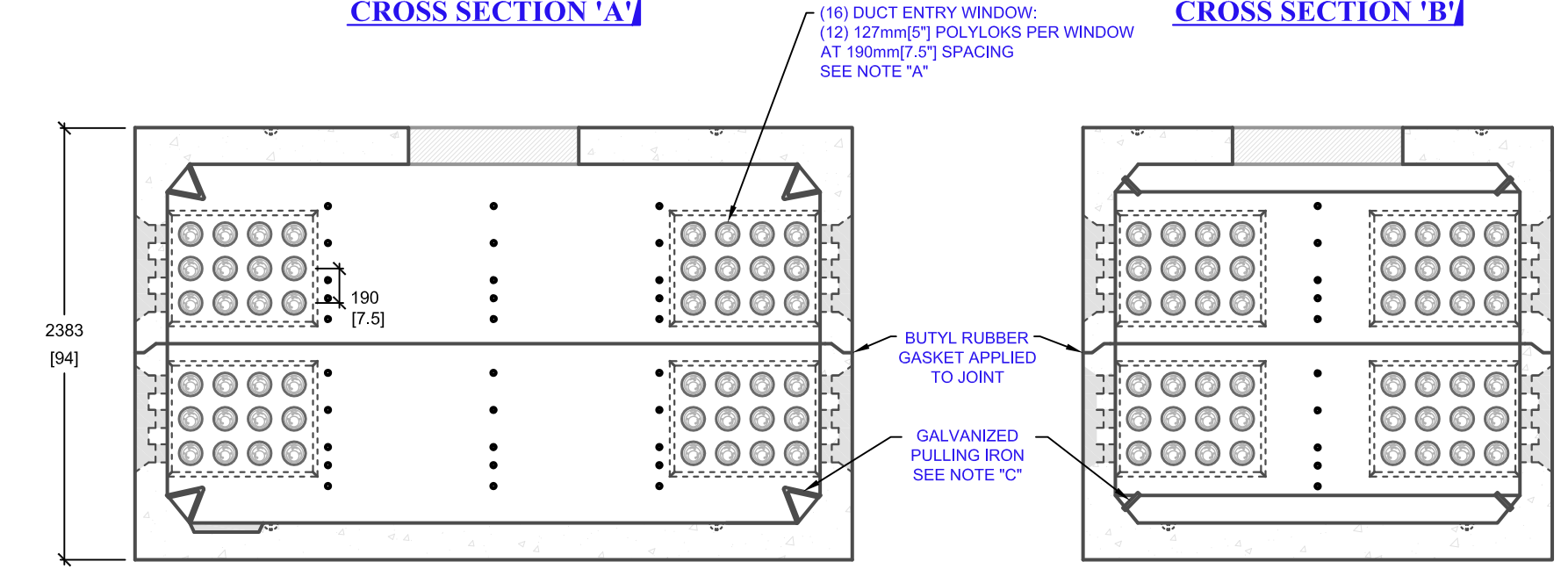


CROSS SECTION 'A'

CROSS SECTION 'B'

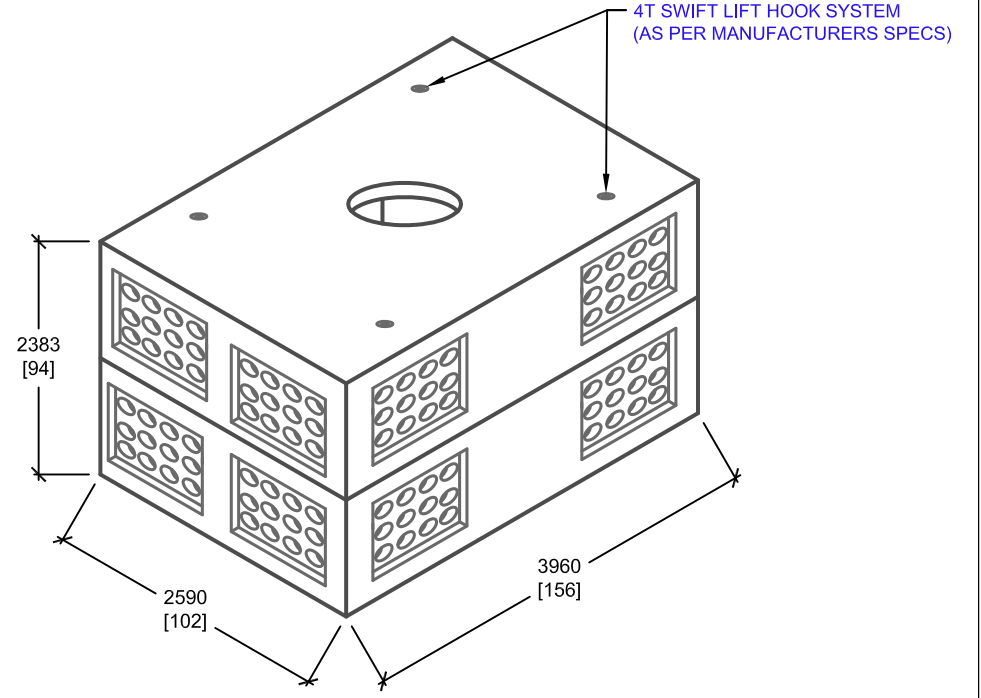


PLAN VIEW




CROSS SECTION 'C'

CROSS SECTION 'D'



NOTE: MINIMUM SOIL BEARING CAPACITY TO BE 100kpa (TO BE CONFIRMED ON SITE / BACKFILLING TO BE APPROVED BY A GEOTECHNICAL ENGINEER)

 UTILITY STRUCTURES INC. 61 BONGARD AVE OTTAWA, ON K2E 6V2 T: 613.225.6398 F: 613.225.1681 TF: 800.267.6466 www.utilitystructures.com	CONSTRUCTION DETAILS: • DESIGNED TO CL-625-ONT TRUCK LIVE LOADING AS PER CSA S6-06	NOTES: A. (8) 127mm[5"] POLYLOK PIPESEAL WINDOWS (12 POLYLOKS PER WINDOW) B. (1) 400mm[16"] x 400mm[16"] SUMP BOX C. (8) GALVANIZED PULLING IRONS D. (80) 13mm[½"] CONCRETE INSERTS	PRODUCT DETAILS: • INSIDE DIMENSIONS: 1.98m[78"](H) x 2234mm[88"] x 3604mm[142"] • OUTSIDE DIMENSIONS: 2.39m[94"](H) x 2590mm[102"] x 3960mm[156"] WEIGHTS: • TOP: 9,520 kg / 20,945 lbs • BASE: 9,900 kg / 21,780 lbs CUSTOM OPTIONS AVAILABLE: • CUSTOM WINDOWS, OPENINGS, CABLE RACKS, PULLING EYES & MANHOLE HEIGHT	ENGINEER APPROVAL:	PRODUCT CODE: <h1 style="text-align: center;">E-812MH</h1> 8' x 12' ELECTRICAL MANHOLE	
	• CSA 23.4-05 - 35 MPa (5000psi) AT 28 DAYS - STRIPPING STRENGTH: MIN. 20 MPa(2900psi) - 5-8% AIR ENTRAINED - EXPOSURE CLASS: C-1 • REINFORCING: STEEL TO CSA CAN A23.1					INSIDE DIMENSIONS: <h2 style="text-align: center;">2.39m(H) X 2234mm x 3604mm</h2>
						ESTIMATED TOTAL WEIGHT: <h2 style="text-align: center;">19,420 kg / 42,725 lbs</h2>
						REVISION DATE: JANUARY 25, 2018 REV. # 3