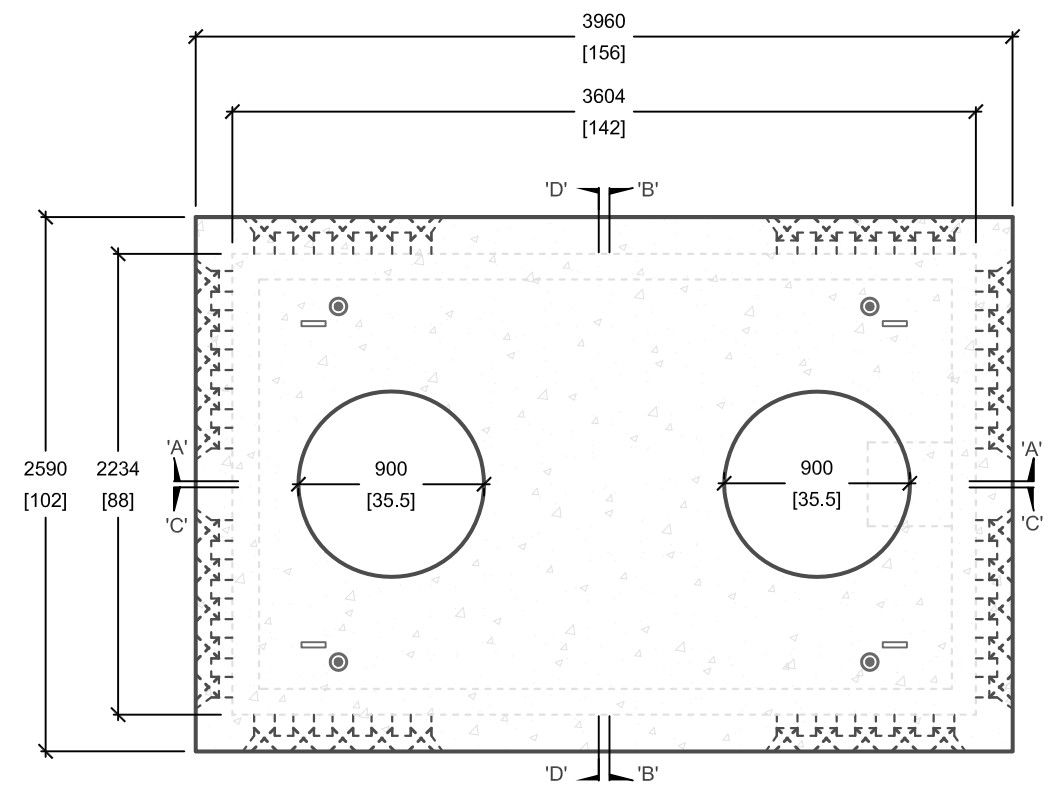


**CROSS SECTION 'A'**

**CROSS SECTION 'B'**



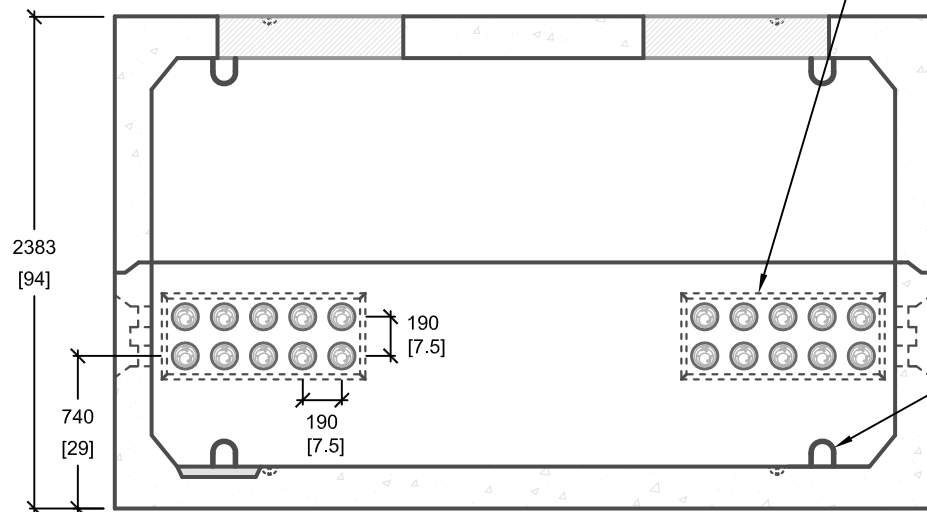
**PLAN VIEW**

(8) DUCT ENTRY WINDOW:  
(10) 127mm[5"] POLYLOKS PER WINDOW  
AT 190mm[7.5"] SPACING  
SEE NOTE "A"

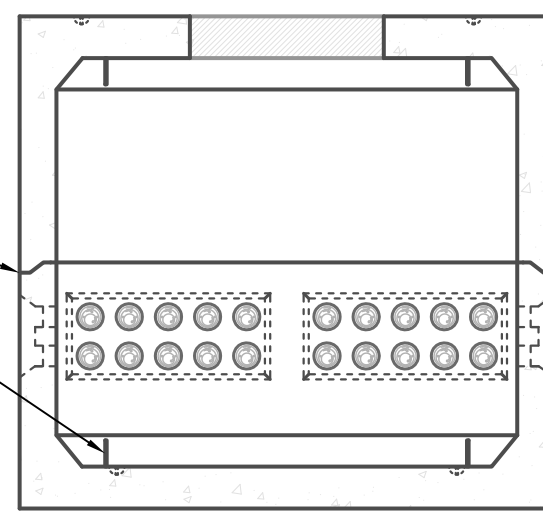
BUTYL RUBBER  
GASKET APPLIED  
TO JOINT

GALVANIZED  
PULLING IRON  
SEE NOTE "C"

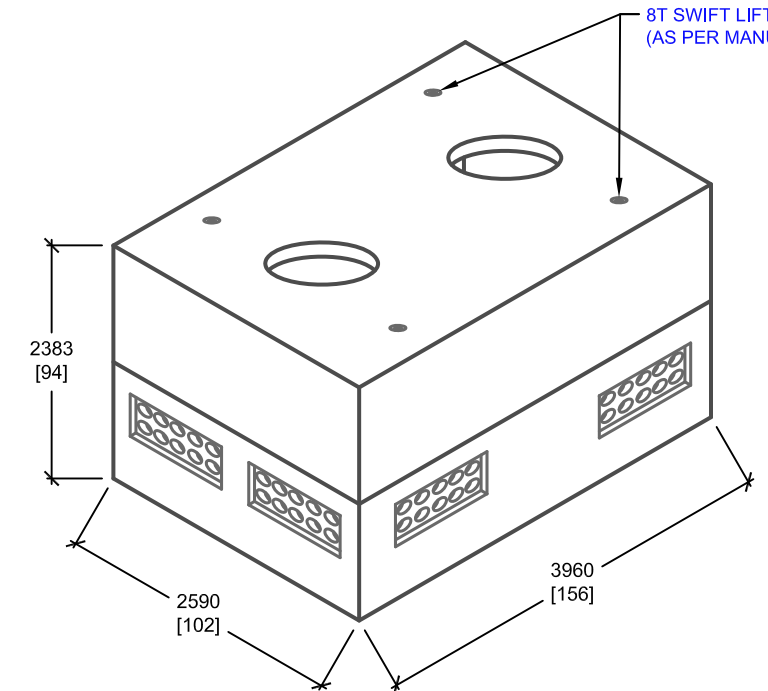
8T SWIFT LIFT HOOK SYSTEM  
(AS PER MANUFACTURERS SPECS)



**CROSS SECTION 'C'**



**CROSS SECTION 'D'**



NOTE: MINIMUM SOIL BEARING CAPACITY TO BE 100kpa (TO BE CONFIRMED ON SITE / BACKFILLING TO BE APPROVED BY A GEOTECHNICAL ENGINEER)



**UTILITY STRUCTURES INC.**

61 BONGARD AVE | OTTAWA, ON | K2E 6V2  
T: 613.225.6398 F: 613.225.1681 TF: 800.267.6466

[www.utilitystructures.com](http://www.utilitystructures.com)

**CONSTRUCTION DETAILS:**

- AS PER HYDRO ONE DU-09-106-0500
- DESIGNED TO CL-625-ONT TRUCK LIVE LOADING AS PER CSA S6-06

• CSA 23.4-05

- 35 MPa (5000psi) AT 28 DAYS
- STRIPPING STRENGTH: MIN. 20 MPa(2900psi)
- 5-8% AIR ENTRAINED
- EXPOSURE CLASS: C-1
- REINFORCING: STEEL TO CSA CAN A23.1

**NOTES:**

- A. (8) 127mm[5"] POLYLOK PIPESEAL WINDOWS (10 POLYLOKS PER WINDOW)
- B. (1) 400mm[16"] x 400mm[16"] SUMP BOX
- C. (8) GALVANIZED PULLING IRONS
- D. (1) 126mm[5"] DRAIN OUTLET KNOCKOUT

**PRODUCT DETAILS:**

- INSIDE DIMENSIONS: 1.98m[78"](H) x 2234mm[88"] x 3604mm[142"]
- OUTSIDE DIMENSIONS: 2.39m[94"](H) x 2590mm[102"] x 3960mm[156"]
- ESTIMATED WEIGHTS:  
MANHOLE TOP: 9,520 kg / 20,945 lbs  
MANHOLE BASE: 9,900 kg / 21,780 lbs

**PRODUCT CODE:**

**E-812 (HO)**  
8' x 12' ELECTRICAL MANHOLE

**INSIDE DIMENSIONS:**

**2.39m(H) X 2234mm x 3604mm**

**ESTIMATED TOTAL WEIGHT:**

**19,420 kg / 42,725 lbs**

**REVISION DATE:**

**DECEMBER 21, 2016**

**REV. # 2**