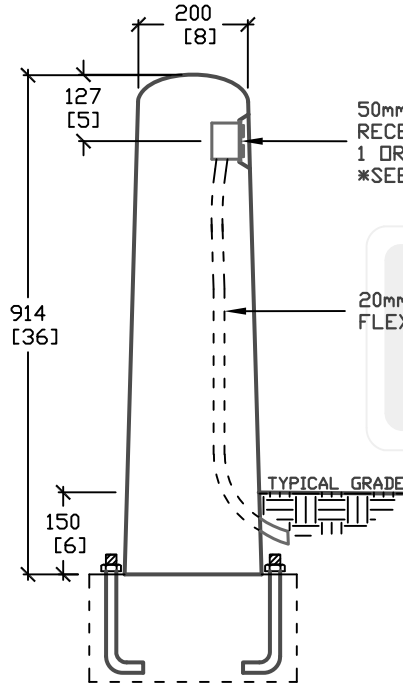


GALVANIZED PLATE  
6mm [0.25"] THICK

**BASE PLATE DETAIL**



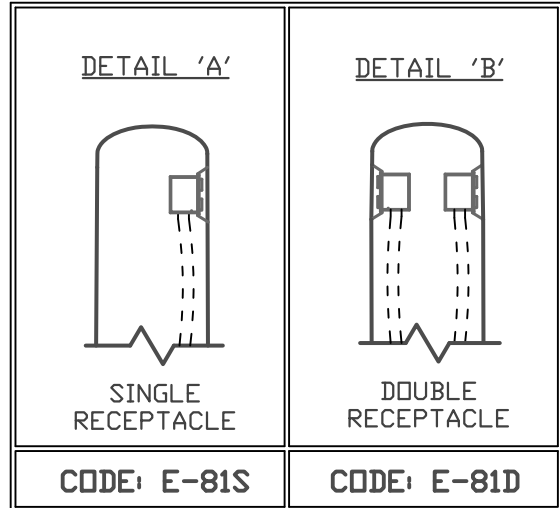
50mm x 83mm [2 x 3.25]  
RECEPTACLE BOX  
1 OR 2 AVAILABLE  
\*SEE DETAILS 'A' AND 'B'

20mm $\phi$  [0.75] PLASTIC  
FLEXCORE CONDUIT

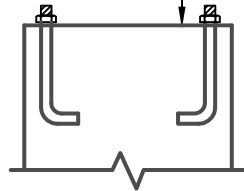


TYPICAL GRADE

**CROSS SECTION 'A'**  
E-81S SHOWN ABOVE



CONCRETE BASE  
AND ANCHOR  
BOLTS BY OTHERS



**FOUNDATION DETAIL**

ALL DIMENSIONS DEFAULT TO MILLIMETERS

mm  
[in.]



61 BONGARD AVE  
OTTAWA, ON,  
PH: 800.267.6466  
FAX: 613.225.1681

www.utilitystructures.com

**NOTES:**

AVAILABLE IN VARIOUS  
COLOURS AND FINISHES

\*CSA 23.4-05  
35MPa (5000psi) AT 28 DAYS  
6-8% AIR ENTRAINED

REV.#	MM/DD/YYYY	PREP.
2	FEB/24/2009	LRW
3	APRIL/16/2010	ICW

**E-81**

ROUND BASE MOUNTED  
PLUG-IN BOLLARD

WEIGHT = 105kg/225lbs

**.90m(H) x 200mm dia.**