

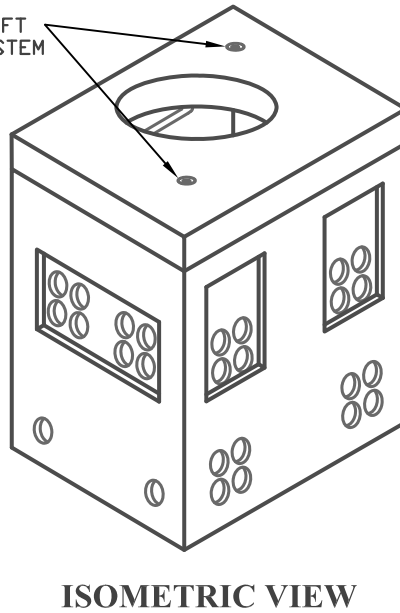
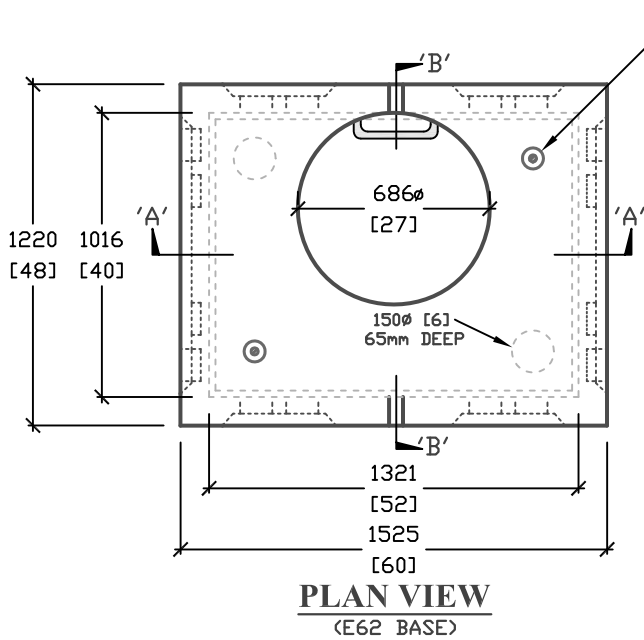
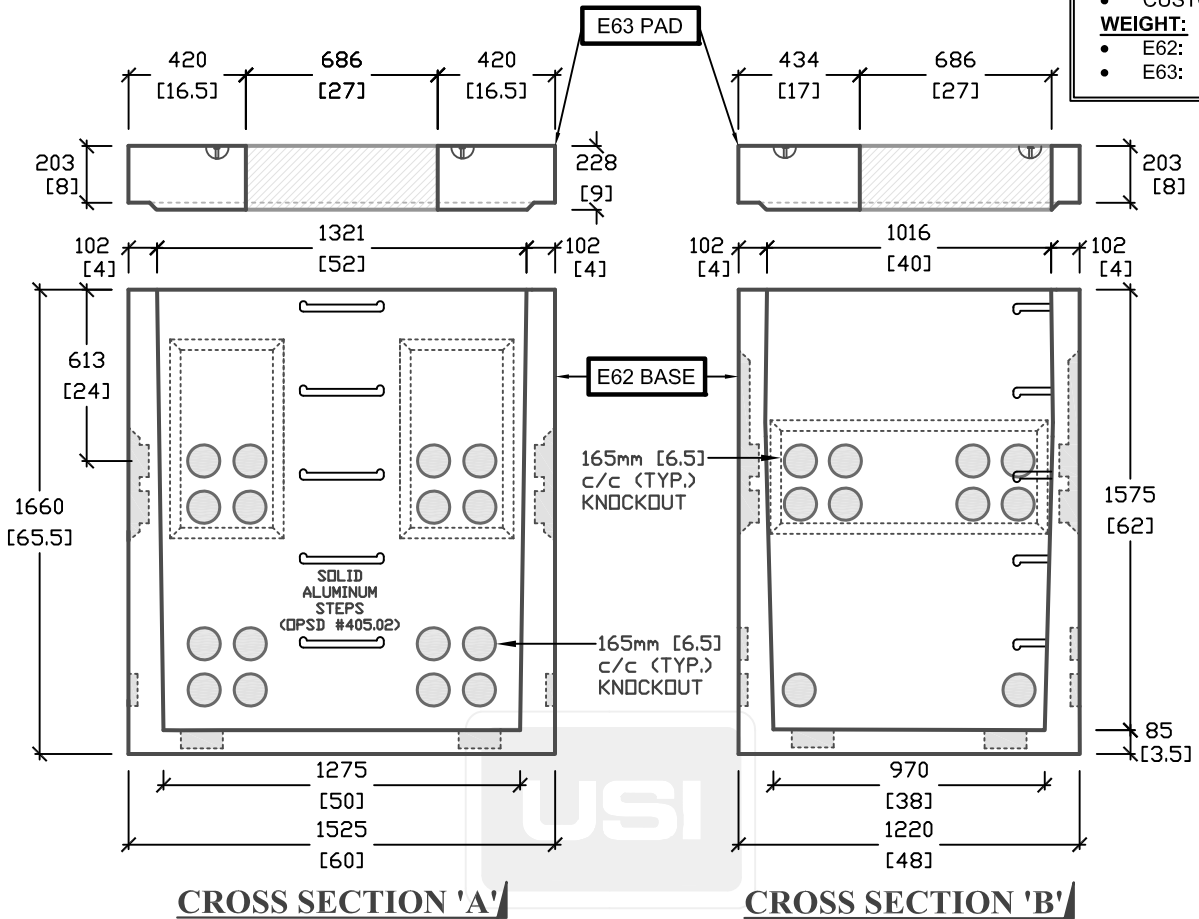
4' x 5' O.D. ELECTRICAL MANHOLE

OPTIONS AVAILABLE:

- PULLING EYES
- CABLE RACKS
- CUSTOM OPENINGS

WEIGHT:

- E62: 2150kg
- E63: 900kg



ALL DIMENSIONS DEFAULT TO MILLIMETERS

mm
[in.]



61 BONGARD AVE
OTTAWA, ON,
PH: 800.267.6466
FAX: 613.225.1681

E62 BASE & E63 PAD
DESIGNED TO CL-625-DNT TRUCK
LIVE LOADING AS PER CSA S6-06

*CSA 23.4-05
35MPa (5000psi) AT 28 DAYS
6-8% AIR ENTRAINED

E62^C / E63_W

ELECTRICAL MANHOLE

TOTAL WEIGHT = 3050kg

www.utilitystructures.com

REV.#	MM/DD/YYYY	PREP.
3	FEB/24/2009	EG
4	NOV/07/2013	EG

1.86m(H) x 1016mm x 1321mm (I.D.)