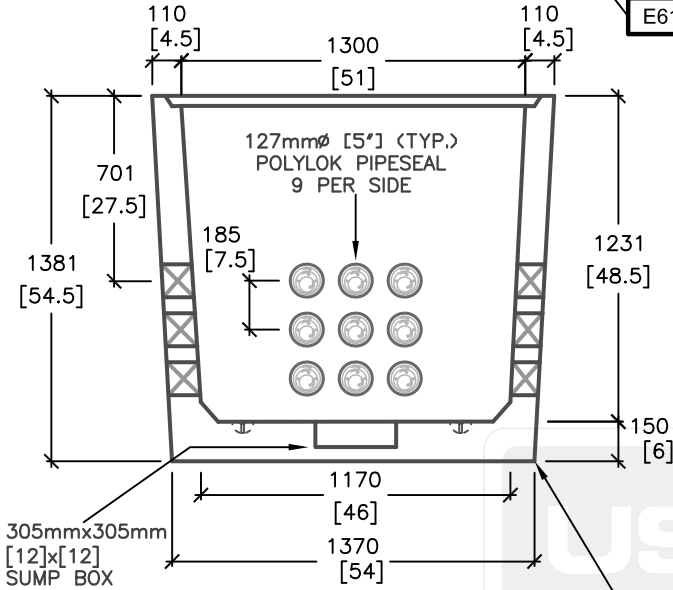
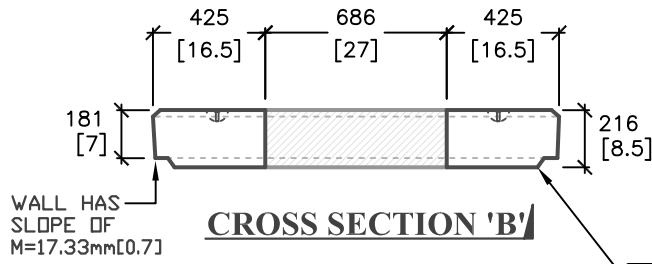
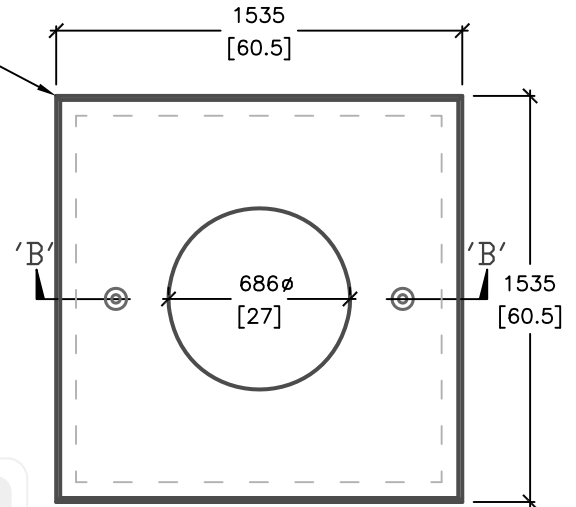


**5' x 5' O.D. COMMUNICATION MANHOLE**

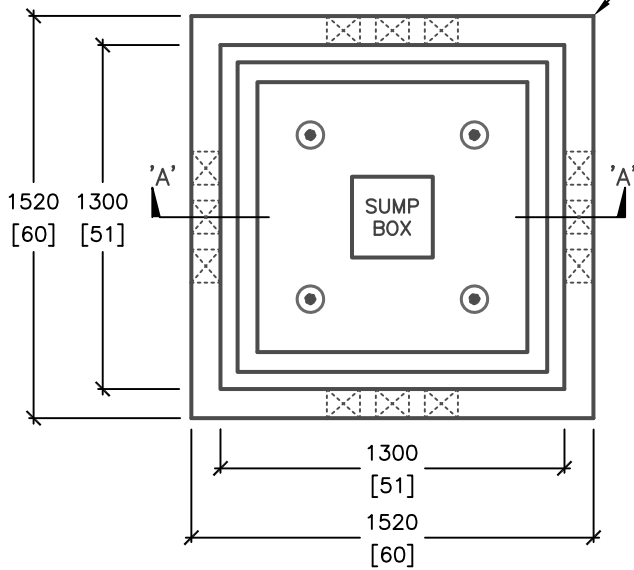
- OPTIONS AVAILABLE:**
- PULLING EYES
  - CABLE RACKS
  - CUSTOM OPENINGS
- WEIGHT:**
- E60: 2200kg
  - E61: 1100kg



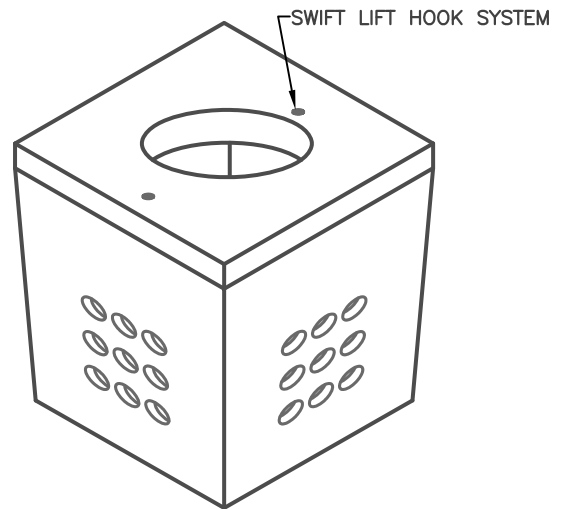
**E61 PAD**



**E60 BASE**



**PLAN VIEW (E61 PAD)**



**ISOMETRIC VIEW**

ALL DIMENSIONS DEFAULT TO MILLIMETERS

mm [in.]



61 BONGARD AVE  
OTTAWA, ON,  
PH: 800.267.6466  
FAX: 613.225.1681

E60 BASE & E61 PAD  
DESIGNED TO CL-625-ONT TRUCK  
LIVE LOADING AS PER CSA S6-06

\*CSA 23.4-05  
35MPa (5000psi) AT 28 DAYS  
6-8% AIR ENTRAINED

**E-60<sup>C</sup> /<sub>W</sub> E-61**

COMMUNICATION MANHOLE

TOTAL WEIGHT = 3300kg

www.utilitystructures.com

REV.#	MM/DD/YYYY	PREP.
3	OCT/16/2012	EG
4	OCT/07/2013	EG

**1.56m(H)x1300mmx1300mm (I.D.)**