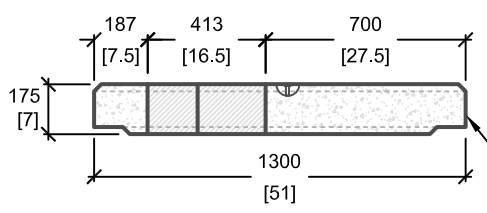
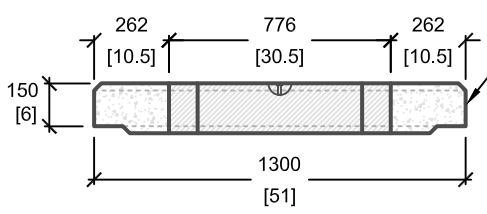


| LOAD REQUIREMENTS | |
|---------------------------|--------|
| DISTRIBUTED LATERAL LOAD | 25kN/m |
| TOP SLAB DISTRIBUTED LOAD | 60kN/m |
| TOP SLAB POINT LOAD | 70kN/m |

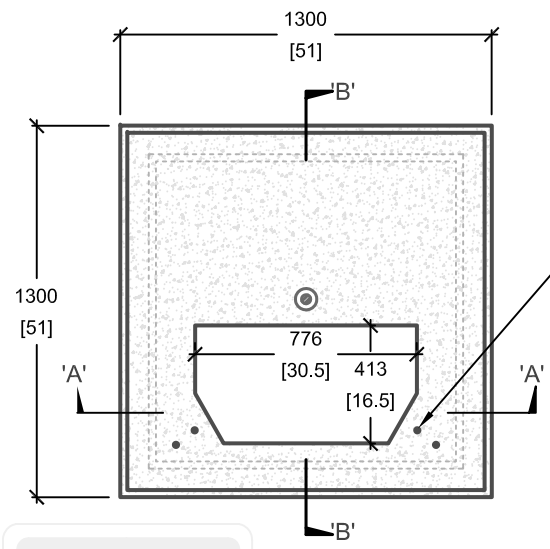


CROSS SECTION 'B'

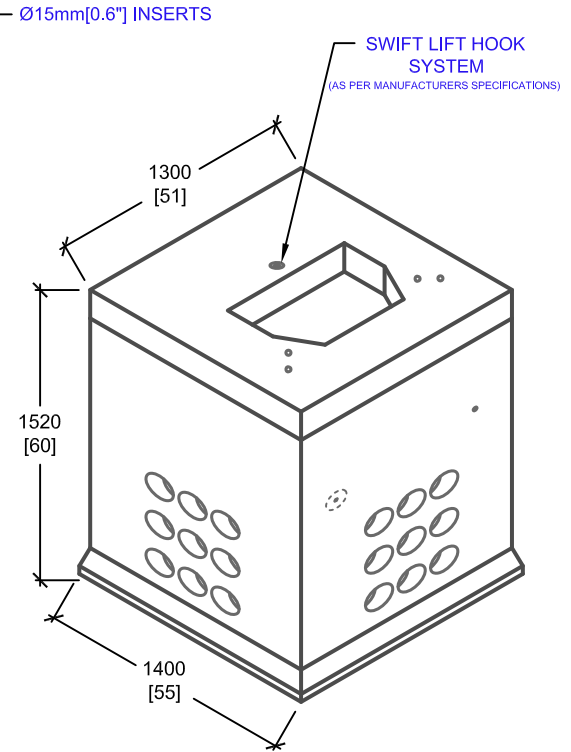
E7 PAD



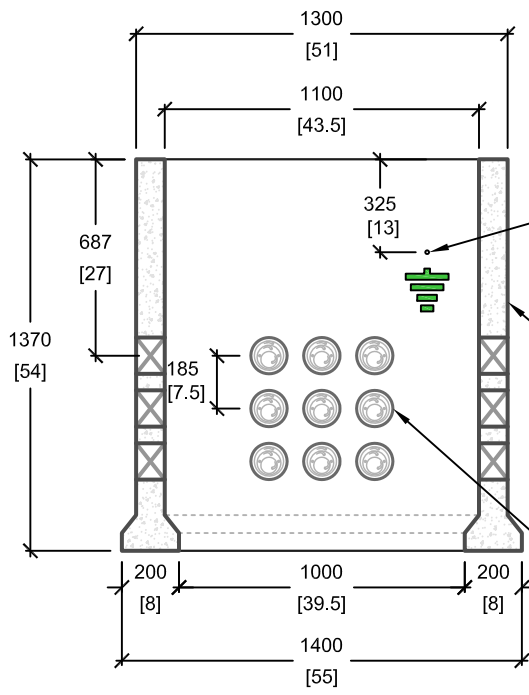
CROSS SECTION 'A'



PLAN VIEW

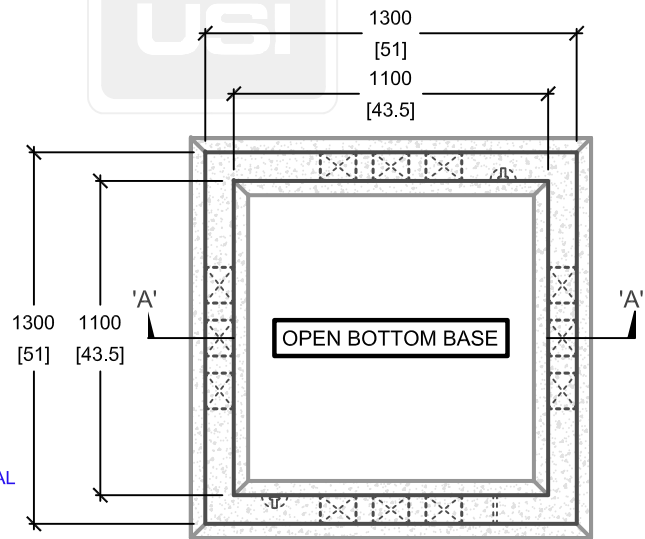


ISOMETRIC VIEW



CROSS SECTION 'A'

E6 BASE



mm [Inches]
ALL DIMENSIONS DEFAULT TO MILLIMETRES



UTILITY STRUCTURES INC.
61 BONGARD AVE | OTTAWA, ON | K2E 6V2
T: 613.225.6398 F: 613.225.1681 TF: 800.267.6466
www.utilitystructures.com

- CONSTRUCTION DETAILS:**
- REFERENCE **HYDRO OTTAWA UCS0003**
 - E-6 BASE AND E-7 PAD ASSEMBLED
- **CSA 23.4**
- 35 MPa (5000psi) AT 28 DAYS
 - STRIPPING STRENGTH: MIN. 20 MPa(2900psi)
 - 5-8% AIR ENTRAINED
 - EXPOSURE CLASS: C-1
 - REINFORCING: STEEL TO CSA CAN A23.1

- PRODUCT DETAILS:**
- (4) 127mm[5"] POLYLOK PIPESEAL WINDOWS (9 POLYLOKS PER WINDOW)
 - SINGLE PHASE BASE 25kVA TO 167kVA
 - CLOSED BOTTOM KINGSTON UTILITIES VERSION AVAILABLE(DWG# E-6B)
 - (4) 15mm[0.6"] INSERTS IN E-7 PAD
 - PAD OPENING: 776mm[30.5"] x 413mm[16"]
- CUSTOM OPTIONS AVAILABLE:**
- CUSTOM WINDOWS & OPENINGS

| | | |
|----------------------------|--|-----------------|
| PRODUCT CODE: | E-6^c / E-7_w | |
| | SINGLE PHASE TRANSFORMER BASE | |
| OUTSIDE DIMENSIONS: | 1.52m(H) x 1300mm x 1300mm | |
| TOTAL WEIGHT: | 1,815 kg / 4,000 lbs | |
| REVISION DATE: | SEPTEMBER 15, 2017 | REV. # 7 |