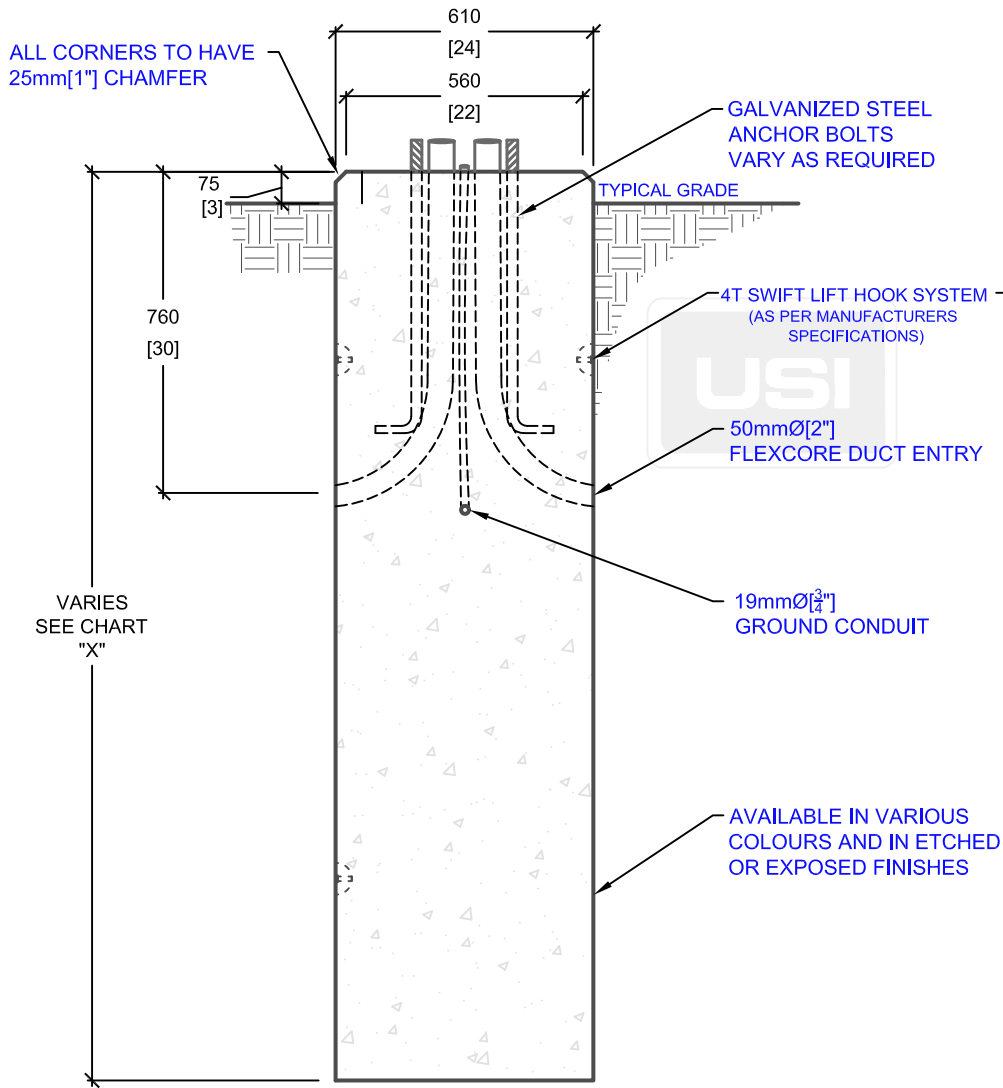
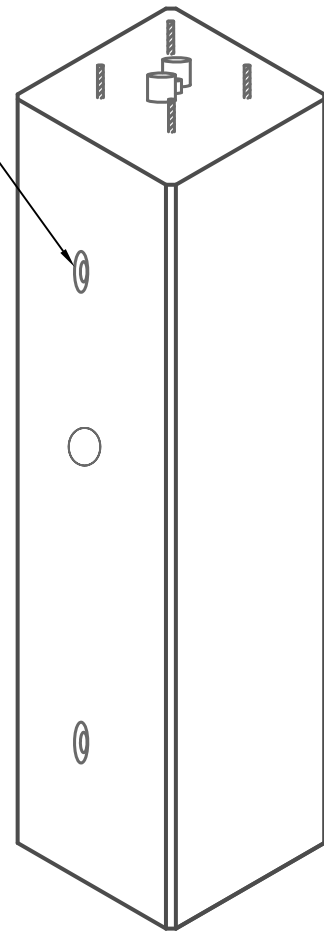


PRODUCT CODE	POLE HEIGHT (ft.)	BASE BURIAL DEPTH (ft.)	OVERALL LENGTH "X" (ft.)	WEIGHT (kg/lbs.)
E-53-24 (6)	10-15	5' 9"	6	1,635kg / 3,597lbs
E-53-24 (7)	16-25	6' 9"	7	1,905kg / 4,190lbs
E-53-24 (8)	26-35	7' 9"	8	2,180kg / 4,796lbs
E-53-24 (9)	36-45	8' 9"	9	2,450kg / 5,390lbs
E-53-24 (10)	46-50	9' 9"	10	2,725kg / 5,995lbs

PLAN VIEW



SIDE ELEVATION



ISOMETRIC VIEW

mm
[Inches]
ALL DIMENSIONS DEFAULT TO MILLIMETRES



UTILITY STRUCTURES INC.

61 BONGARD AVE | OTTAWA, ON | K2E 6V2
T: 613.225.6398 F: 613.225.1681 TF: 800.267.6466

www.utilitystructures.com

CONSTRUCTION DETAILS:

- ACCOMMODATES VARIOUS POLE HEIGHTS
- AVAILABLE IN VARIOUS COLOURS & FINISHES
- ADJUSTABLE BOLT CIRCLE DIAMETER
- BOLT CIRCLE DIAMETER: 150mm[6"] TO 406mm[16"]

- CSA 23.4-05
- 45 MPa (6525psi) AT 28 DAYS
- STRIPPING STRENGTH: MIN. 20 MPa(2900psi)
- 5-8% AIR ENTRAINED
- EXPOSURE CLASS: C-1
- REINFORCING: STEEL TO CSA CAN A23.1

PRODUCT CODE:

E-53-24 (H)
24" SQUARE POLE BASE

DIMENSIONS:

VARIES(H) X 610mm X 610mm

TOTAL WEIGHT:

VARIES

REVISION DATE:

MAY 19, 2017

REV. # 1