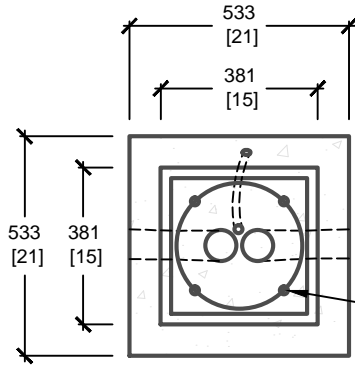


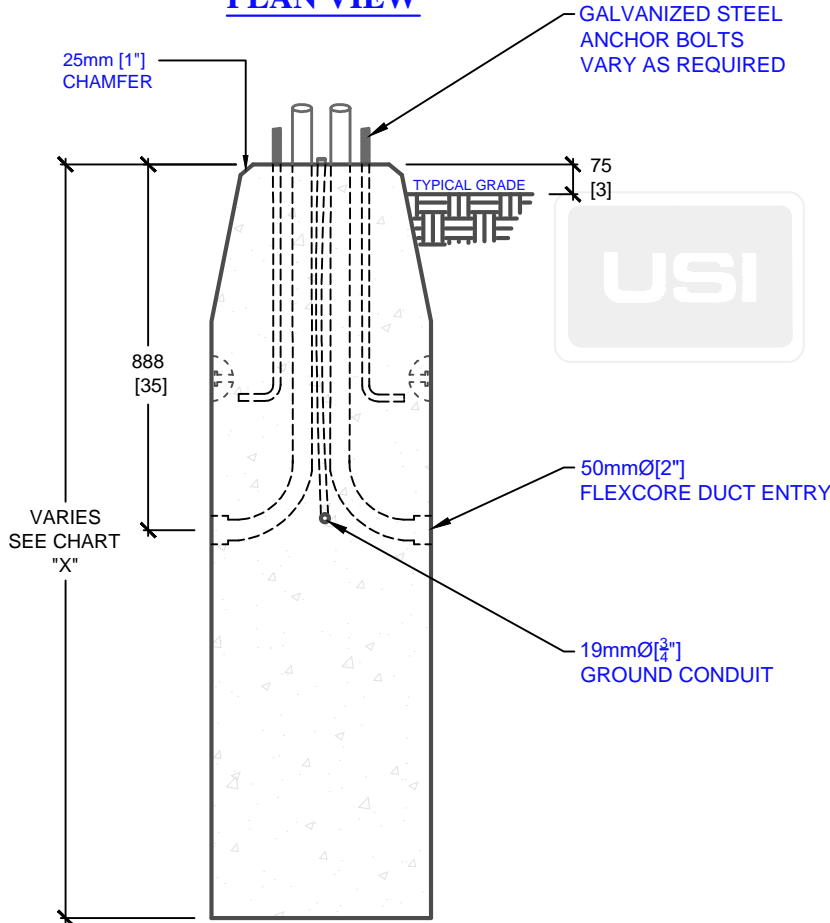
PRODUCT CODE	POLE HEIGHT (ft.)	BASE BURIAL DEPTH (ft.)	OVERALL LENGTH "X" (ft.)	WEIGHT (kg/lbs.)
E-53-21 (5)	10-17	4'9"	5	1,200kg / 2,650lbs
E-53-21 (6)	18-25	5'9"	6	1,420kg / 3,100lbs

\* BASE BURIAL DEPTH SUBJECT TO SOIL CONDITIONS, REFER TO SOIL REPORT

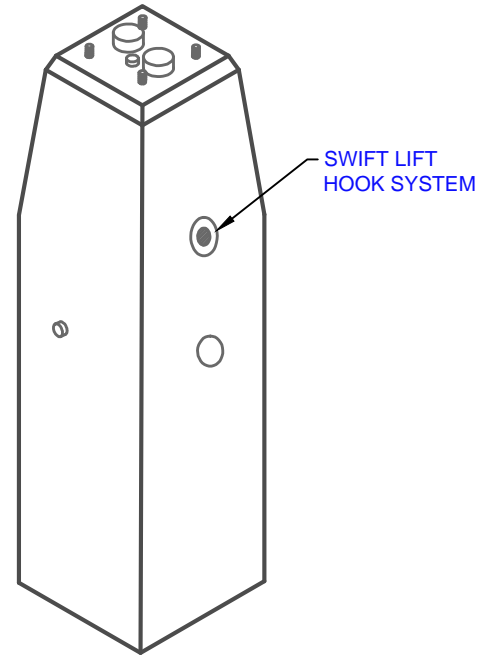


BOLT CIRCLE DIAMETER AS REQUIRED

**PLAN VIEW**



**SIDE ELEVATION**



**ISOMETRIC VIEW**

mm  
[Inches]  
ALL DIMENSIONS DEFAULT TO MILLIMETRES



**UTILITY STRUCTURES INC.**

61 BONGARD AVE | OTTAWA, ON | K2E 6V2  
T: 613.225.6398 F: 613.225.1681 TF: 800.267.6466

[www.utilitystructures.com](http://www.utilitystructures.com)

**CONSTRUCTION DETAILS:**

- ACCOMMODATES VARIOUS POLE HEIGHTS
- ADJUSTABLE BOLT CIRCLE DIAMETER
- BOLT CIRCLE DIAMETER: 150mm[6"] TO 305mm[12"]

- CSA 23.4-05
- 35 MPa (5000psi) AT 28 DAYS
- STRIPPING STRENGTH: MIN. 20 MPa(2900psi)
- 5-8% AIR ENTRAINED
- EXPOSURE CLASS: C-1
- REINFORCING: STEEL TO CSA CAN A23.1

**PRODUCT CODE:**

**E-53-21(H)**

21" SQUARE TAPERED POLE BASE

**DIMENSIONS:**

**VARIES(H) X 533mm X 533mm**

**TOTAL WEIGHT:**

**VARIES**

**REVISION DATE:**

**MAY 19, 2017**

**REV. # 1**