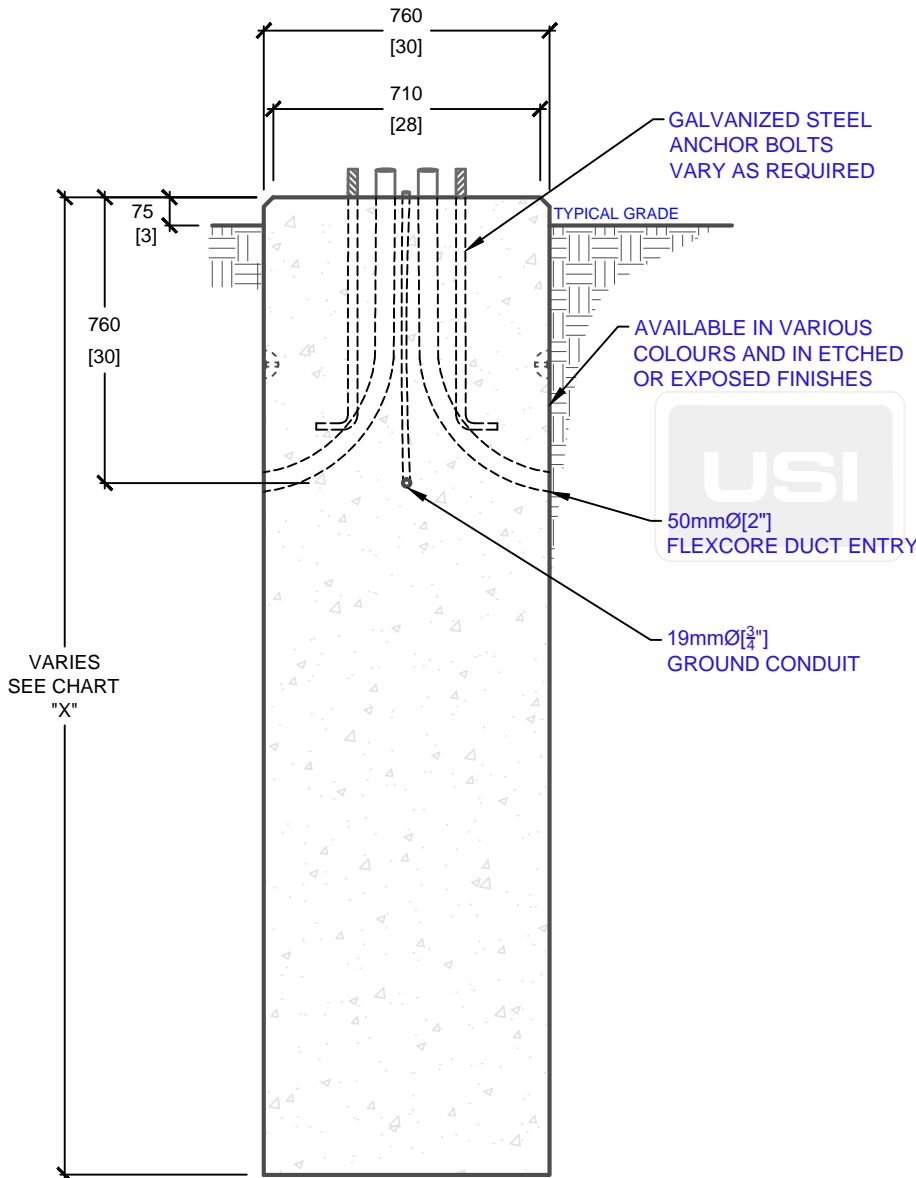


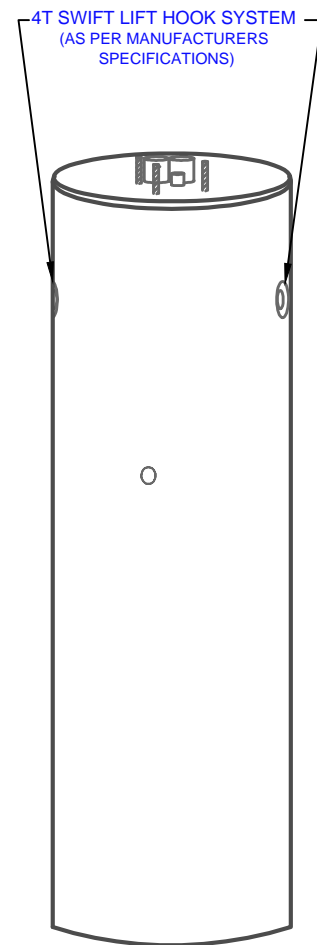
**PLAN VIEW**

PRODUCT CODE	POLE HEIGHT (ft.)	BASE BURIAL DEPTH (ft.)	OVERALL LENGTH "X" (ft.)	WEIGHT (kg/lbs.)
E-50-30G (5)	10-16	4' 9"	5'	1,600kg / 3,520lbs
E-50-30G (6)	17-29	5' 9"	6'	1,936kg / 4,260lbs
E-50-30G (7)	30-38	6' 9"	7'	2,270kg / 4,995lbs
E-50-30G (8)	39-50	7' 9"	8'	2,605kg / 5,730lbs
E-50-30G (9)	51-58	8' 9"	9'	2,880kg / 6,336lbs
E-50-30G (10)	59-65	9' 9"	10'	3,200kg / 7,040lbs
E-50-30G (11)	66-72	10' 9"	11'	3,520kg / 7,744lbs
E-50-30G (12)	73-80	11' 9"	12'	3,840kg / 8,448lbs

\* BASE BURIAL DEPTH SUBJECT TO SOIL CONDITIONS, REFER TO SOIL REPORT



**SIDE ELEVATION**



**ISOMETRIC VIEW**

mm  
[Inches]  
ALL DIMENSIONS DEFAULT TO MILLIMETRES



**UTILITY STRUCTURES INC.**

61 BONGARD AVE | OTTAWA, ON | K2E 6V2  
T: 613.225.6398 F: 613.225.1681 TF: 800.267.6466

[www.utilitystructures.com](http://www.utilitystructures.com)

**CONSTRUCTION DETAILS:**

- ACCOMMODATES VARIOUS POLE HEIGHTS
- AVAILABLE IN VARIOUS COLOURS & FINISHES
- ADJUSTABLE BOLT CIRCLE DIAMETER
- BOLT CIRCLE DIAMETER: 150mm[6"] TO 460mm[18"]

- CSA 23.4-05
- 45 MPa (6525psi) AT 28 DAYS
- STRIPPING STRENGTH: MIN. 20 MPa(2900psi)
- 5-8% AIR ENTRAINED
- EXPOSURE CLASS: C-1
- REINFORCING: STEEL TO CSA CAN A23.1

**PRODUCT CODE:**

**E-50-30G (H)**  
30" DIAMETER POLE BASE

**DIMENSIONS:**

**VARIES(H) X 760mm dia.**

**TOTAL WEIGHT:**

**VARIES**

**REVISION DATE:**

**MAY 19, 2017**

**REV. # 1**