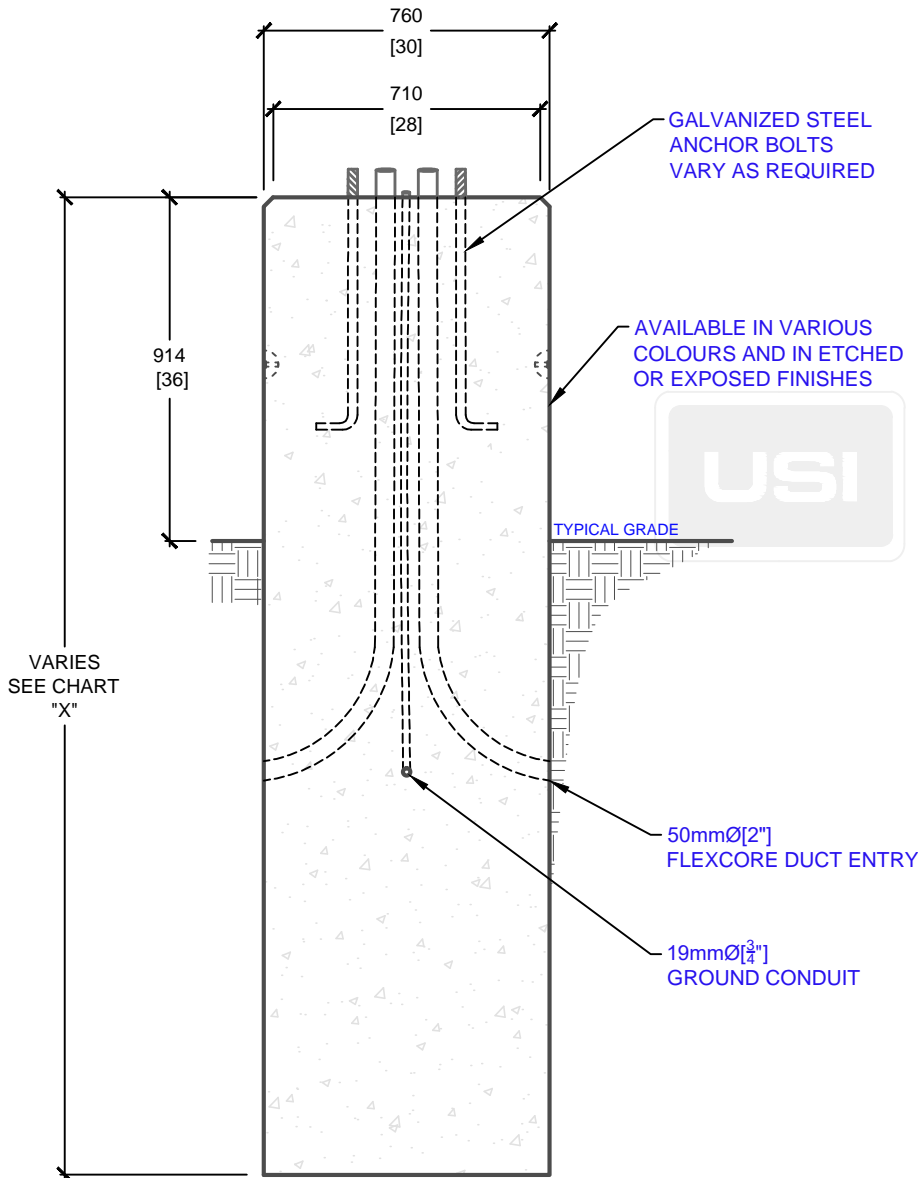


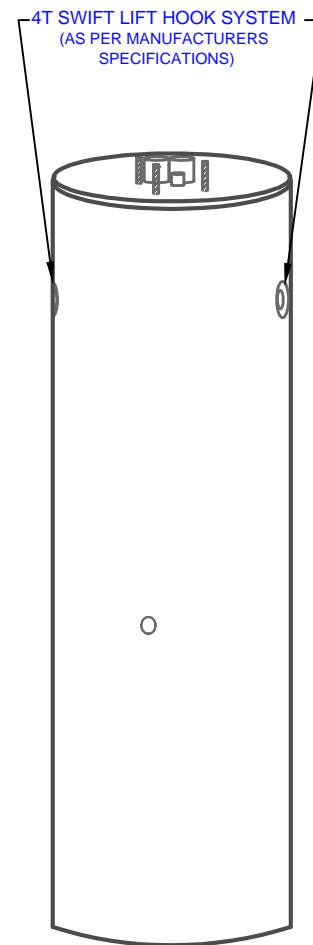
PLAN VIEW

| PRODUCT CODE | POLE HEIGHT (ft.) | BASE BURIAL DEPTH (ft.) | OVERALL LENGTH "X" (ft.) | WEIGHT (kg/lbs.) |
|--------------|----------------------|----------------------------|--------------------------------|---------------------|
| E-50-30 (8) | 10-15 | 5' | 8' | 2,605kg / 5,730lbs |
| E-50-30 (9) | 16-27 | 6' | 9' | 2,880kg / 6,336lbs |
| E-50-30 (10) | 28-38 | 7' | 10' | 3,200kg / 7,040lbs |
| E-50-30 (11) | 39-49 | 8' | 11' | 3,520kg / 7,744lbs |
| E-50-30 (12) | 50-58 | 9' | 12' | 3,840kg / 8,448lbs |

* BASE BURIAL DEPTH SUBJECT TO SOIL CONDITIONS, REFER TO SOIL REPORT



SIDE ELEVATION



ISOMETRIC VIEW

mm
[Inches]
ALL DIMENSIONS DEFAULT TO MILLIMETRES



UTILITY STRUCTURES INC.

61 BONGARD AVE | OTTAWA, ON | K2E 6V2
T: 613.225.6398 F: 613.225.1681 TF: 800.267.6466

www.utilitystructures.com

CONSTRUCTION DETAILS:

- ACCOMMODATES VARIOUS POLE HEIGHTS
- AVAILABLE IN VARIOUS COLOURS & FINISHES
- ADJUSTABLE BOLT CIRCLE DIAMETER
- BOLT CIRCLE DIAMETER: 150mm[6"] TO 460mm[18"]

- CSA 23.4-05
- 45 MPa (6525psi) AT 28 DAYS
- STRIPPING STRENGTH: MIN. 20 MPa(2900psi)
- 5-8% AIR ENTRAINED
- EXPOSURE CLASS: C-1
- REINFORCING: STEEL TO CSA CAN A23.1

PRODUCT CODE:

E-50-30 (H)

30" DIAMETER PARKING LOT POLE BASE

DIMENSIONS:

VARIES(H) X 760mm dia.

TOTAL WEIGHT:

VARIES

REVISION DATE:

MAY 19, 2017

REV. # 1