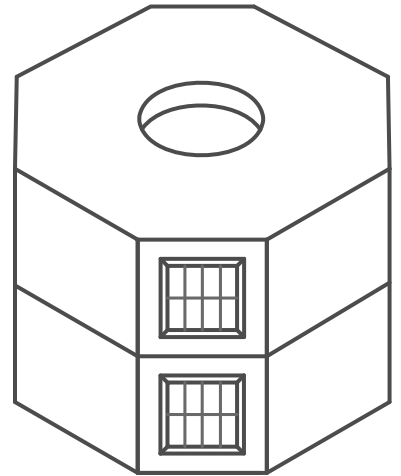
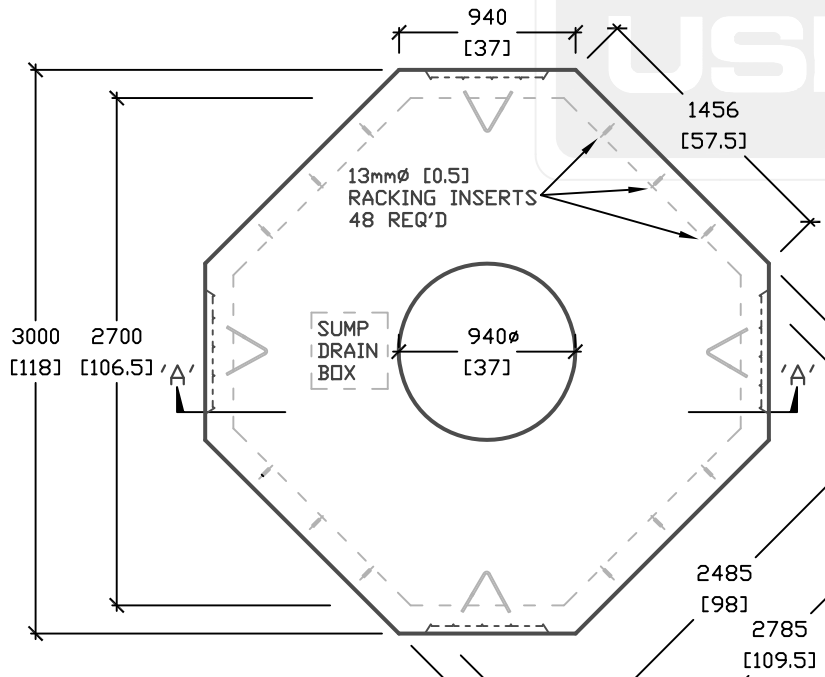


- OPTIONS AVAILABLE UPON REQUEST:**
- PULLING EYES
 - DUCT TERMINATORS
 - CAST-IRON FRAME & COVER
 - ALUMINUM OR STEEL HATCH
 - CABLE RACKS
 - CUSTOM KNOCKOUTS
 - DRAIN OR SUMP BOX HOLE

610mm x 610mm
[24 x 24]
KNOCKOUTS
(TYP.)

GALVANIZED
PULLING IRONS

CROSS SECTION 'A'



PLAN VIEW

ISOMETRIC VIEW

ALL DIMENSIONS DEFAULT TO MILLIMETERS

mm
[in.]



61 BONGARD AVE
OTTAWA, ON,
PH: 800.267.6466
FAX: 613.225.1681

NOTES:
AS PER HYDRO OTTAWA UCS0008
DESIGNED TO CL-625-ONT TRUCK
LIVE LOADING AS PER CSA S6-06
*CSA 23.4-05
35MPa (5000psi) AT 28 DAYS
5-8% AIR ENTRAINED

E-38
4-WAY ELECTRICAL
MANHOLE
WEIGHT = 13650kg/30000lbs

www.utilitystructures.com

REV.#	MM/DD/YYYY	PREP.
6	APR/3/2012	EG
7	NOV/15/2013	EG

2700mm x 2700mm [I.D.]