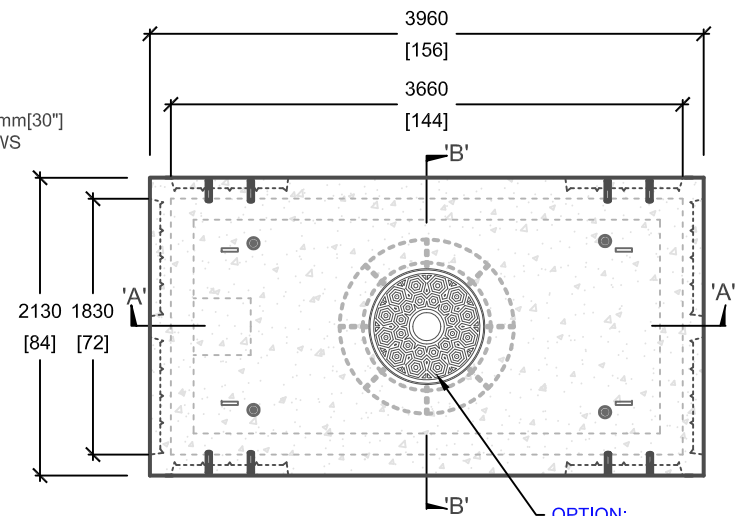
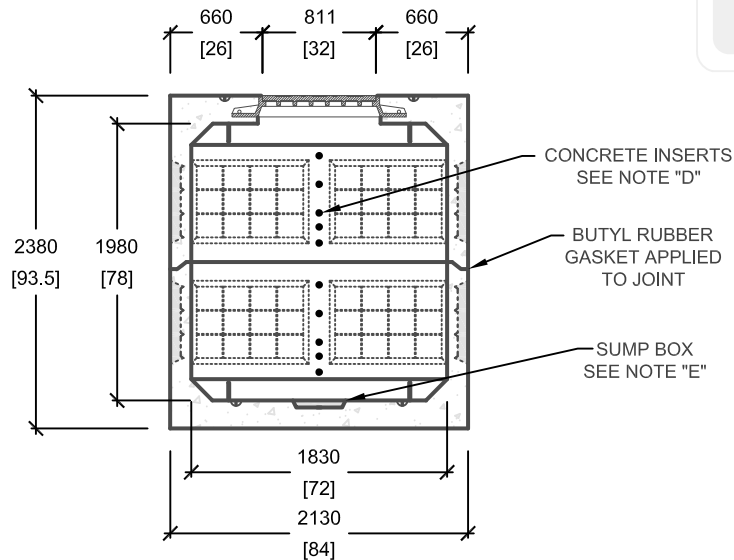


CROSS SECTION 'A'

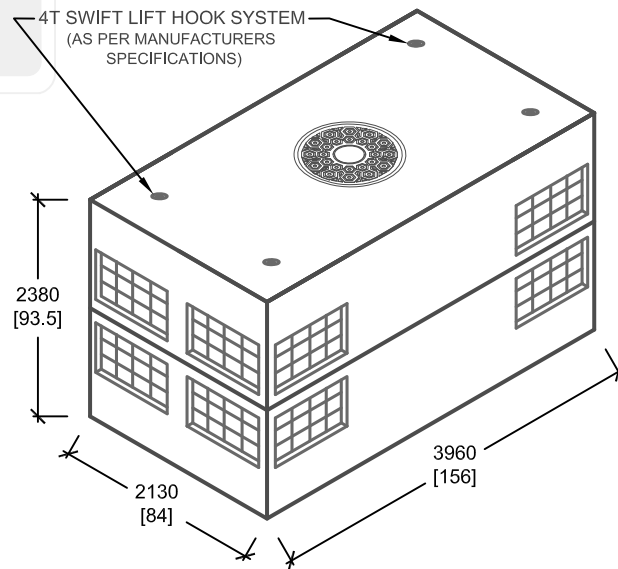


PLAN VIEW

OPTION:
FRAME & COVER CAST INTO MANHOLE TOP
SLAB (F-5 FRAME & COVER SHOWN)
(LOCATION AND TYPE OF FRAME & COVER
CAN BE MODIFIED TO SUIT REQUIREMENTS)



CROSS SECTION 'B'



ISOMETRIC VIEW

mm
[Inches]
ALL DIMENSIONS DEFAULT TO MILLIMETRES



UTILITY STRUCTURES INC.

61 BONGARD AVE | OTTAWA, ON | K2E 6V2
T: 613.225.6398 F: 613.225.1681 TF: 800.267.6466

www.utilitystructures.com

CONSTRUCTION DETAILS:

- SIMILAR TO **HYDRO OTTAWA UCS0014 - REV# 11**
- DESIGNED TO CL-625-ONT TRUCK LIVE LOADING AS PER CSA S6-06
- **FRAME & COVER CAST IN**

• **CSA 23.4-05**

- 35 MPa (5000psi) AT 28 DAYS
- **STRIPPING STRENGTH: MIN. 20 MPa(2900psi)**
- 5-8% AIR ENTRAINED
- **EXPOSURE CLASS: C-1**
- **REINFORCING: STEEL TO CSA CAN A23.1**

PRODUCT DETAILS:

- A. (16) 510mm[20"]x760mm[30"] KNOCKOUT WINDOWS
- B. (8) GALVANIZED PULLING IRONS
- C. (4) 32mm[1½"] LEL-DH INSERTS SPACED AT 300mm[12"] CENTRE ON CENTRE
- D. (80) 13mm[½"] CONCRETE INSERTS
- E. (1) 400mm[16"]x400mm[16"] SUMP BOX
* MANHOLE HEIGHT IS 100mm[4"] TALLER THAN HYDRO OTTAWA STANDARD
- WEIGHT:**
 - TOP: 7,000 kg / 15,400 lbs
 - BOTTOM: 7,200 kg / 15,840 lbs

PRODUCT CODE:

E-36-FC-CI

6' X 12' ELECTRICAL MANHOLE

INSIDE DIMENSIONS:

2.38m(H) X 1830mm x 3660mm

TOTAL WEIGHT:

14,200 kg / 31,240 lbs

REVISION DATE:

APRIL 24, 2017

REV. # 1