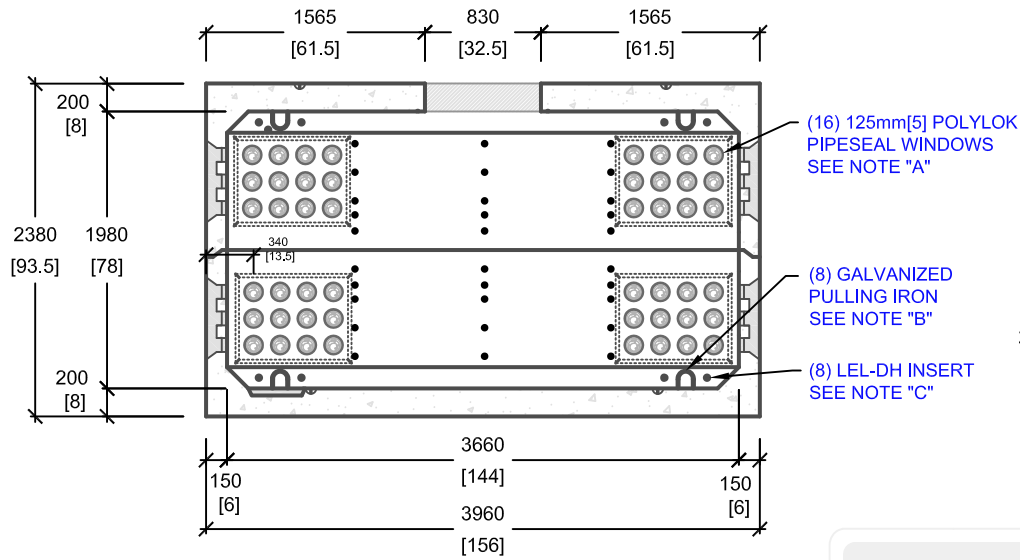
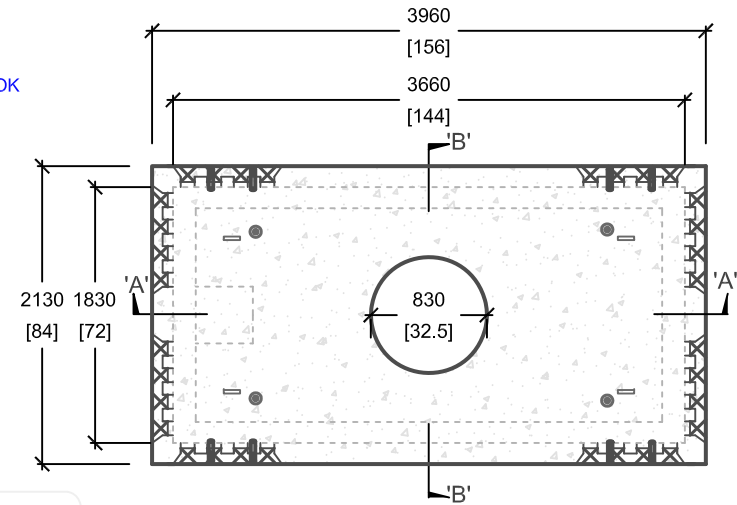


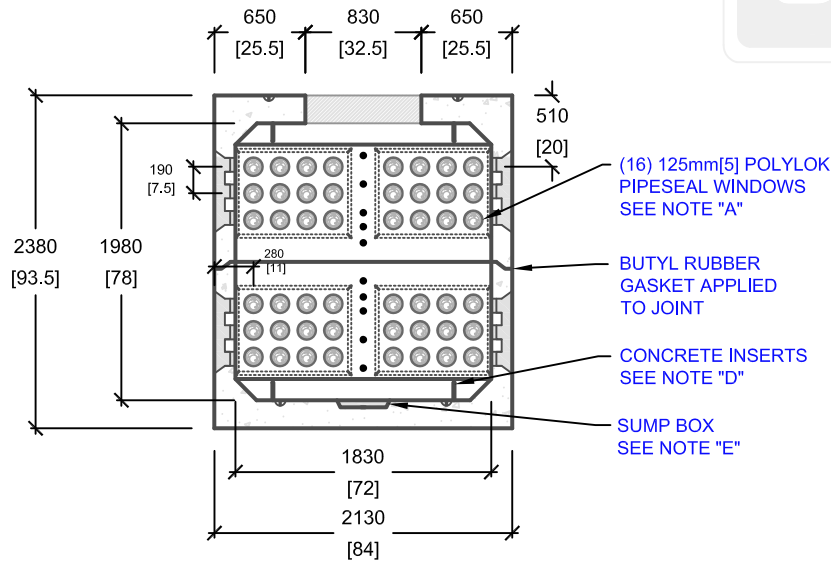
6' x 12' O.D. COMMUNICATION MANHOLE



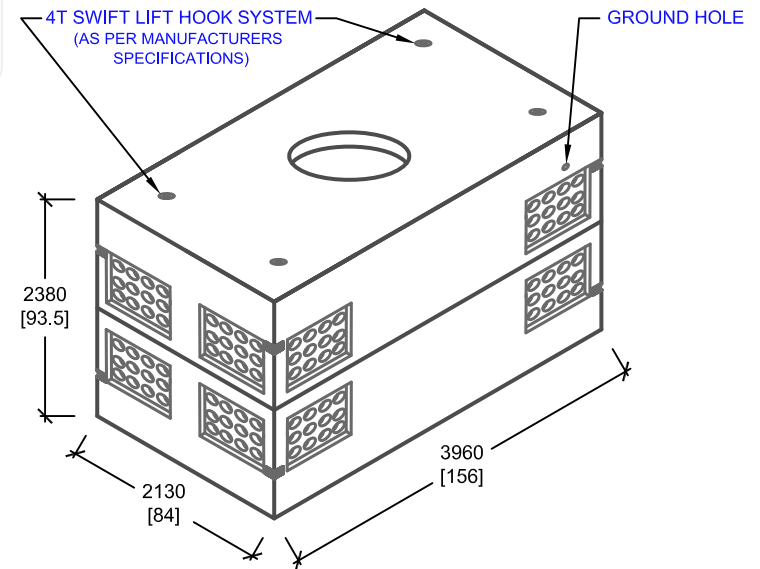
CROSS SECTION 'A'



PLAN VIEW



CROSS SECTION 'B'



ISOMETRIC VIEW

mm
[Inches]
ALL DIMENSIONS DEFAULT TO MILLIMETRES



UTILITY STRUCTURES INC.

61 BONGARD AVE | OTTAWA, ON | K2E 6V2
T: 613.225.6398 F: 613.225.1681 TF: 800.267.6466

www.utilitystructures.com

CONSTRUCTION DETAILS:

- DESIGNED TO CL-625-ONT TRUCK LIVE LOADING AS PER CSA S6-06
- CSA 23.4-05
 - 35 MPa (5000psi) AT 28 DAYS
 - STRIPPING STRENGTH: MIN. 20 MPa(2900psi)
 - 5-8% AIR ENTRAINMENT
 - EXPOSURE CLASS: C-1
- REINFORCING: STEEL TO CSA CAN A23.1

PRODUCT DETAILS:

- A. (16) 125mm[5"] POLYLOK PIPESEAL WINDOWS
- B. (8) GALVANIZED PULLING IRONS
- C. (8) 32mm[1 1/4"] LEL-DH INSERTS SPACED AT 300mm[12"] CENTRE ON CENTRE
- D. (80) 13mm[1/2"] CONCRETE INSERTS
- E. (1) 400mm[16"]x400mm[16"] SUMP BOX

WEIGHT:

- TOP: 7,000 kg / 15,400 lbs
- BOTTOM: 7,200 kg / 15,840 lbs

PRODUCT CODE:

E-36-COMM

6' X 12' COMMUNICATION MANHOLE

INSIDE DIMENSIONS:

2.38m(H) X 1830mm x 3660mm

TOTAL WEIGHT:

14,200 kg / 31,240 lbs

REVISION DATE:

JANUARY 25, 2018

REV. # 12