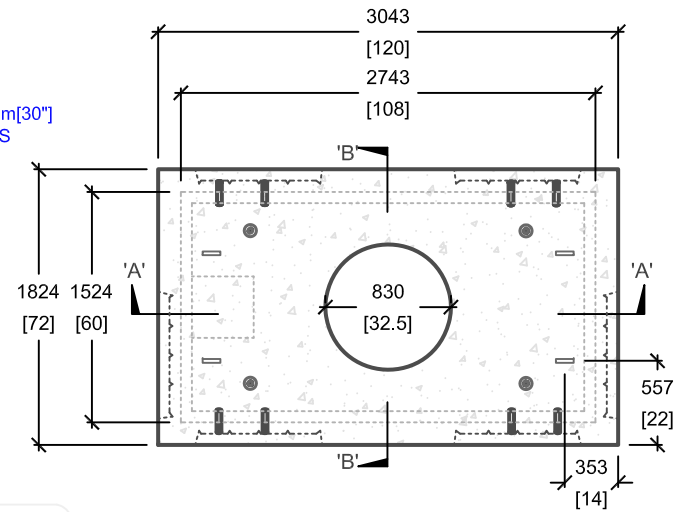
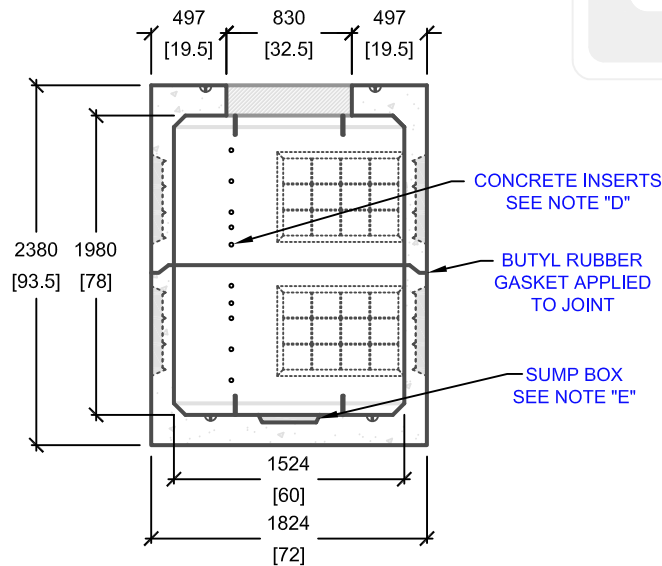


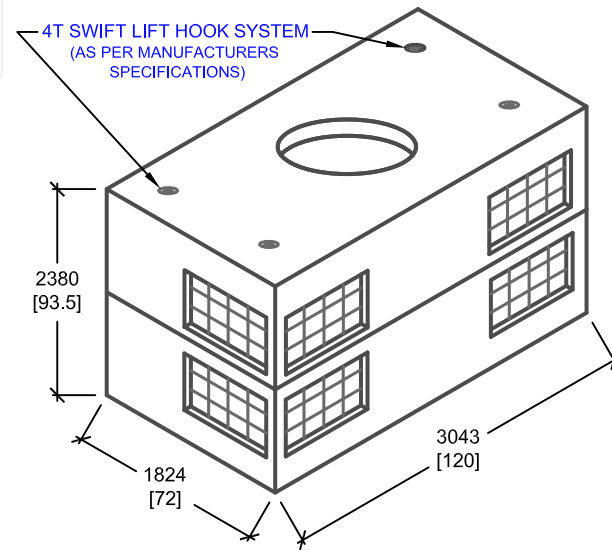
CROSS SECTION 'A'



PLAN VIEW



CROSS SECTION 'B'



ISOMETRIC VIEW



mm
[Inches]
ALL DIMENSIONS DEFAULT TO MILLIMETRES



UTILITY STRUCTURES INC.

61 BONGARD AVE | OTTAWA, ON | K2E 6V2
T: 613.225.6398 F: 613.225.1681 TF: 800.267.6466

www.utilitystructures.com

CONSTRUCTION DETAILS:

- REFERENCE **HYDRO OTTAWA UCS0013 - REV# 11**
- DESIGNED TO CL-625-ONT TRUCK LIVE LOADING AS PER CSA S6-06

• **CSA 23.4-05**

- 35 MPa (5000psi) AT 28 DAYS
- STRIPPING STRENGTH: MIN. 20 MPa(2900psi)
- 5-8% AIR ENTRAINED
- EXPOSURE CLASS: F-1
- REINFORCING: STEEL TO CSA CAN A23.1

PRODUCT DETAILS:

- A. (12) 510mm[20"]x760mm[30"] KNOCKOUT WINDOWS
 - B. (8) GALVANIZED PULLING IRONS
 - C. (4) 32mm[1½"] LEL-DH INSERTS SPACED AT 300mm[12"] CENTRE ON CENTRE
 - D. (80) 13mm[½"] CONCRETE INSERTS
 - E. (1) 400mm[16"]x400mm[16"] SUMP BOX
* MANHOLE HEIGHT IS 100mm[4"] TALLER THAN HYDRO OTTAWA STANDARD
- WEIGHT:**
- TOP: 6,000 kg / 13,200 lbs
 - BOTTOM: 6,200 kg / 13,640 lbs

PRODUCT CODE:

E-35

5' X 9' ELECTRICAL MANHOLE

INSIDE DIMENSIONS:

2.38m(H) X 1524mm x 2743mm

TOTAL WEIGHT:

12,200 kg / 26,840lbs

REVISION DATE:

FEBRUARY 14, 2017

REV.# 10