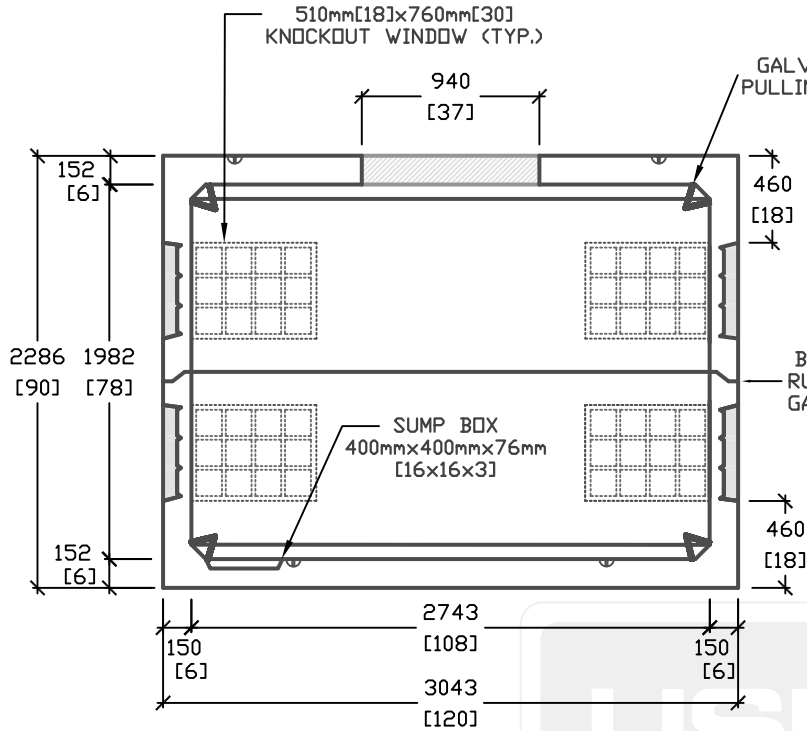
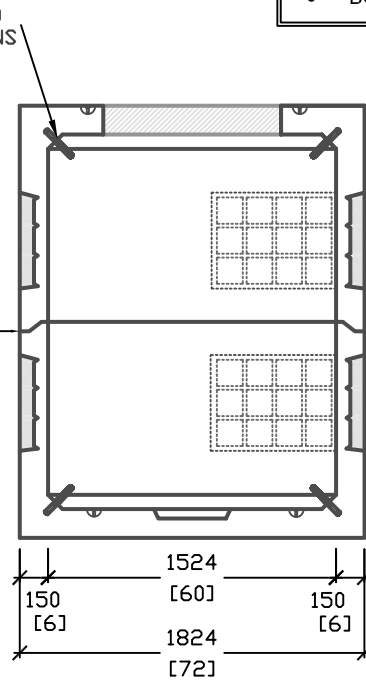


6' x 10' O.D. COMMUNICATION MANHOLE

- OPTIONS AVAILABLE:**
- DUCT TERMINATORS
 - CABLE RACKS
 - CUSTOM OPENINGS
- WEIGHT:**
- TOP: 5300kg
 - BOTTOM: 5500kg

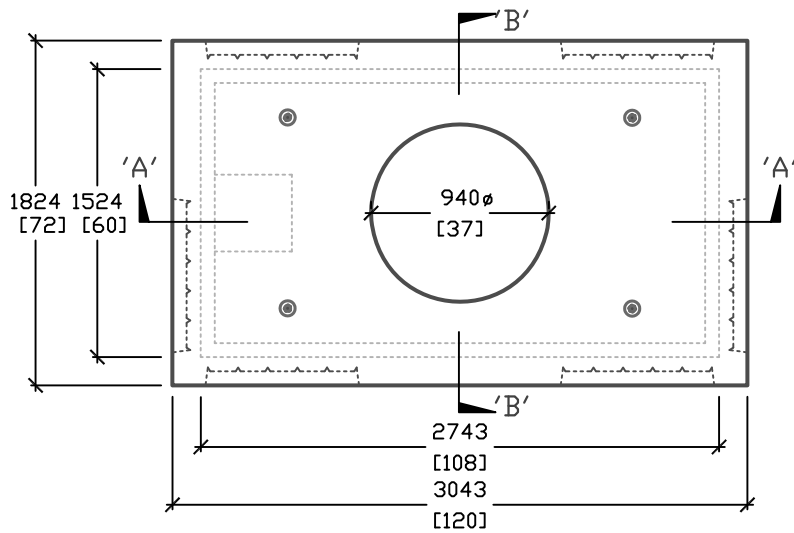


CROSS SECTION 'A'

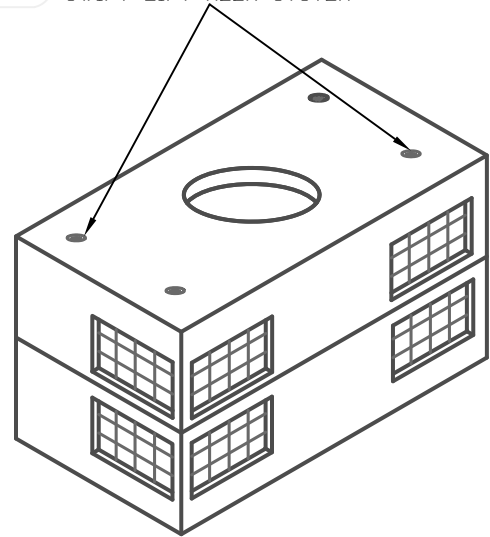


CROSS SECTION 'B'

SWIFT LIFT HOOK SYSTEM



PLAN VIEW



ISOMETRIC VIEW

ALL DIMENSIONS DEFAULT TO MILLIMETERS

mm
[in.]



61 BONGARD AVE
OTTAWA, ON,
PH: 800.267.6466
FAX: 613.225.1681

DESIGNED TO CL-625-DNT TRUCK
LIVE LOADING AS PER CSA S6-06

*CSA 23.4-05
35MPa (5000psi) AT 28 DAYS
6-8% AIR ENTRAINED

E-35-COMM

COMMUNICATION MANHOLE

TOTAL WEIGHT = 10800kg

www.utilitystructures.com

REV.#	MM/DD/YYYY	PREP.
5	NOV/02/2012	EG
6	OCT/07/2013	EG

2.3m(H) x 1524mm x 2743mm (I.D.)