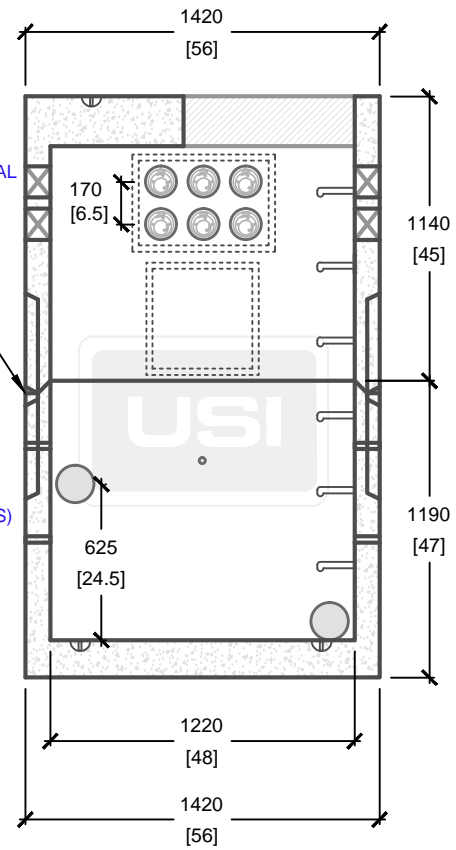
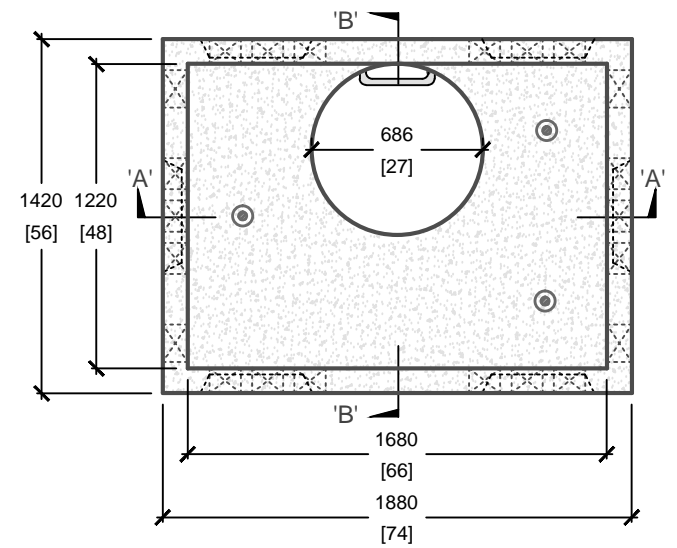


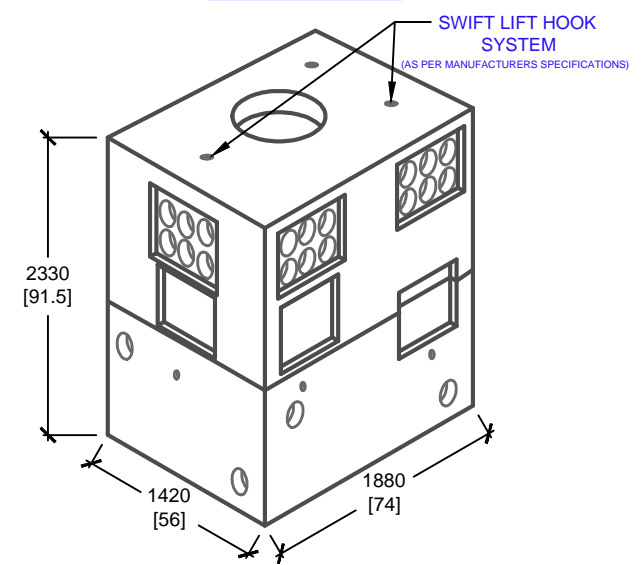
CROSS SECTION 'A'



CROSS SECTION 'B'



PLAN VIEW



ISOMETRIC VIEW

mm
[Inches]
ALL DIMENSIONS DEFAULT TO MILLIMETRES



UTILITY STRUCTURES INC.
61 BONGARD AVE | OTTAWA, ON | K2E 6V2
T: 613.225.6398 F: 613.225.1681 TF: 800.267.6466
www.utilitystructures.com

CONSTRUCTION DETAILS:

- AS PER **OPSD 2111.04**
- DESIGNED TO CL-625-ONT TRUCK LIVE LOADING AS PER CSA S6-06
- **CSA 23.4-05**
- 35 MPa (5000psi) AT 28 DAYS
- STRIPPING STRENGTH: MIN. 20 MPa(2900psi)
- 5-8% AIR ENTRAINED
- EXPOSURE CLASS: C-1
- REINFORCING: STEEL TO CSA CAN A23.1

PRODUCT DETAILS:

- (6) 450mm[18"]x450mm[18"] KNOCKOUT WINDOWS
- (6) WINDOWS WITH (6) 127mm[5"] POLYLOK PIPESEALS PER WINDOW
- (4) 150mm[6"] KNOCKOUT DRAIN HOLES
- (6) 25mm[1"] GROUND HOLES (FOR PULLING EYES)

WEIGHT:

- TOP: 2,500 kg / 5,500 lbs
- BOTTOM: 2,700 kg / 5,950 lbs

PRODUCT CODE:	
E-24 OPSD MANHOLE	
INSIDE DIMENSIONS:	
2.33m(H) X 1220mm x 1680mm	
TOTAL WEIGHT:	
5,200 kg / 11,450lbs	
REVISION DATE:	SEPTEMBER 19, 2017
	REV. # 8