

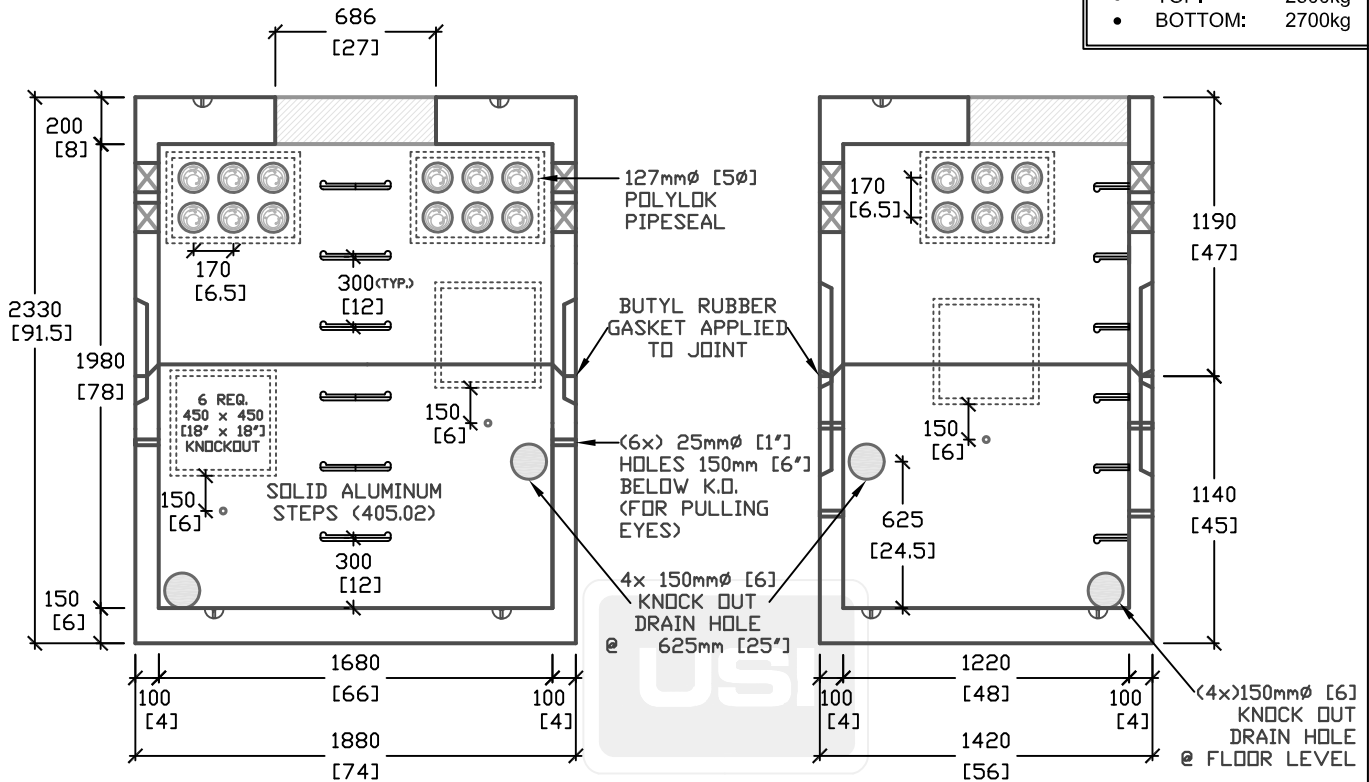
4.5' x 6' O.D. COMMUNICATION MANHOLE

OPTIONS AVAILABLE:

- PULLING EYES
- CABLE RACKS
- CUSTOM OPENINGS

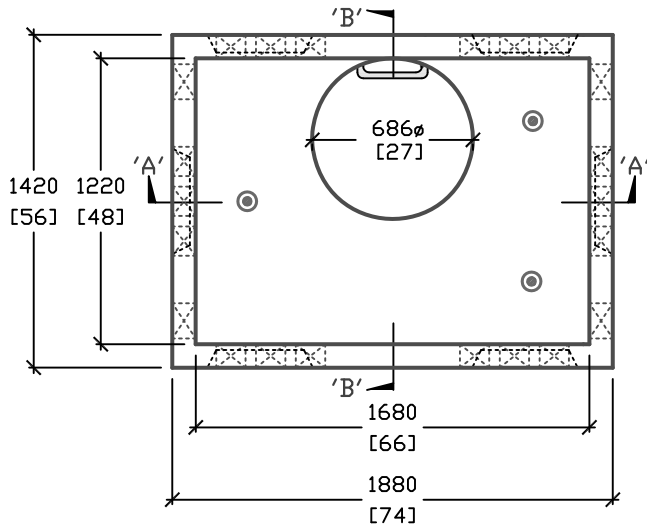
WEIGHT:

- TOP: 2500kg
- BOTTOM: 2700kg

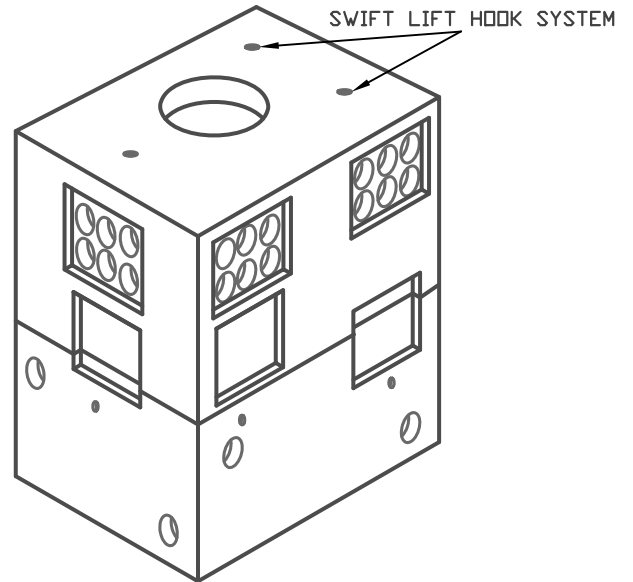


CROSS SECTION 'A'

CROSS SECTION 'B'



PLAN VIEW



ISOMETRIC VIEW

ALL DIMENSIONS DEFAULT TO MILLIMETERS

mm
[in.]



61 BONGARD AVE
OTTAWA, ON,
PH: 800.267.6466
FAX: 613.225.1681

AS PER O.P.S.D. 2111.04
DESIGNED TO CL-625-DNT TRUCK
LIVE LOADING AS PER CSA S6-06

*CSA 23.4-05
35MPa (5000psi) AT 28 DAYS
6-8% AIR ENTRAINED

E-24

COMMUNICATION MANHOLE

TOTAL WEIGHT = 5200kg

www.utilitystructures.com

REV.#	MM/DD/YYYY	PREP.
4	AUG/16/2013	EG
5	OCT/04/2013	EG

2.33m(H)x1220mmx1680mm (I.D.)