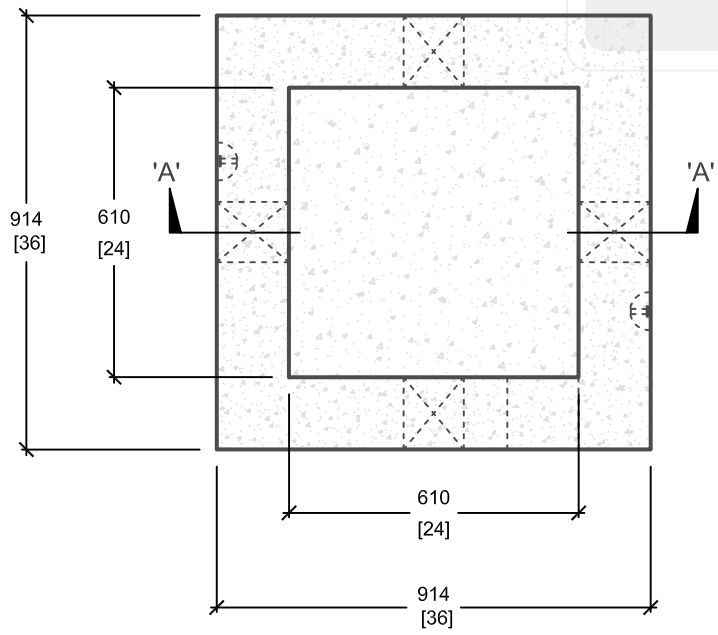
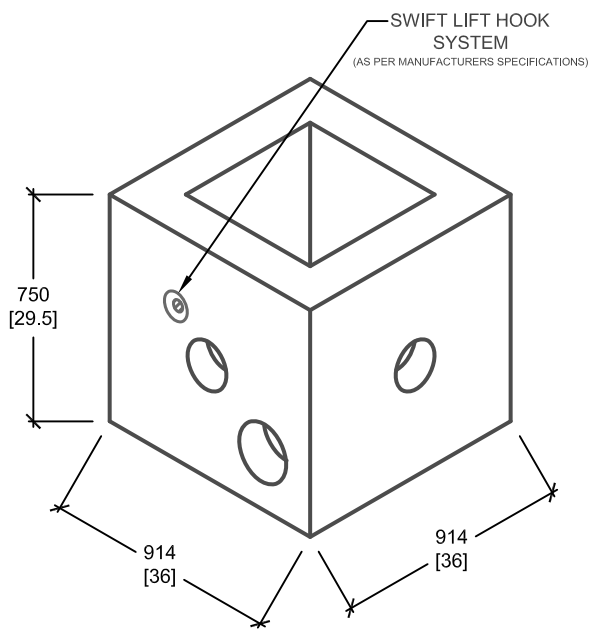


**CROSS SECTION 'A'**



**PLAN VIEW**



mm [Inches]  
ALL DIMENSIONS DEFAULT TO MILLIMETRES



**UTILITY STRUCTURES INC.**  
61 BONGARD AVE | OTTAWA, ON | K2E 6V2  
T: 613.225.6398 F: 613.225.1681 TF: 800.267.6466  
[www.utilitystructures.com](http://www.utilitystructures.com)

**CONSTRUCTION DETAILS:**

- AS PER **OPSD 2112.04M**
- DESIGNED TO CL-625-ONT TRUCK LIVE LOADING AS PER CSA S6-06

- CSA 23.4-05
- 35 MPa (5000psi) AT 28 DAYS
- STRIPPING STRENGTH: MIN. 20 MPa(2900psi)
- 5-8% AIR ENTRAINED
- EXPOSURE CLASS: F-1
- REINFORCING: STEEL TO CSA CAN A23.1

PRODUCT CODE: **E-22M**  
ELECTRICAL HANDHOLE

INSIDE DIMENSIONS:  
**0.75m(H) x 610mm x 610mm**

TOTAL WEIGHT:  
**1,000 kg / 2,200 lbs**

REVISION DATE: **FEBRUARY 6, 2015** REV. #4