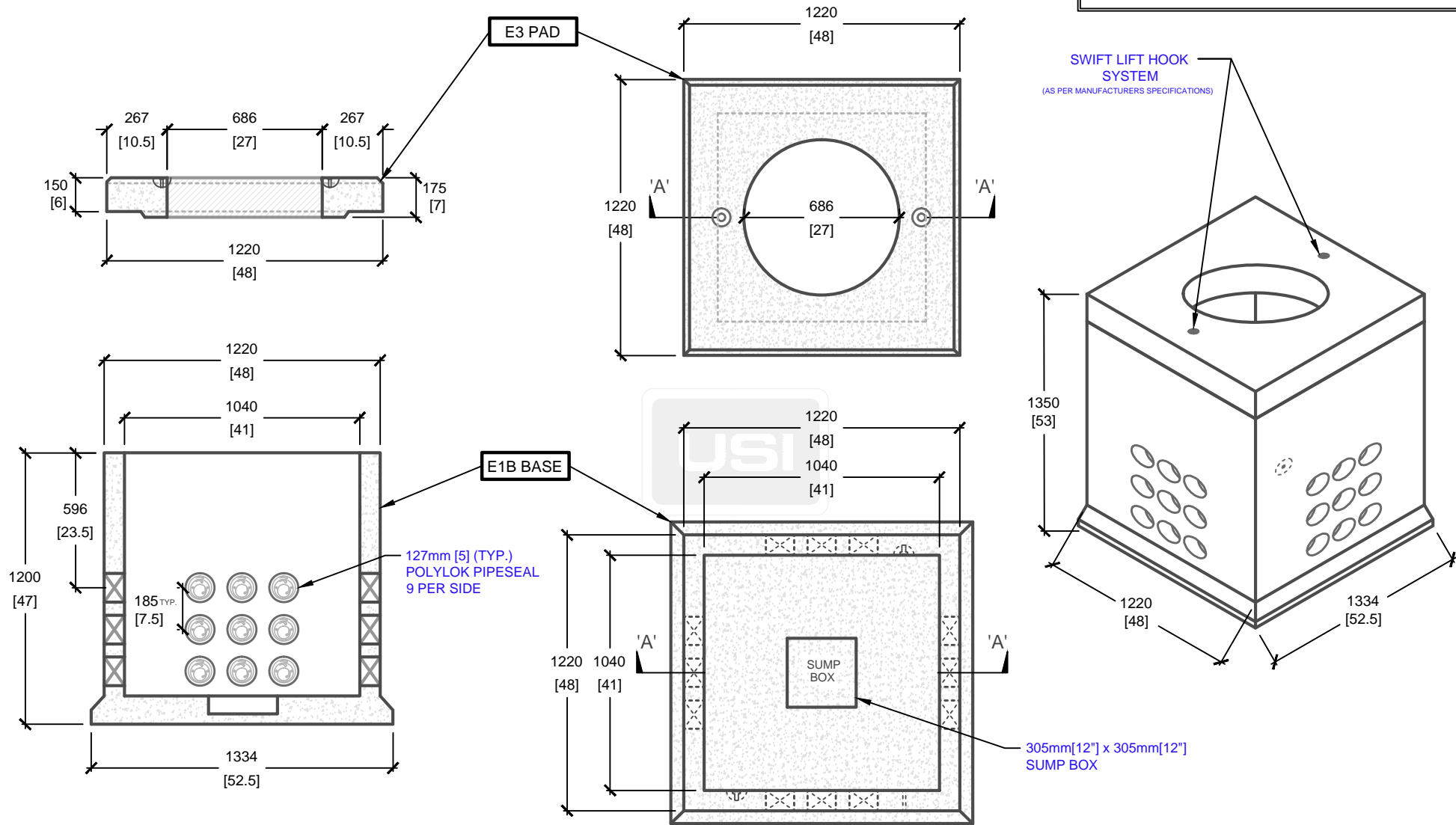


4' x 4' O.D. COMMUNICATION MANHOLE



CROSS SECTION 'A'

PLAN VIEW

mm
[Inches]
ALL DIMENSIONS DEFAULT TO MILLIMETRES



UTILITY STRUCTURES INC.

61 BONGARD AVE | OTTAWA, ON | K2E 6V2
T: 613.225.6398 F: 613.225.1681 TF: 800.267.6466

www.utilitystructures.com

CONSTRUCTION DETAILS:

- DESIGNED TO **CL-625-ONT** TRUCK LIVE LOADING AS PER **CSA S6-06**
- **CSA 23.4-05**
 - 35 MPa (5000psi) AT 28 DAYS
 - STRIPPING STRENGTH: MIN. 20 MPa(2900psi)
 - 5-8% AIR ENTRAINED
 - EXPOSURE CLASS: C-1
- REINFORCING: STEEL TO CSA CAN A23.1

PRODUCT DETAILS:

- (4) 127mm[5"] POLYLOK PIPESEAL WINDOWS (9 POLYLOKS PER WINDOW)
- CLOSED BOTTOM MANHOLE
- PAD OPENING: 686mm[27"]
- WEIGHT:**
 - E-1B BASE: 1,400 kg / 3,080 lbs
 - E-3 PAD: 420 kg / 925 lbs
- CUSTOM OPTIONS AVAILABLE:**
 - CUSTOM WINDOWS, OPENINGS, CABLE RACKS, PULLING EYES & MANHOLE HEIGHT

PRODUCT CODE:

E-1B^C/E-3
COMMUNICATION MANHOLE

INSIDE DIMENSIONS:

1.35m(H) X 1040mm x 1040mm

TOTAL WEIGHT:

1,820 kg / 4,000 lbs

REVISION DATE:

SEPTEMBER 21, 2017

REV. # 5