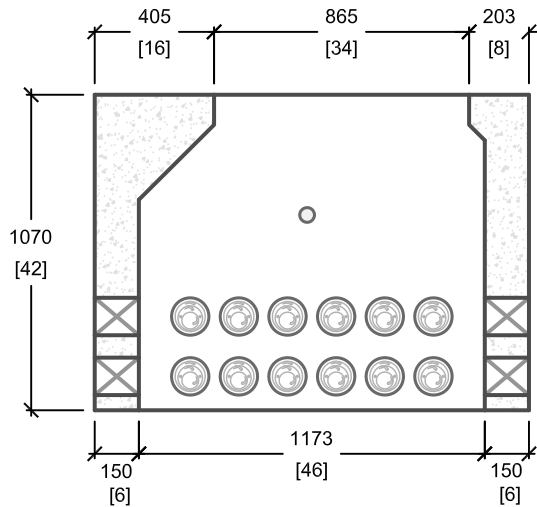
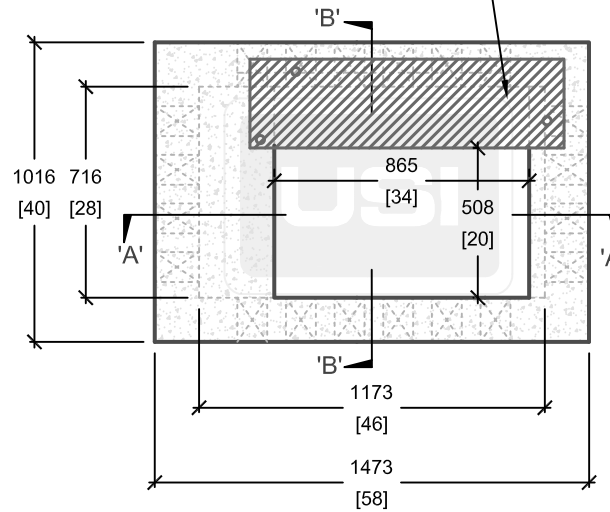


CROSS SECTION 'B'

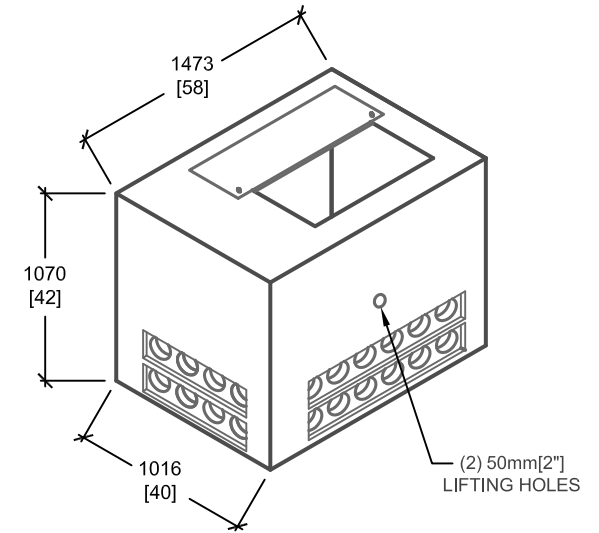


CROSS SECTION 'A'

GALVANIZED STEEL PLATE
1065mm[42"]x300mm[12"]x13mm[½"]



PLAN VIEW



ISOMETRIC VIEW

mm
[Inches]
ALL DIMENSIONS DEFAULT TO MILLIMETRES



UTILITY STRUCTURES INC.

61 BONGARD AVE | OTTAWA, ON | K2E 6V2
T: 613.225.6398 F: 613.225.1681 TF: 800.267.6466

www.utilitystructures.com

CONSTRUCTION DETAILS:

- AS PER **HYDRO ONE DL24953C01**
- KABAR TX VAULT

• **CSA 23.4-05**

- 35 MPa (5000psi) AT 28 DAYS
- STRIPPING STRENGTH: MIN. 20 MPa(2900psi)
- 5-8% AIR ENTRAINED
- EXPOSURE CLASS: F-1
- REINFORCING: STEEL TO CSA CAN A23.1

PRODUCT DETAILS:

- (2) 127mm[5"] POLYLOK PIPESEAL WINDOWS (12 POLYLOKS PER WINDOW)
- (2) 127mm[5"] POLYLOK PIPESEAL WINDOWS (8 POLYLOKS PER WINDOW)
- GALVANIZED STEEL PLATE 1065mm[42"]x300mm[12"]x13mm[½"]

PRODUCT CODE:

E-15-K

SINGLE PHASE KABAR BASE

OUTSIDE DIMENSIONS:

1.07m(H) X 1016mm x 1473mm

TOTAL WEIGHT:

1,600 kg / 3,500 lbs

REVISION DATE:

APRIL 16, 2015

REV. # 4