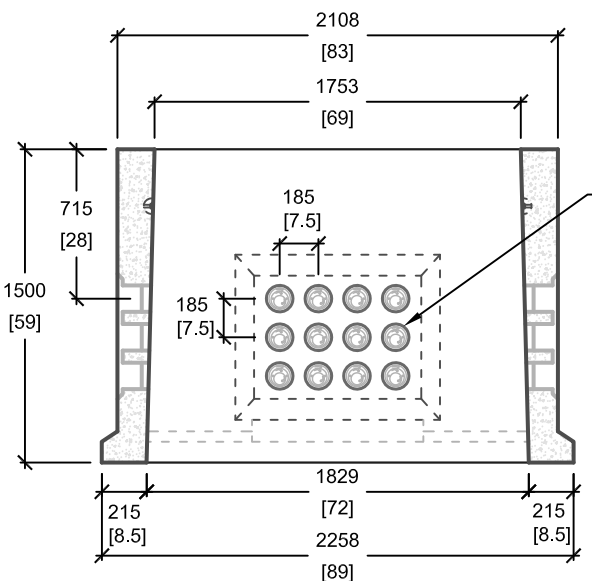
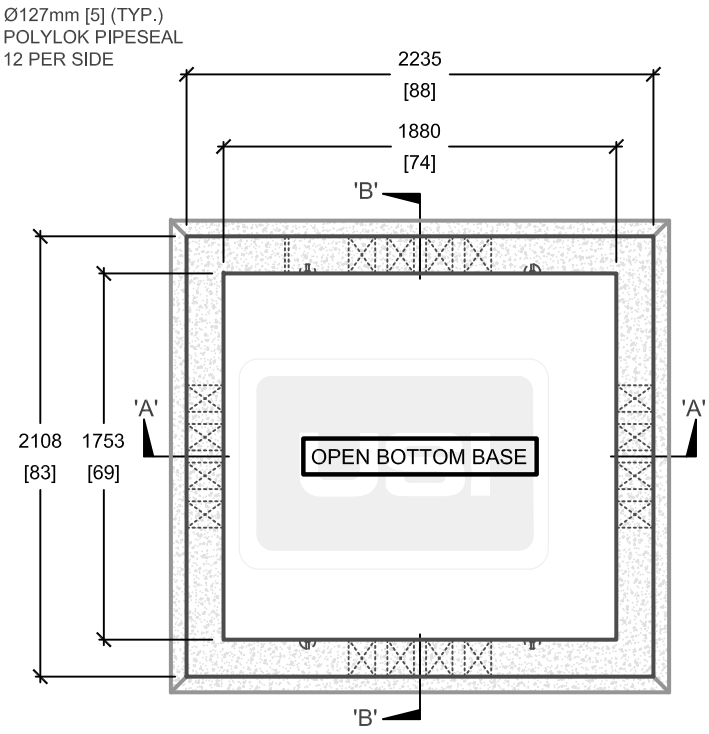


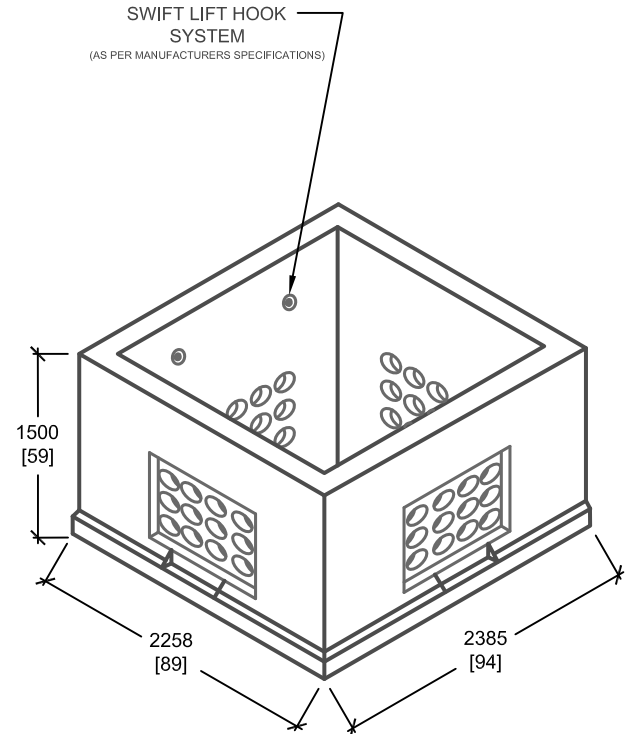
| LOAD REQUIREMENTS | |
|---------------------------|----------------------|
| DISTRIBUTED LATERAL LOAD | 25 kN/m ² |
| TOP SLAB DISTRIBUTED LOAD | 60 kN/m ² |
| TOP SLAB POINT LOAD | 70 kN |



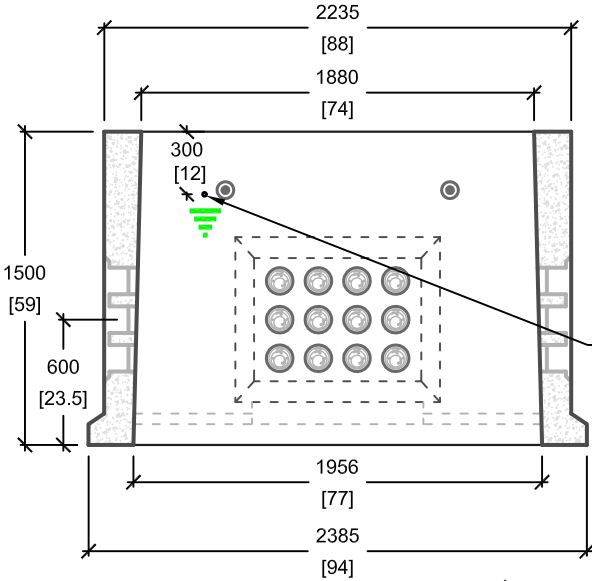
CROSS SECTION 'B'



PLAN VIEW



ISOMETRIC VIEW



CROSS SECTION 'A'

mm
[Inches]
ALL DIMENSIONS DEFAULT TO MILLIMETRES

- NOTES:**
- SOIL BEARING CAPACITY TO BE MIN. 240kPa (SLS) OR USE A CONCRETE BASE PAD; VERIFY ON SITE.
 - SEISMIC ANCHORAGE FROM EQUIPMENT TO PAD AND PAD TO BASE TO BE PROVIDED BY OTHERS.
 - BACK FILL WITH NON-FROST SUSCEPTIBLE FILL TO PREVENT UPLIFT OF TOP SLAB



UTILITY STRUCTURES INC.
61 BONGARD AVE | OTTAWA, ON | K2E 6V2
T: 613.225.6398 F: 613.225.1681 TF: 800.267.6466
www.utilitystructures.com

- CONSTRUCTION DETAILS:**
- REFERENCE **HYDRO OTTAWA UCS0026**
 - REFERENCE **HYDRO ONE DU-09-404**
 - **CSA 23.4-05**
 - 35 MPa (5000psi) AT 28 DAYS
 - STRIPPING STRENGTH: MIN. 20 MPa(2900psi)
 - 5-8% AIR ENTRAINED
 - EXPOSURE CLASS: C-1
 - REINFORCING: STEEL TO CSA CAN A23.1

- PRODUCT DETAILS:**
- (4) 127mm[5"] POLYLOK PIPESEAL WINDOWS (12 POLYLOKS PER WINDOW)
 - SWITCHGEAR TRANSFORMER BASE
 - CLOSED BOTTOM VERSION AVAILABLE (DWG# E-13B)
 - USE WITH **E-13PS, E-13PMH, E-13TB, E-13HON OR E-13 (404) SWITCHGEAR PAD**
 - CUSTOM OPTIONS AVAILABLE:
 - CUSTOM WINDOWS & OPENINGS

| | |
|----------------------------------|-----------------------|
| PRODUCT CODE: | |
| <h1>E-13</h1> | |
| SWITCHGEAR TRANSFORMER BASE | |
| OUTSIDE DIMENSIONS: | |
| 1.5m(H) X 2108mm x 2235mm | |
| TOTAL WEIGHT: | |
| 5,200 kg / 11,440 lbs | |
| REVISION DATE: | MARCH 14, 2016 |
| REV. # | 5 |