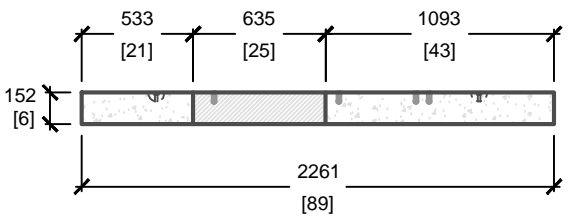
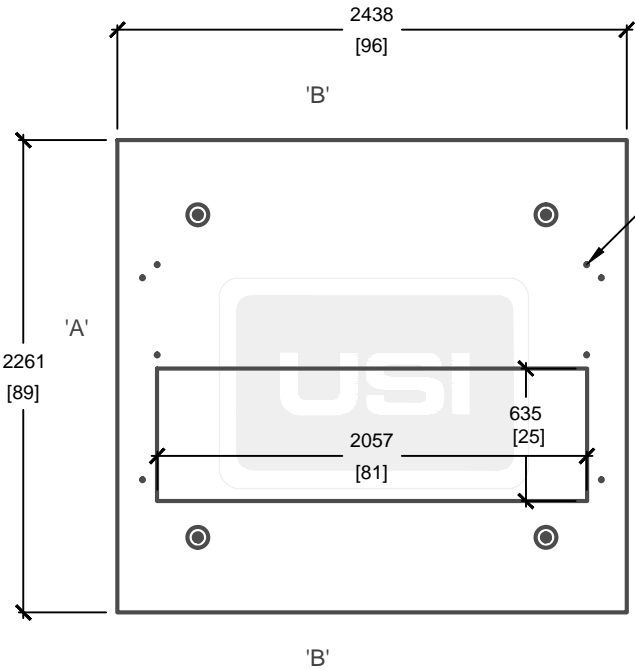


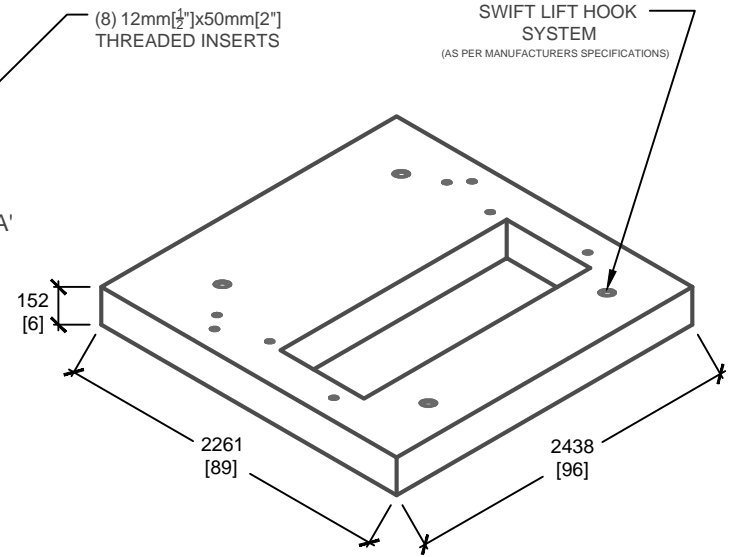
LOAD REQUIREMENTS	
DISTRIBUTED LATERAL LOAD	25 kN/m ²
TOP SLAB DISTRIBUTED LOAD	60 kN/m ²
TOP SLAB POINT LOAD	70 kN



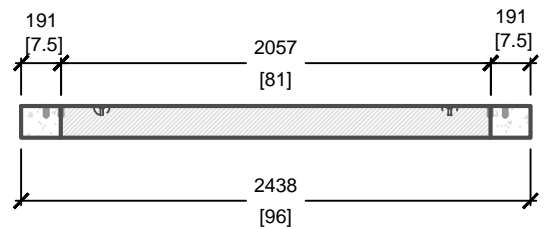
CROSS SECTION 'B'



PLAN VIEW



ISOMETRIC VIEW



CROSS SECTION 'A'

mm
[Inches]
ALL DIMENSIONS DEFAULT TO MILLIMETRES

NOTES:
• SEISMIC ANCHORAGE FROM EQUIPMENT TO PAD AND PAD TO BASE TO BE PROVIDED BY OTHERS.



UTILITY STRUCTURES INC.
61 BONGARD AVE | OTTAWA, ON | K2E 6V2
T: 613.225.6398 F: 613.225.1681 TF: 800.267.6466
www.utilitystructures.com

- CONSTRUCTION DETAILS:**
- REFERENCE **HYDRO ONE DU-09-404**
 - CSA A23.1
 - 35 MPa (5000psi) AT 28 DAYS
 - STRIPPING STRENGTH: MIN. 20 MPa(2900psi)
 - 5-8% AIR ENTRAINED
 - EXPOSURE CLASS: C-1
 - REINFORCING: STEEL TO CSA G30.18

- PRODUCT DETAILS:**
- (8) 12mm [1/2] x 50mm [2] THREADED INSERTS
 - INSERT LOCATION AS PER HYDRO ONE DU-09-404
 - (4) SWIFT LIFT HOOKS
 - USE WITH **E-13 SWITCHGEAR BASE**
 - CUSTOM OPTIONS AVAILABLE:
 - CUSTOM WINDOWS & OPENINGS

PRODUCT CODE:
E-13 (404)
THREE PHASE SWITCHGEAR (5 WAY) PAD

OUTSIDE DIMENSIONS:
0.15m(H) X 2261mm x 2438mm

TOTAL WEIGHT:
1,540 kg / 3,388 lbs

REVISION DATE: MARCH 14, 2016 **REV. # 2**