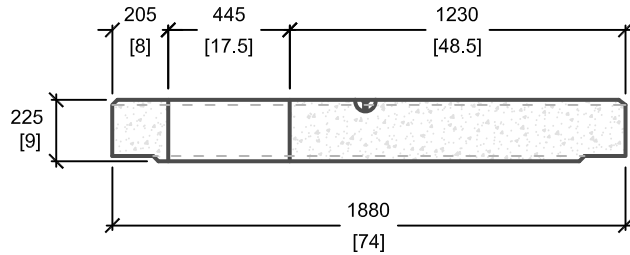
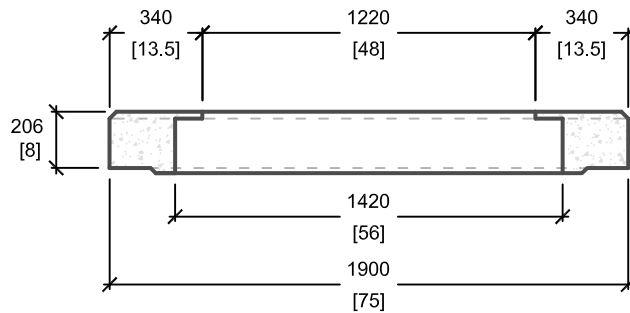


MULTI-PURPOSE PAD KNOCKOUT OPENING DETAILS	
TRANSFORMER SIZE	PAD OPENING SIZE
150kVA TO 500kVA	440mm[17"] x 1200mm[48"]
750kVA TO 2500kVA	440mm[17"] x 1400mm[56"]

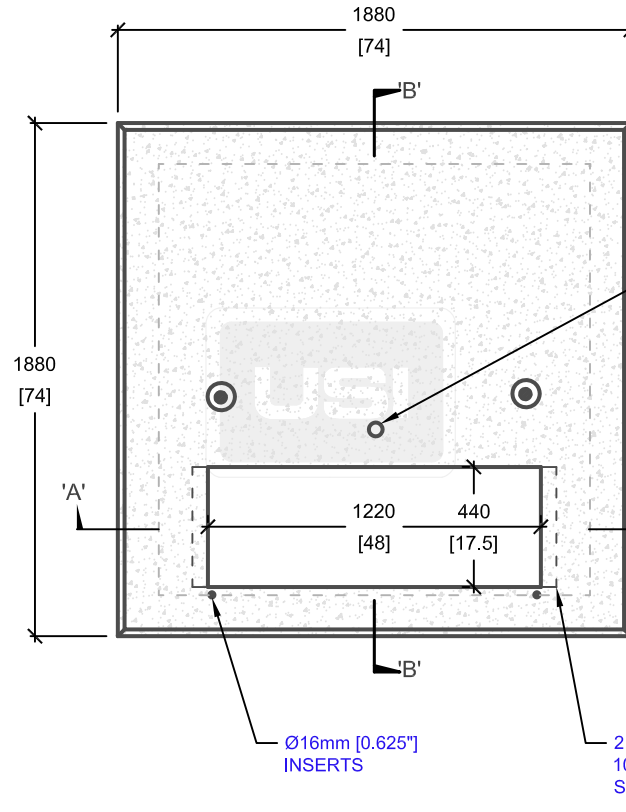
LOAD REQUIREMENTS	
DISTRIBUTED LATERAL LOAD	25 kN/m <sup>2</sup>
TOP SLAB DISTRIBUTED LOAD	60 kN/m <sup>2</sup>
TOP SLAB POINT LOAD	70 kN



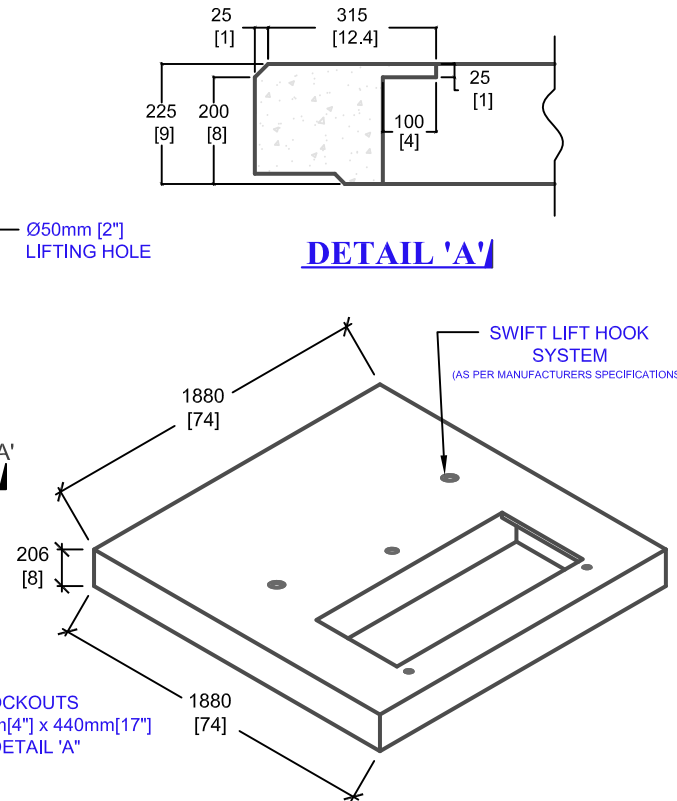
**CROSS SECTION 'B'**



**CROSS SECTION 'A'**



**PLAN VIEW**



**ISOMETRIC VIEW**

mm  
[Inches]  
ALL DIMENSIONS DEFAULT TO MILLIMETRES



**UTILITY STRUCTURES INC.**

61 BONGARD AVE | OTTAWA, ON | K2E 6V2  
T: 613.225.6398 F: 613.225.1681 TF: 800.267.6466

[www.utilitystructures.com](http://www.utilitystructures.com)

**CONSTRUCTION DETAILS:**

- AS PER **HYDRO OTTAWA UCS0001**
- TO BE USED WITH BASE DWG# **E-10**
- **CSA 23.4-05**
- 35 MPa (5000psi) AT 28 DAYS
- **STRIPPING STRENGTH: MIN. 20 MPa(2900psi)**
- 5-8% **AIR ENTRAINED**
- **EXPOSURE CLASS: C-1**
- **REINFORCING: STEEL TO CSA CAN A23.1**

**PRODUCT DETAILS:**

- (2) 16mm[0.625"] **INSERTS**
- (1) 50mm[2"] **LIFTING HOLE**
- **MULTI-PURPOSE PAD OPENING:**
- 440mm[17"] x 1200mm[48"]
- 440mm[17"] x 1400mm[56"]
- **CUSTOM OPTIONS AVAILABLE:**
- **CUSTOM OPENINGS**

**PRODUCT CODE:**

**E-11**

**THREE PHASE TRANSFORMER PAD**

**OUTSIDE DIMENSIONS:**

**0.225m(H) x 1880mm x 1880mm**

**TOTAL WEIGHT:**

**1,500 kg / 3,300 lbs**

**REVISION DATE:**

**SEPTEMBER 15, 2017**

**REV. # 8**