

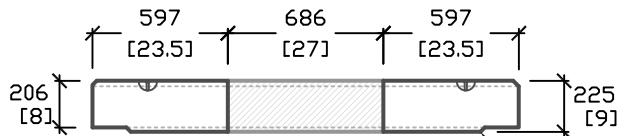
6' x 6' O.D. COMMUNICATION MANHOLE

OPTIONS AVAILABLE:

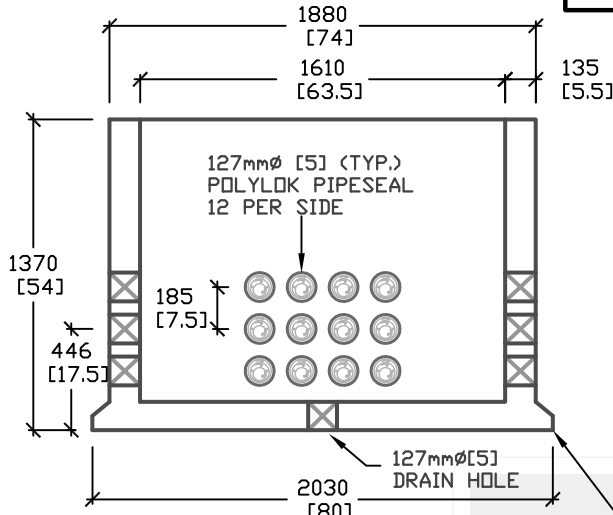
- PULLING EYES
- CABLE RACKS
- CUSTOM OPENINGS

WEIGHT:

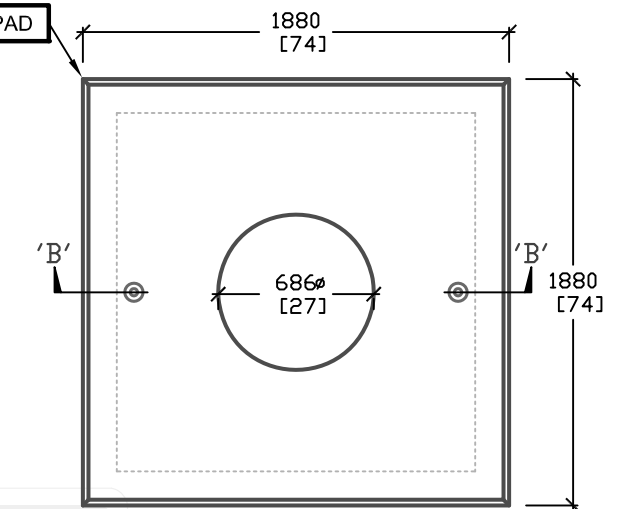
- E10B: 3950kg
- E12: 1700kg



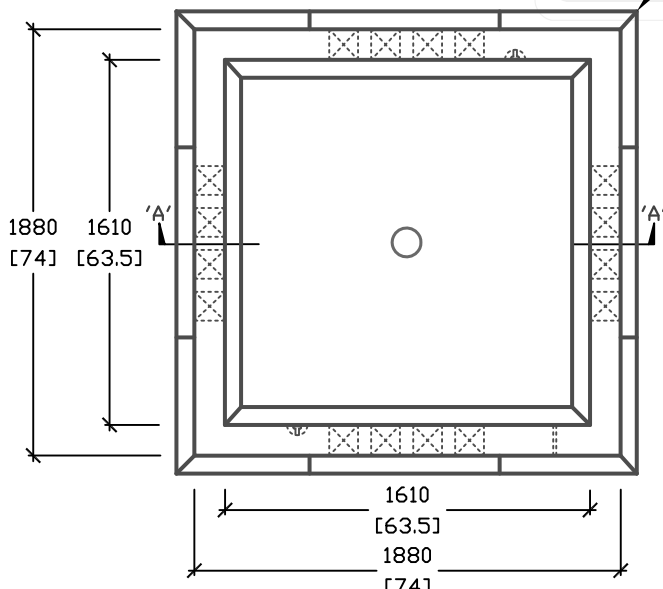
CROSS SECTION 'B'



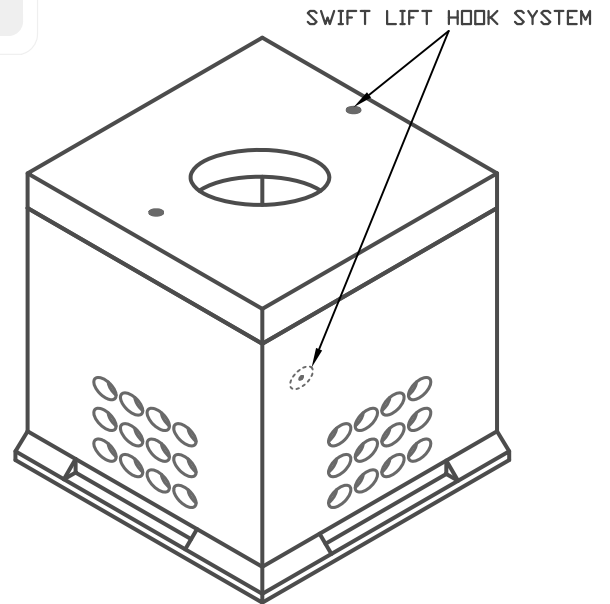
CROSS SECTION 'A'



PLAN VIEW
(E12 PAD)



PLAN VIEW
(E10B BASE)



ISOMETRIC VIEW

ALL DIMENSIONS DEFAULT TO MILLIMETERS

mm
[in.]



61 BONGARD AVE
OTTAWA, ON,
PH: 800.267.6466
FAX: 613.225.1681

E10B BASE & E12 PAD
DESIGNED TO CL-625-DNT TRUCK
LIVE LOADING AS PER CSA S6-06

*CSA 23.4-05
35MPa (5000psi) AT 28 DAYS
6-8% AIR ENTRAINED

E10B^C / E12^W

COMMUNICATION MANHOLE

TOTAL WEIGHT = 5650kg

www.utilitystructures.com

REV.#	MM/DD/YYYY	PREP.
3	OCT/25/2012	EG
4	OCT/04/2013	EG

1.57m(H) x 1610mm x 1610mm (I.D.)